

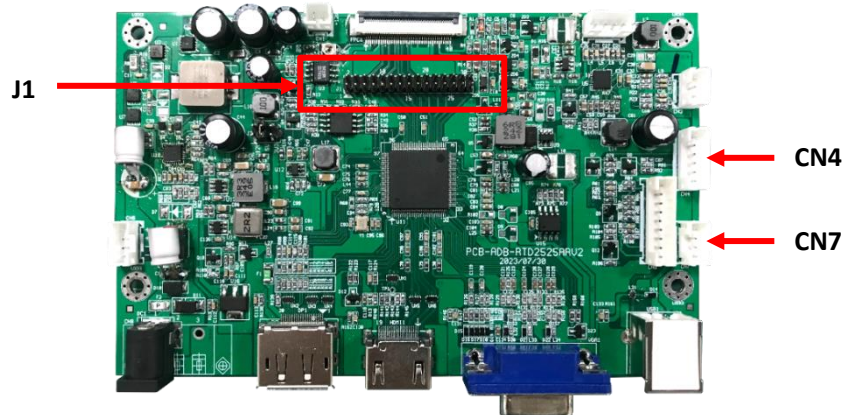
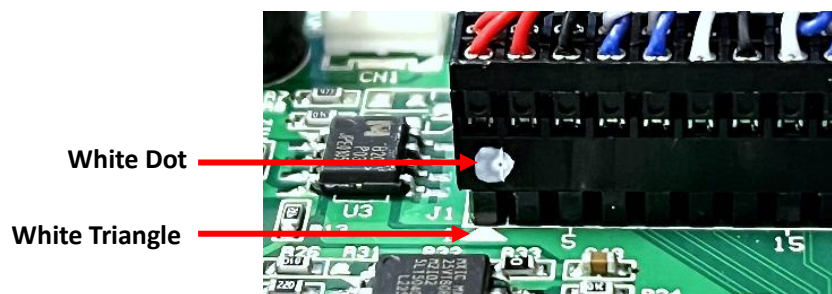
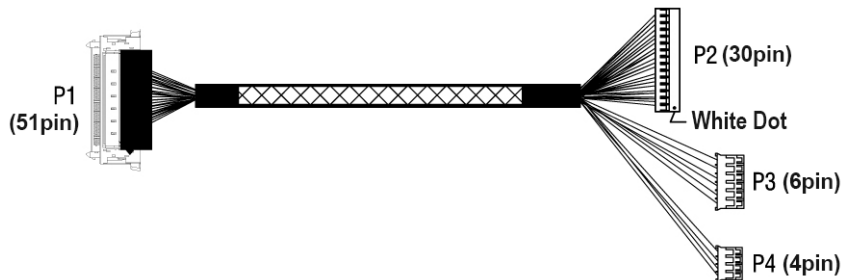
Sigma S Series TDS Quick Start Guide

1. Sigma S Series

The AMT Sigma S series is an integrated touch display solution (TDS) designed to simplify your development process and provide scalable solutions. This solution seamlessly combines LVDS, touch panel, and LED driver control signals into one connector. With uniform PIN definitions, the Sigma TDS ensures high compatibility, enabling effortless integration into various customer systems and significantly reducing setup time. It is designed to meet the needs of various environments, including outdoor, semi-outdoor, industrial, medical, public commercial, kiosk...etc.

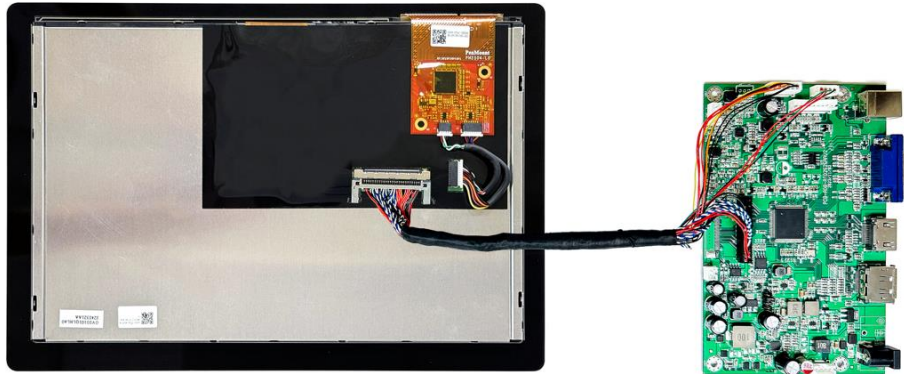
2. Getting Started with Sigma S Series

- (1.) Connect the P2 (30pin) to AD104 AD Board J1, align the white dot on P2 with the white triangle on J1
- (2.) Connect the P3 (6pin) to AD104 AD Board CN4
- (3.) Connect the P4 (4pin) to AD104 AD Board CN7



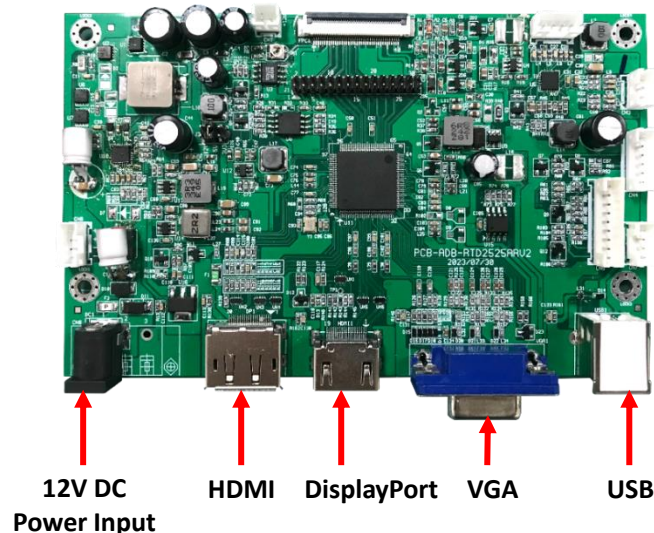
AD104 AD Board

(4.) Connect the P1 (51pin) to Sigma TDS



(5.) Connect the HDMI/DP/VGA cable from your Video source to AD104 AD Board

(6.) Apply Power to AD104 AD Board with a 12VDC +/- 5% power supply



(7.) Power on your PC

(8.) The Sigma display will power on and show the output from your PC

3. Required Equipment (Not Provided)

- HDMI (Type A) Cable to connect to the AD104 AD Board for the video signal
- DP (DisplayPort) Cable to connect to the AD104 AD Board for the video signal
- VGA Cable to connect to the AD104 AD Board for the video signal
- USB (Type B) Cable to connect to the AD104 AD Board for the touch screen input
- 12V DC power input
- Video source for video output (HDMI or DP or VGA) and Touch Screen for touch input

4. Contact Information

If you have any questions, please visit the AMT website and contact us: www.amtouch.com.tw

If there are any problems with the product, please email us: amt1@amtouch.com.tw

Please also reference to **AMT Sigma Series Integration Guide** for more detailed information.