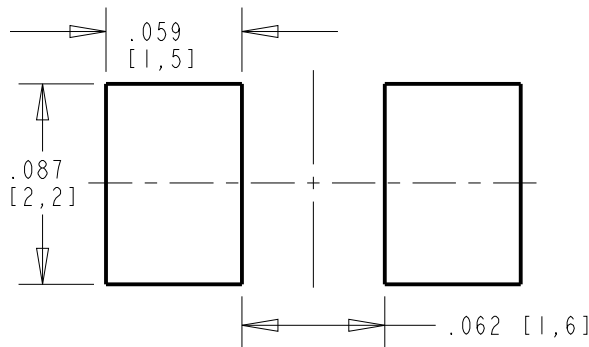
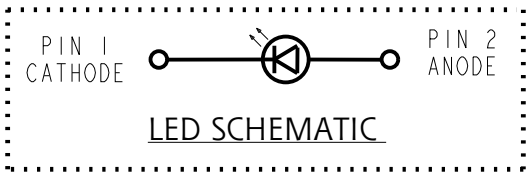
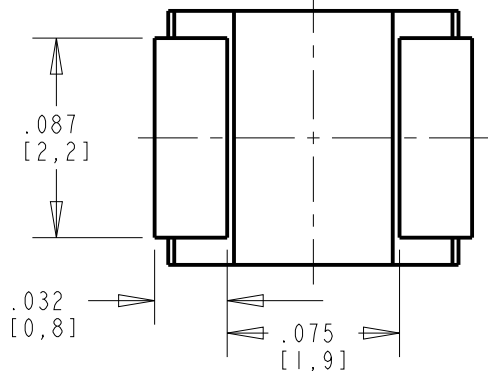
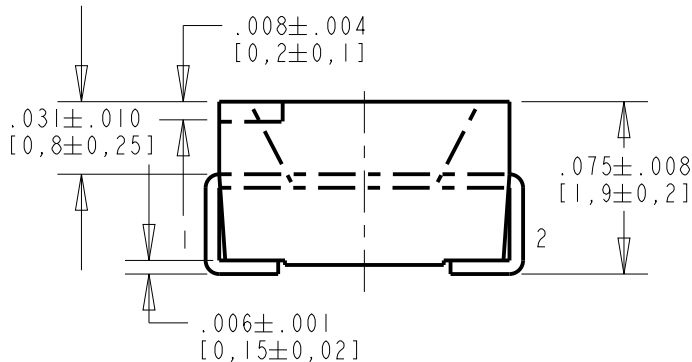
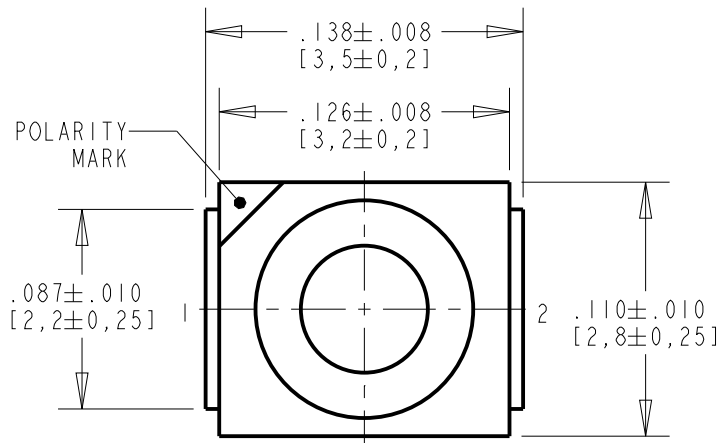
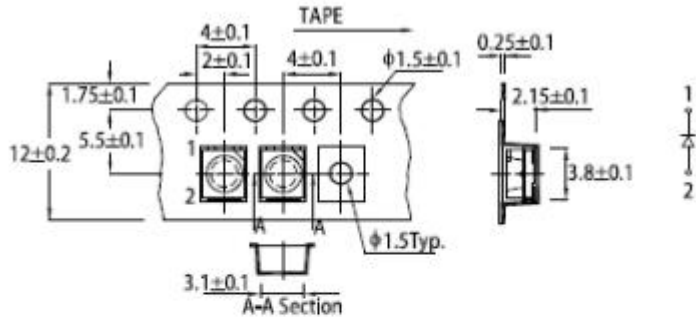


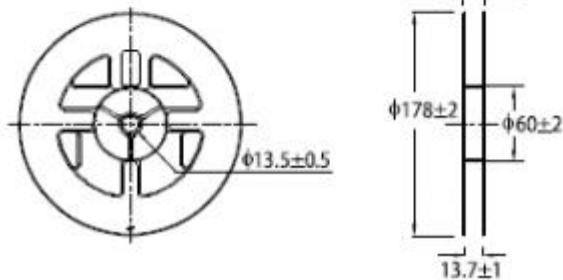
REV	REVISIONS	DRN	APP	DATE
A	NEW RELEASE	LD	NO	1-14-21
B	CATHODE MARK WAS INCORRECT AND CHANGED TO ANODE MARK	LD	NO	7-9-21
C	REVISED NOTE 2	LD	CS	6-3-22
D	LED SPECS TABLE UPDATED, DRAWING VIEWS UPDATED.	JSG	CS	25OCT23



TAPE SPECIFICATIONS(UNITS: mm)



REEL DIMENSIONS(UNITS: mm)



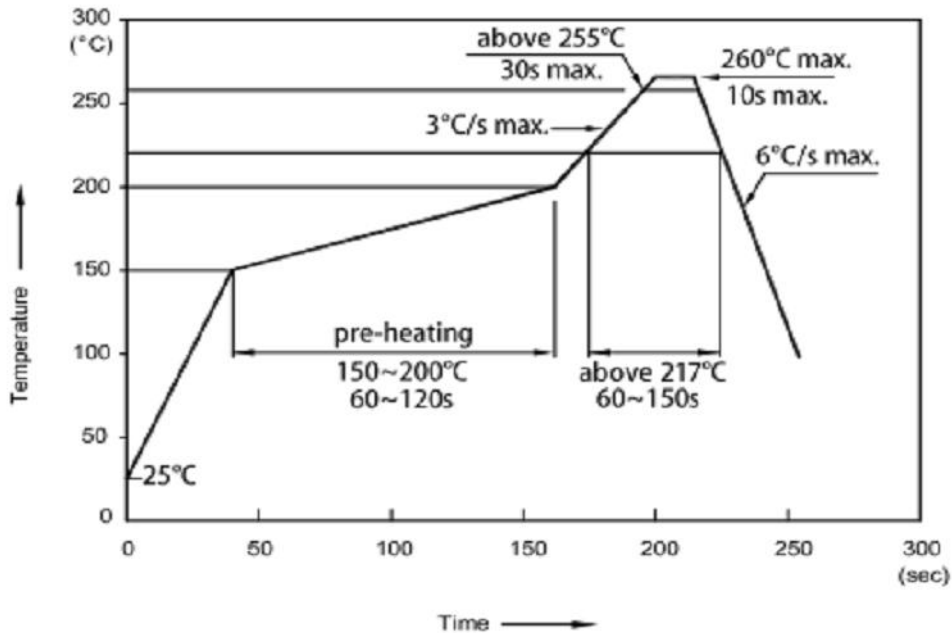
ABSOLUTE MAXIMUM RATINGS AT 25°C	MAX	UNITS
POWER DISSIPATION	75	mW
PEAK FORWARD CURRENT (DUTY CYCLE 1/10, 0.1ms PULSE WIDTH)	185	mA
DC FORWARD CURRENT	30	nm
ELECTROSTATIC DISCHARGE THRESHOLD(HBM)	3000	V
THERMAL RESISTANCE (JUNCTION/AMBIENT) R <sub>thJA</sub>	350	°C/W
THERMAL RESISTANCE (JUNCTION/SOLDER POINT) R <sub>thJS</sub>	220	°C/W
DERATING CURVE	0.416	mA/°C
OPERATING TEMPERATURE	-40 TO +85	°C
STORAGE TEMPERATURE	-40 TO +85	°C

OPTICAL CHARACTERISTICS AT 25°C					
LED CHARACTERISTICS	MIN.	TYP.	MAX.	UNITS	TEST CONDITIONS
LUMINOUS INTENSITY	150	350		mcd	I <sub>F</sub> = 20 mA
FORWARD VOLTAGE	1.95	2.5		V	I <sub>F</sub> = 20 mA
REVERSE CURRENT			10	uA	V <sub>R</sub> = 5V
PEAK WAVELENGTH	645			nm	
DOMINANT WAVELENGTH	630			nm	
VIEWING ANGLE (2 θ 1/2)		120		DEG.	

NOTES:

- PIN NUMBERS ARE FOR REFERENCE ONLY, DESIGNATION NON-EXISTENT ON PART.
- 597-3121-202NF: 20 PCS PER SAMPLE STRIP  
597-3121-207NF: 2000 PCS PER REEL.
- MOISTURE SENSITIVITY LEVEL IS 3
- THIS ASSEMBLY CONTAINS ELECTROSTATIC DISCHARGE SENSITIVE DEVICES (ESDS). MAINTAIN ALL PRECAUTIONARY MEASURES DURING ASSEMBLY, HANDLING AND STORAGE IN ACCORDANCE WITH IPC-A-610.
- THIS PRODUCT IS RoHS COMPLIANT. EACH BAG IS TO BE MARKED WITH RoHS COMPLIANT LABEL OR EQUIVALENT MARKINGS. LED MUST BE Pb FREE.

RECOMMENDED RoHS SOLDER PROFILE



MARK	DEFINITION	CONDITION
T <sub>S</sub> <sub>max</sub>	Maximum of pre-heating temperature	260 °C
T <sub>S</sub> <sub>min</sub>	Minimum of pre-heating temperature	150 °C
T <sub>s</sub>	Time form Tsmin to Tsmax	60-120 sec
T <sub>L</sub>	Temperature Liquidus	217 °C
t <sub>L</sub>	Time above liquidus temperature	within 90s
T <sub>p</sub>	Peak Temperature	245 °C
t <sub>p</sub>	Time for peak temperature	within 10s
DTr/Dt	Temperature rising rate	under 3° C/sec
DTd/Dt	Temperature decreasing rate	under -6° C/sec

THIS DRAWING AND THE CONTENTS HEREIN ARE CONFIDENTIAL AND THE SOLE PROPERTY OF DIALIGHT CORP. REPRODUCTION OF THIS DRAWING OR CONSTRUCTION OF ANY PARTS WITHIN THIS DRAWING ARE FORBIDDEN WITHOUT THE WRITTEN CONSENT OF DIALIGHT CORP.		
DIALIGHT CORP INTERNAL REFERENCE ONLY = 3D MODEL : 4500521932000-A.5		
SCALE: 7.000	DRAWING NUMBER	REV
ALL DIM's: INCH (mm)	C-18456	D
TOLERANCES: UNLESS OTHERWISE SPECIFIED	TITLE	
FRACTIONS: ±1/64	SM LED PLCC-2 RED	
DECIMALS (.XX): ±.01	MATERIAL	
DECIMALS (.XXX): ±.005		
DECIMALS (.XXX): ±.0005		
ANGLES: ±1°		
FINISH		
FSCM 83330		
SHEET 1 OF 1	FAMILY TABLE:	



ATTENTION:  
OBSERVE PRECAUTIONS FOR  
HANDLING ELECTROSTATIC  
SENSITIVE DEVICES