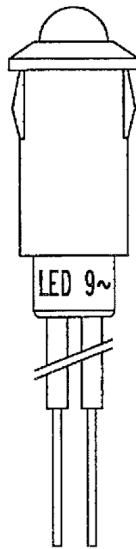
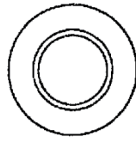
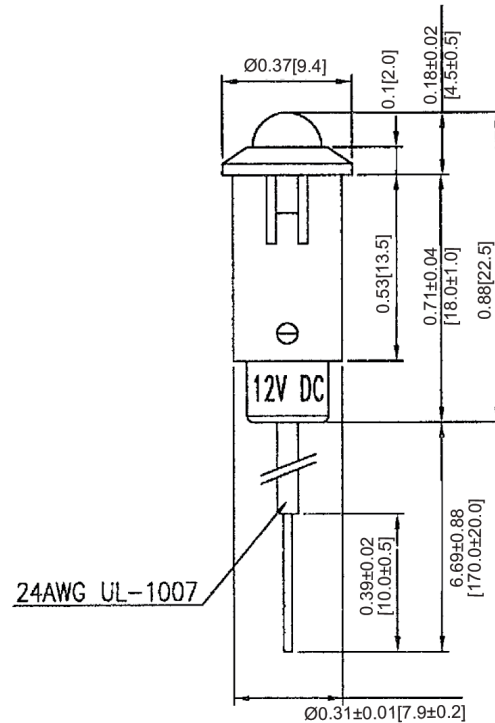


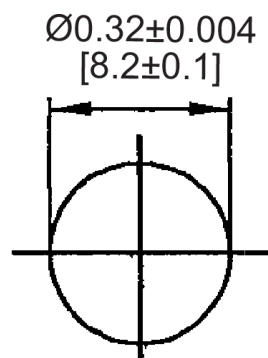
Mechanical Dimensions: Inches [mm]

Tolerances ± 0.012 [0.3] Unless Otherwise Specified

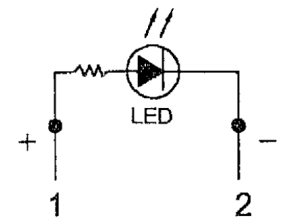
| | |
|---------------|--------------|
| LED Color | Red |
| Lens Color | Red Diffused |
| VF | 2V |
| IF | 20mA |
| Iv (mcd) | 350mcd |
| Viewing Angle | 25° |



Mounting Hole



Circuit Diagram



Electrical Specifications

| | |
|-----------------------|-------------------|
| Voltage Rating | 12VDC |
| Blinking Frequency | 1.5-2.5 Hz |
| Insulation Resistance | DC 500V 100M ohms |
| Dielectric Strength | AC 500V 1 min |
| Operating Temperature | -20°C ~ 80°C |

Material Specifications

| | |
|----------|--------------------------|
| LED Size | 5mm |
| Body | Nylon 66 (UL94V-2) |
| Base | Nylon 66 (UL94V-2) |
| Terminal | Wire 24AWG UL1007, 170mm |

LED Indicator - Blinking

LP1-5-W-R-BK



Rev **Date of issue** **Revision Notes**

Designed **Approved**

| | | | | |
|---|------------|-----------------|----|----|
| A | 11-30-2020 | Initial Drawing | RC | OF |
|---|------------|-----------------|----|----|