

产品规格书

PRODUCT SPECIFICATION

客户名称/Customer:

产品型号/Model: JYN30PA-11120V-27

规格书编号/ SPECIFICATION NO /20241209-02

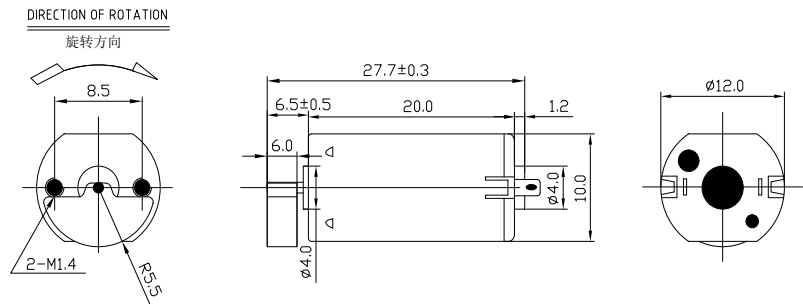
我司确认/ Our Confirmed:

批准 APPROVAL	审核 CHECK	制作 DESIGN

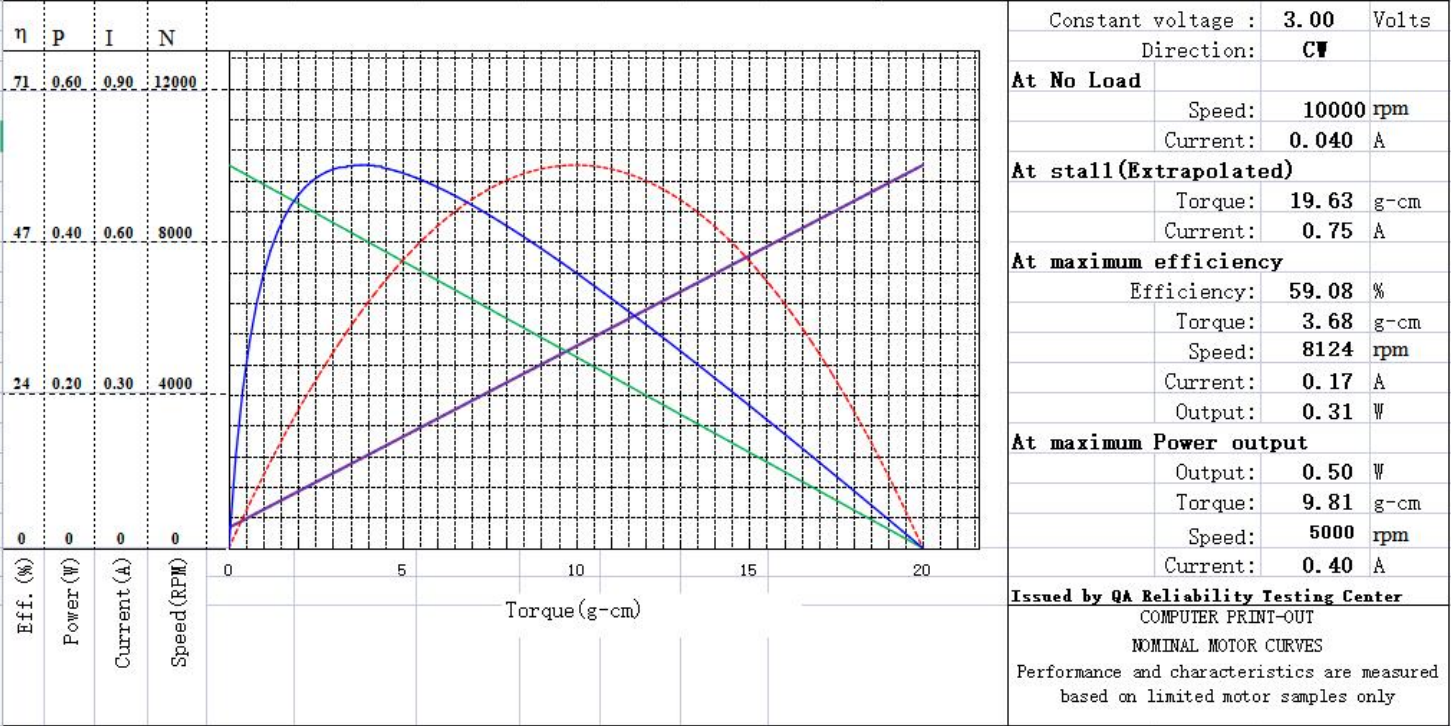
NO.	Items/项目	TEST CONDITIONS 测试条件	Specifcation/规格
1-1	Rated voltage 额定电压	(3.0) V DC	
1-2	Rated Loaded Current 额定负载电流	Rated Load 额定负载偏芯轮 R5.5*6.0 (钨钢)	$\leq 0.18A$
1-3	Rated Loaded Speed 额定负载转速	Rated Load 额定负载偏芯轮 R5.5*6.0 (钨钢)	4000rpm $\pm 10\%$
1-4	No load starting voltage 空载起动电压	NO load 无负载	$\leq (/) V$
1-5	Stall Torque 堵转转矩	At rated voltage 额定电压	$\geq 1.54mN.m$ $\geq 15.70gf.cm$
1-6	Stall Current 堵转电流	At rated voltage(must be stable) 额定电压 (马达两端电压必须保持稳定 3.0V)	$\geq 0.65A$
1-7	Insulation Resistance 绝缘电阻	Measured between motor terminal and motor metal housing with VDC megameter 使用 DC 500 V 兆欧表, 测量电机接线端子与机壳之间的电阻	$\geq (10.0) M\Omega$
1-8	Rotating Direction 旋转方向	(CW)	
1-9	Testing environment 测试环境	25° $\pm 3^{\circ}$	
1-10	axial clearance 轴向间隙	Measured by dial gauge 百分表	(0.05) ~ (0.50) mm

马达性能曲线图

MOTOR PERFORMANCE CURVE



Customer	NO LOAD		AT Max efficiency				STALL	
	SPEED	CURRENT	SPEED	CURRENT	TORQUE	EFF.	CURRENT	TORQUE
MODEL	rpm	mA	rpm	A	偏芯轮 (钨钢)	%	A	g.cm
JYN30PA-11120V-27	10000	40	4000	0.15	R5.5*6	34.58	0.75	19.63



CONFIDENTIAL DISCLOSURE: This drawing and all the intellectual property rights (including copyright) subsisting therein are the property of JIE YI ELECTRONICS LIMITED. No use, copies or reproductions should be made of this drawing or any part(s) thereof for whatever purpose nor shall any information, data, calculations, or other contents contained in this drawing be disseminated without the prior written permission of JIE YI ELECTRONICS LIMITED.

客户确认:

确 认/ Confirmed by:

核 准/ Approved by: