

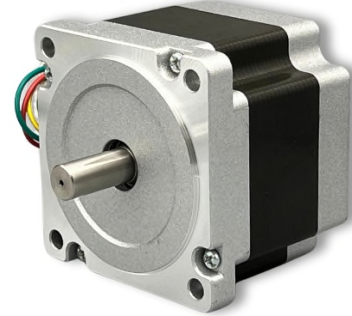


ISL Products International

# NEMA 34 Stepper Motor Hybrid - Bipolar w/ Dual Shaft *MOT-I-81618*

Our Hybrid Stepper Motors are a precise motion control solution providing excellent holding torque. They come in various sizes and step angles. With endless performance combinations, we have a fully tailored solution for you.

Contact Us for alternative solutions!

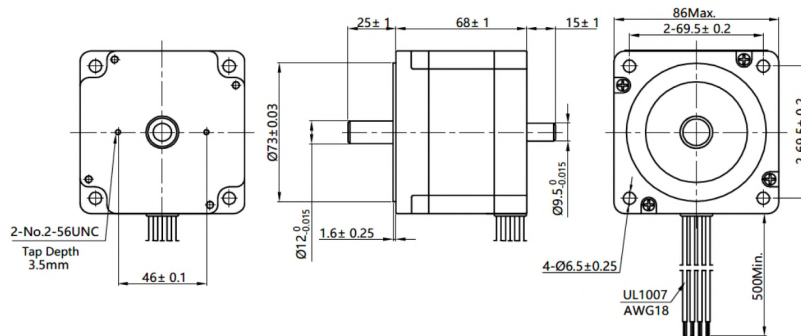


## Specifications

Motor Type:	Hybrid Stepper
Step Angle:	1.8°
Rated Voltage:	3.6 VDC
Number of Phases:	2
Rated Current/Phase:	3 A
Number of Leads:	4

Phase Inductance:	7.1 mH ( $\pm 20\%$ )
Holding Torque:	35.5 kg-cm
Phase Resistance:	1.2 $\Omega$ ( $\pm 10\%$ )
Induction Class:	B
Motor Weight:	1.7 kg
Termination:	Lead Wires

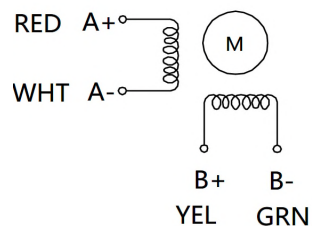
## Dimensions



units: mm

## Wiring Diagram

### Wiring Diagram



### Excitation Sequence / Direction of Rotation

STEP	A+	B+	A-	B-	
1	+	+	-	-	CCW ↑
2	-	+	+	-	
3	-	-	+	+	
4	+	-	-	+	

