

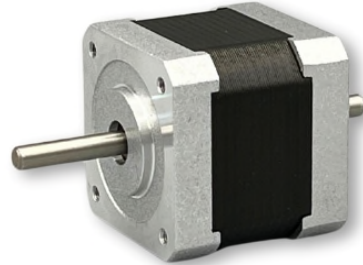


ISL Products International

NEMA 17 Stepper Motor Hybrid - Bipolar w/ Dual Shaft *MOT-I-81619*

Our Hybrid Stepper Motors are a precise motion control solution providing excellent holding torque. They come in various sizes and step angles. With endless performance combinations, we have a fully tailored solution for you.

Contact Us for alternative solutions!

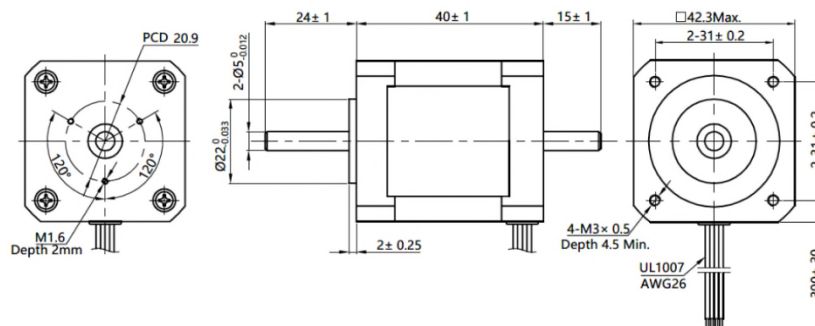


Specifications

Motor Type:	Hybrid Stepper
Step Angle:	1.8°
Rated Voltage:	7 VDC
Number of Phases:	2
Rated Current/Phase:	1.2 A
Number of Leads:	4

Phase Inductance:	11.6 mH ($\pm 20\%$)
Holding Torque:	5 kg-cm
Phase Resistance:	5.8 Ω ($\pm 10\%$)
Induction Class:	B
Motor Weight:	0.24 kg
Termination:	Lead Wires

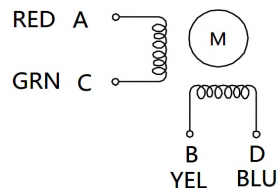
Dimensions



units: mm

Wiring Diagram

Wiring Diagram



Excitation Sequence / Direction of Rotation

STEP	A	B	C	D	
1	+	+	-	-	CCW
2	-	+	+	-	
5	-	-	+	+	CW
6	+	-	-	+	

