



ISL Products International

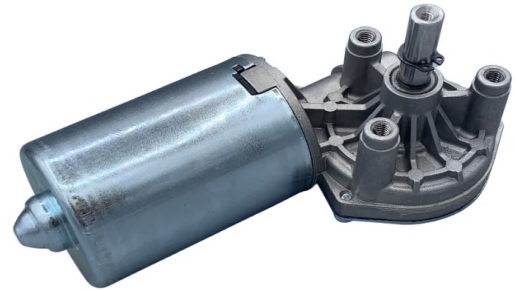
ø59mm Worm Gear Motor
Right Side Gearbox
MOT-I-81683-102

Online ID#:

WGM-59-24-210-16-R

Our Worm Gear Motors are an excellent automation solution providing right angle output with self-braking technology. They are equipped to handle varying loads and are best for intermittent duty operation. With endless performance combinations, we have the gear motor for your next application.

Contact Us for alternative solutions!

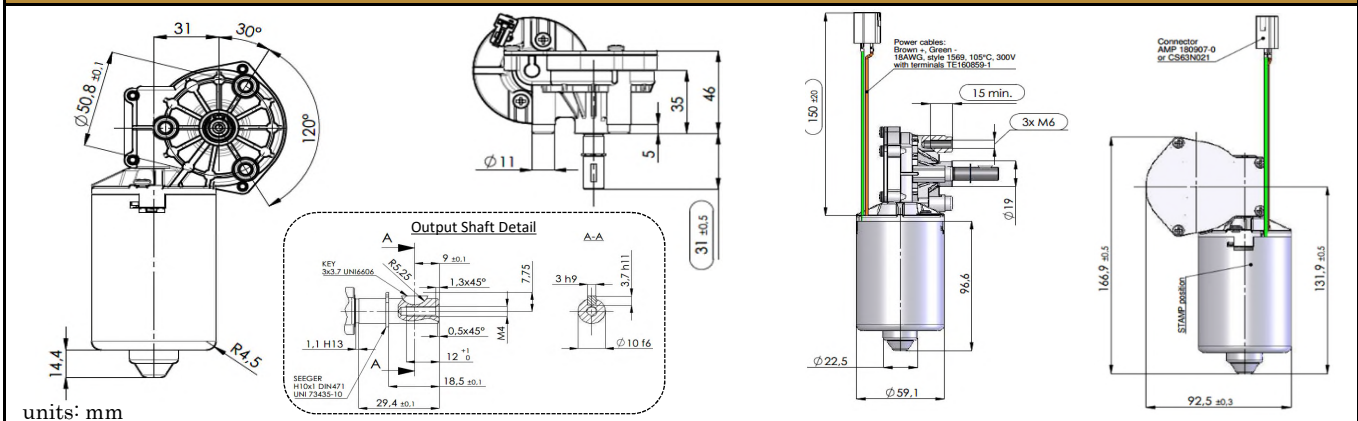


Specifications

Gearhead Type:	Worm - Right side	No-Load Speed:	210 rpm (+/- 10%)
Motor Type:	Carbon - Brushed	No-Load Current:	< 0.80 A
Rated Voltage:	24V DC	Stall Torque:	* 153 kg.cm
Rated Speed:	176 rpm	Max. Power:	82 W
Rated Torque:	24.5 kg.cm	Termination Style:	Connector: AMP 180907-0

* Gearbox limitations are set at 100 kg.cm, operating past this torque limit may create premature failure.

Dimensions



Performance Curve

