



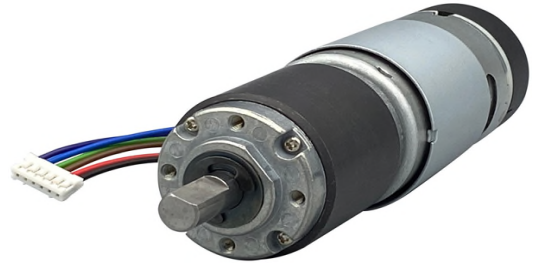
ISL Products International

ø 36mm Planetary Gear Motor
Carbon - Brushed
MOT-I-81714-E

Online ID#: PGM-36P-12-721-9-01CCSE

Our Planetary Gear Motors are an inline solution providing excellent torque output at various speeds. They are best for intermittent duty operation. With endless performance combinations, we have a fully tailored gear motor solution for you.

Contact Us for alternative solutions!

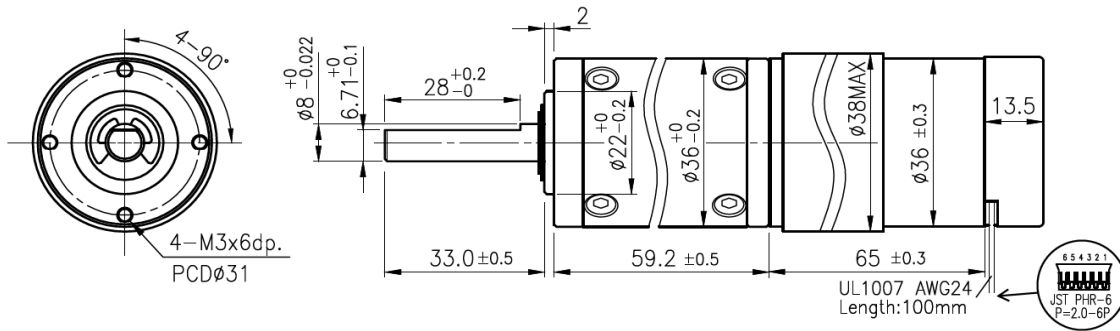


Specifications

Gearhead Type:	Planetary	No-Load Speed:	9 rpm (+/- 10%)
Motor Type:	Carbon - Brushed	No-Load Current:	< 0.90 A
Rated Voltage:	12V DC	Stall Current:	16 A
Rated Speed:	7 rpm	Max. Power:	24 W
Rated Torque:	* 184 kg.cm	Reduction Ratio:	721:1
Termination Style:	Connector: JST PHR-6	Encoder Type:	Magnetic (2-Ch.-7PPR/14 Pole)

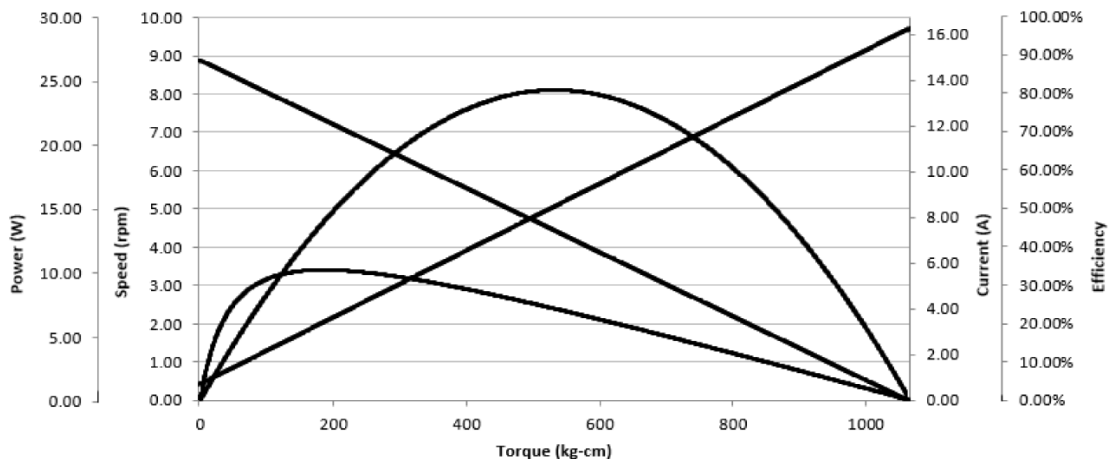
* Gearbox limitations are set at 90 kg.cm, operating past this torque limit may cause premature failure.

Dimensions



units: mm

Performance Curve

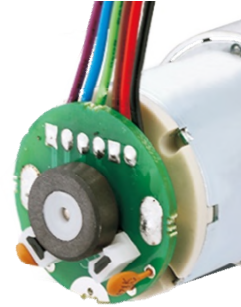




ISL Products International

ø36mm Magnetic Encoder 2 Channel - 7PPR

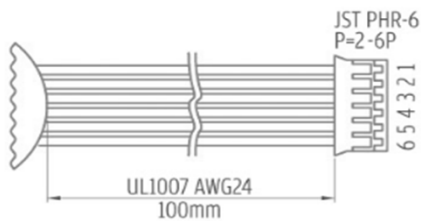
This gear motor is equipped with one of our magnetic encoders to provide exceptional feedback and control.



Specifications

Type:	Magnetic	Min. Operating Temp:	-10°C / 14°F
Channel(s):	2	Max. Operating Temp:	60°C / 140°F
Pulses per Revolution:	7 PPR / 14 Pole	Max. Humidity:	85% (RH)
Supply Voltage:	3.5V - 20Vcc	Number of Wires:	6
Supply Current:	10mA (max.)	Connector Type:	JST PHR-6

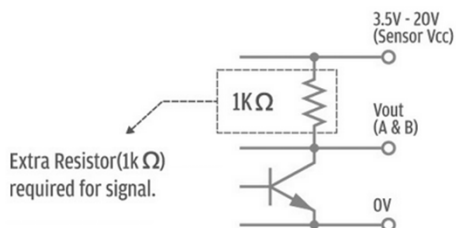
Dimensions / Connections



Encoder Connections		
1	Black	(-) Motor
2	Red	(+) Motor
3	Brown	Hall Sensor Vcc
4	Green	Hall Sensor GND
5	Blue	Hall Sensor A – V Out
6	Purple	Hall Sensor B – V Out

Electrical Characteristics

Output Circuit



Output Wave

