



ISL Products International

ø 42mm Planetary Gear Motor

Carbon - Brushed

MOT-I-81736

Online ID#:

PGM-42C-24-104-43-04

Our Planetary Gear Motors are an inline solution providing excellent torque output at various speeds. They are equipped to handle varying loads and are best for intermittent duty operation. With endless performance combinations, we have a fully tailored gear motor solution for you.



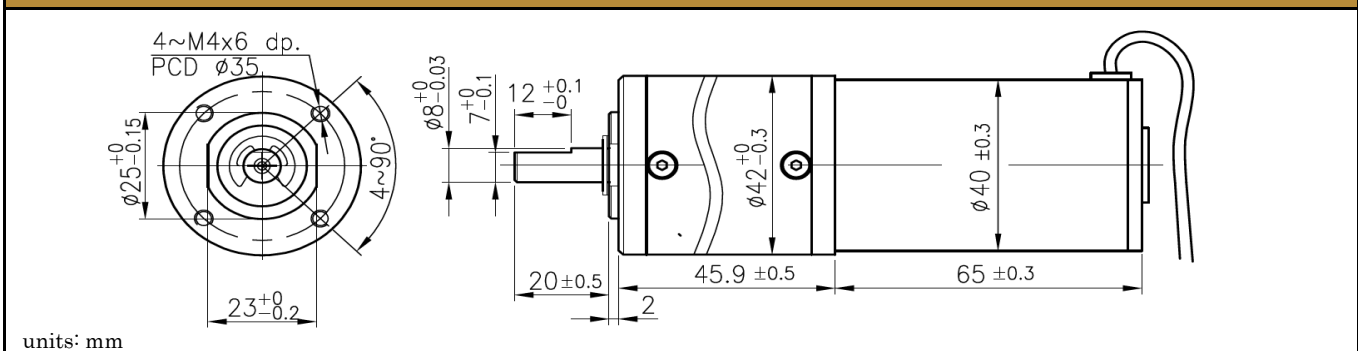
Contact Us for alternative solutions!

Specifications

Gearhead Type:	Planetary	No-Load Speed:	43 rpm (+/- 10%)
Motor Type:	Carbon - Brushed	No-Load Current:	< 350 mA
Rated Voltage:	24V DC	Stall Current:	< 4.5 A
Rated Speed:	35 rpm	Max. Power:	16 W
Rated Torque:	28 kg.cm	Reduction Ratio:	104:1
Rated Current:	< 1.2 A	Termination Style:	Lead Wires

* Gearbox limitations are set at 70 kg.cm, operating past this torque limit may cause premature failure.

Dimensions



Performance Curve

