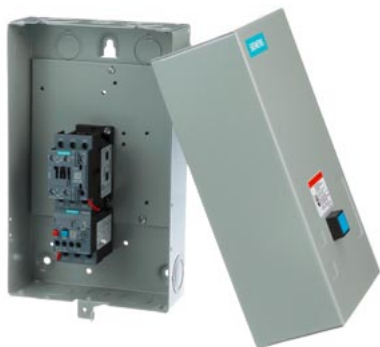


STARTER, 3RE41227BA311KY0, WITH MODS



|   |  |
|---|--|
| product brand name  | Siemens  |
| product designation   | Non-reversing motor starter                                  |
| special product feature   | Hand-Off-Auto Selector Switch, CPT Std Capacity 480/240:120V |
| <b>General technical data</b>   |  |
| weight [lb]   | 13 lb  |
| Height x Width x Depth [in]   | 14 × 8 × 7 in  |
| touch protection against electrical shock                               | NA for enclosed products                                     |
| installation altitude [ft] at height above sea level maximum            | 6 560 ft   |
| ambient temperature [°F] during storage                                 | -22 ... +149 °F  |
| ambient temperature [°F] during operation                               | -4 ... +104 °F   |
| ambient temperature during storage                                      | -30 ... +65 °C   |
| ambient temperature during operation                                    | -20 ... +40 °C   |
| country of origin   | Germany  |
| <b>Power and control electronics</b>                                    |  |
| number of poles for main current circuit                                | 3  |
| type of voltage of the control supply voltage                           | AC   |
| control supply voltage  |  |
| • at AC at 50 Hz rated value  | 110 V  |
| • at AC at 60 Hz rated value  | 120 V  |
| disconnecter functionality  | No   |
| yielded mechanical performance [hp] for 3-phase AC motor                |  |
| • at 200/208 V rated value  | 10 hp  |
| • at 220/230 V rated value  | 10 hp  |
| • at 460/480 V rated value  | 20 hp  |
| • at 575/600 V rated value  | 25 hp  |
| <b>Contactor</b>  |  |
| number of NO contacts for main contacts                                 | 3  |
| operating voltage for main current circuit at AC at 60 Hz maximum       | 600 V  |
| operating voltage at AC-3 rated value maximum                           | 600 V  |
| mechanical service life (operating cycles) of the main contacts typical | 30 000 000   |
| <b>Auxiliary contact</b>  |  |
| number of NC contacts for auxiliary contacts                            | 1  |
| number of NO contacts for auxiliary contacts                            | 1  |
| number of total auxiliary contacts maximum                              | 8  |
| contact rating of auxiliary contacts of contactor according to UL       | 10A@600V(A600), 2.5A@600V(Q600)                              |
| <b>Coil</b>   |  |
| apparent pick-up power of magnet coil at AC                             | 79 VA  |
| apparent holding power of magnet coil at AC                             | 8.5 VA   |
| operating range factor control supply voltage rated value of            | 0.8 ... 1.1  |

|   |  |
|---|--|
| magnet coil   |  |
| ON-delay time   | 8 ... 40 ms  |
| OFF-delay time  | 4 ... 16 ms  |
| <b>Overload relay</b>   |  |
| product function  |  |
| • overload protection   | Yes  |
| • test function   | Yes  |
| • external reset  | Yes  |
| reset function  | Manual, automatic and remote (with optional accessory) |
| adjustment range of thermal overload trip unit  | 9 ... 12.5   |
| number of NC contacts of auxiliary contacts of overload relay   | 1  |
| number of NO contacts of auxiliary contacts of overload relay   | 1  |
| contact rating of auxiliary contacts of overload relay according to UL  | 5A@600VAC (B600), 1A@250VDC (R300)                     |
| <b>Enclosure</b>  |  |
| degree of protection NEMA rating of the enclosure   | NEMA 1 large size enclosure                            |
| design of the housing   | indoors, usable on a general basis                     |
| <b>Mounting/wiring</b>  |  |
| mounting position   | vertical   |
| fastening method  | Surface mounting and installation                      |
| type of electrical connection for supply voltage line-side  | Screw-type terminals                                   |
| tightening torque [lbf-in] for supply   | 18 ... 21 lbf-in                                       |
| type of connectable conductor cross-sections at line-side for AWG cables single or multi-stranded                             | 2x (16 ... 12), 2x (14 ... 8)                          |
| temperature of the conductor for supply maximum permissible   | 60 °C  |
| material of the conductor for supply  | CU   |
| type of electrical connection for load-side outgoing feeder   | Screw-type terminals                                   |
| tightening torque [lbf-in] for load-side outgoing feeder  | 18 ... 21 lbf-in                                       |
| type of connectable conductor cross-sections for AWG cables for load-side outgoing feeder single or multi-stranded            | 2x (16 ... 12), 2x (14 ... 8)                          |
| temperature of the conductor for load-side outgoing feeder maximum permissible  | 60 °C  |
| material of the conductor for load-side outgoing feeder   | CU   |
| type of electrical connection of magnet coil  | Screw-type terminals                                   |
| tightening torque [lbf-in] at magnet coil   | 7 ... 10 lbf-in  |
| type of connectable conductor cross-sections of magnet coil for AWG cables single or multi-stranded                           | 2x (16 ... 12), 2x (14 ... 8)                          |
| temperature of the conductor at magnet coil maximum permissible   | 75 °C  |
| material of the conductor at magnet coil  | CU   |
| type of electrical connection for auxiliary contacts  | Screw-type terminals                                   |
| tightening torque [lbf-in] at contactor for auxiliary contacts  | 7 ... 10 lbf-in  |
| type of connectable conductor cross-sections at contactor for AWG cables for auxiliary contacts single or multi-stranded      | 2x (20 ... 16), 2x (18 ... 14)                         |
| temperature of the conductor at contactor for auxiliary contacts maximum permissible  | 75 °C  |
| material of the conductor at contactor for auxiliary contacts   | CU   |
| type of electrical connection at overload relay for auxiliary contacts  | Screw-type terminals                                   |
| tightening torque [lbf-in] at overload relay for auxiliary contacts   | 7 ... 10 lbf-in  |
| type of connectable conductor cross-sections at overload relay for AWG cables for auxiliary contacts single or multi-stranded | 2x (20 ... 16), 2x (18 ... 14)                         |
| temperature of the conductor at overload relay for auxiliary contacts maximum permissible                                     | 70 °C  |
| material of the conductor at overload relay for auxiliary contacts  | CU   |
| <b>Short-circuit current rating</b>   |  |
| design of the fuse link for short-circuit protection of the main circuit required   | Class J  |
| design of the short-circuit trip  | Thermal magnetic circuit breaker                       |
| maximum short-circuit current breaking capacity (I <sub>cu</sub> )  |  |
| • at 240 V  | 5 kA   |
| • at 480 V  | 5 kA   |
| • at 600 V  | 5 kA   |
| certificate of suitability  | UL 60947-4-1   |

## Further information

Industrial Controls - Product Overview (Catalogs, Brochures,...)

[www.usa.siemens.com/iccatalog](http://www.usa.siemens.com/iccatalog)

Industry Mall (Online ordering system)

<https://mall.industry.siemens.com/mall/en/us/Catalog/product?mlfb=3RE4122-7BA31-1KH3>

Search Datasheet in Service&Support (Manuals)

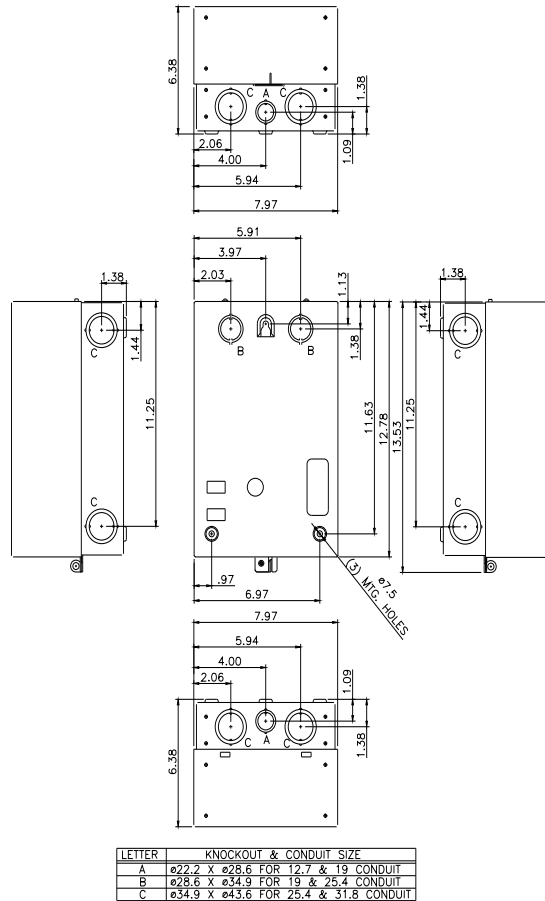
<https://support.industry.siemens.com/cs/US/en/ps/3RE4122-7BA31-1KH3/man>

Image database (product images, 2D dimension drawings, 3D models, device circuit diagrams, EPLAN macros, ...)

[http://www.automation.siemens.com/bilddb/cax\\_de.aspx?mlfb=3RE4122-7BA31-1KH3&lang=en](http://www.automation.siemens.com/bilddb/cax_de.aspx?mlfb=3RE4122-7BA31-1KH3&lang=en)

Certificates/approvals

<https://support.industry.siemens.com/cs/US/en/ps/3RE4122-7BA31-1KH3/certificate>



last modified:

1/25/2022