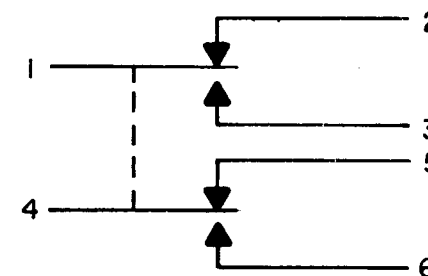


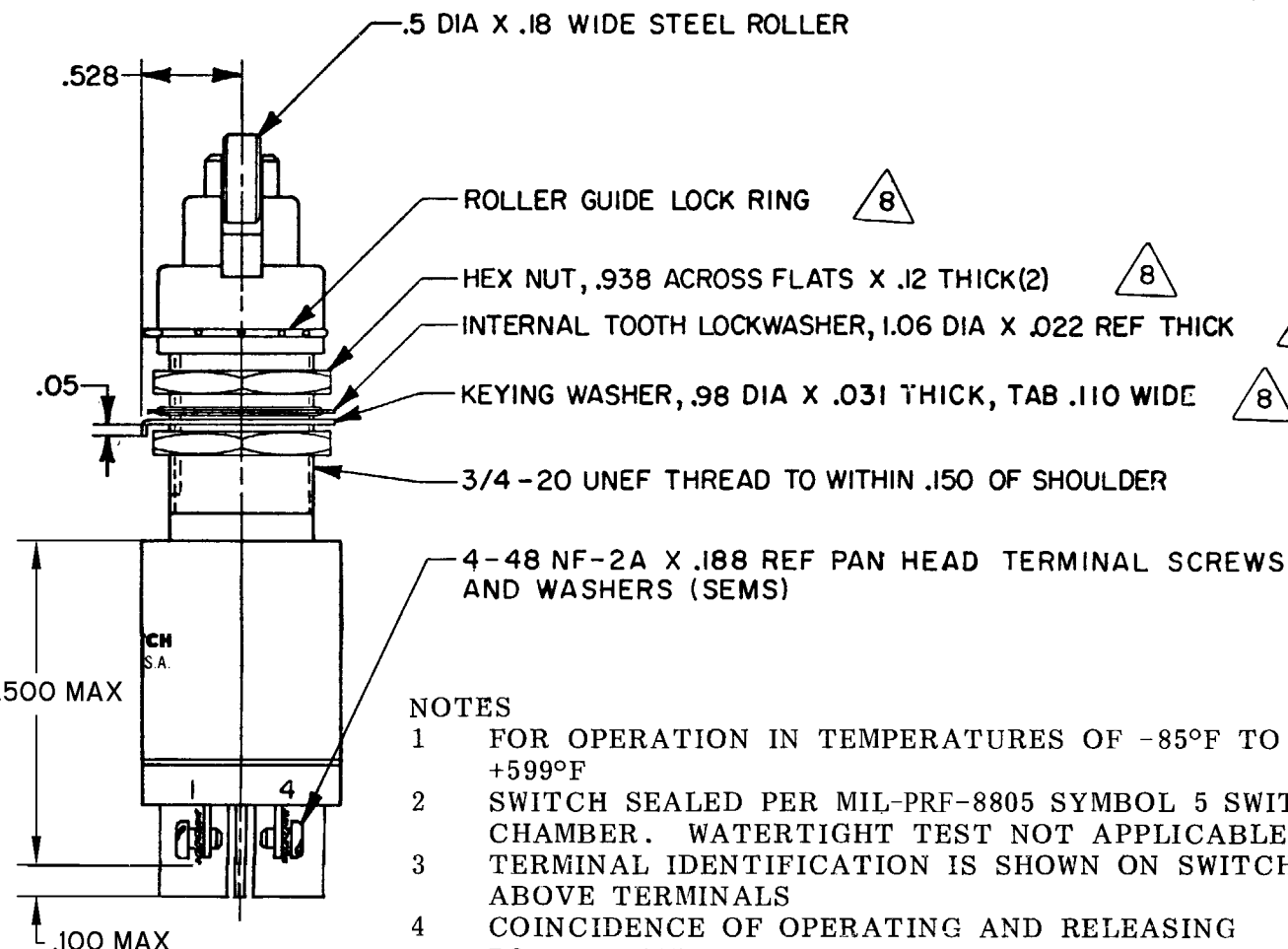
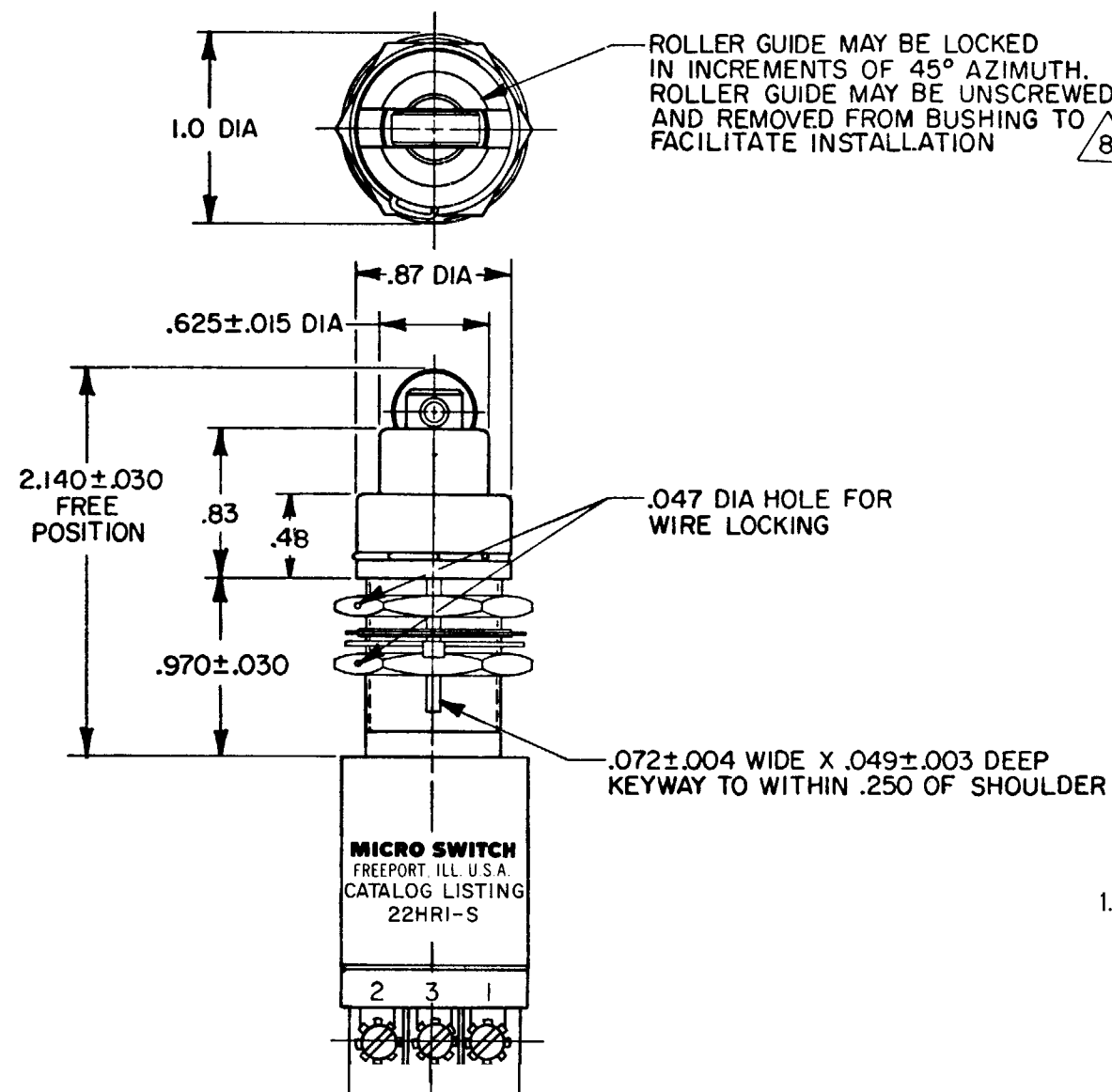
MICRO SWITCH
FREEPORT ILLINOIS U.S.A.
A DIVISION OF HONEYWELL
FED. MFG. CODE 91929

SWITCH-ENCLOSED

CATALOG LISTING
22HR1-S

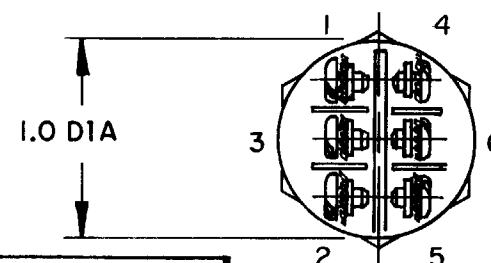


CIRCUIT DIAGRAM



NOTES

- 1 FOR OPERATION IN TEMPERATURES OF -85°F TO +599°F
- 2 SWITCH SEALED PER MIL-PRF-8805 SYMBOL 5 SWITCH CHAMBER. WATERTIGHT TEST NOT APPLICABLE
- 3 TERMINAL IDENTIFICATION IS SHOWN ON SWITCH ABOVE TERMINALS
- 4 COINCIDENCE OF OPERATING AND RELEASING POINTS .005 INCH OF PLUNGER TRAVEL
- 5 ALL EXPOSED PARTS ARE CORROSION RESISTANT
- 6 TO ADJUST ROLLER DIRECTION, REMOVE ROLLER GUIDE LOCK RING, SCREW ROLLER GUIDE DOWN AS FAR AS POSSIBLE, THEN UNSCREW TO DESIRED DIRECTION, SECURE BY REPLACING ROLLER GUIDE LOCK RING
- 7 CIRCUIT DIAGRAM PERMANENTLY MARKED ON SWITCH
- 8 HARDWARE MAY BE PACKAGED UNASSEMBLED PER MIL-PRF-8805



THIS DRAWING COVERS A PROPRIETARY ITEM AND IS THE PROPERTY OF MICRO SWITCH, A DIVISION OF HONEYWELL. THIS DRAWING IS NOT TO BE COPIED OR USED WITHOUT THE APPROVAL OF MICRO SWITCH.

THIRD ANGLE PROJECTION

SCALE —

DO NOT SCALE PRINT

TOLERANCES
APPLY TO DESIGN UNITS. CONVERSIONS ARE ONLY FOR REFERENCE. UNLESS NOTED, TOLERANCES ARE ±

DIM.	TOL.	DIM.	TOL.
in	mm/in	in	mm/in
NO PLACES	1/64	X X	0.005
ONE PLACE	0.005	X X X	0.005
TWO PLACES	0.0005	X X X X	0.0005
THREE PLACES	0.00005	X X X X X	0.00005

DESIGN UNITS ☐ SI METRIC ☒ US CUSTOMARY

RAW MATERIAL—COMMERCIAL STANDARD
MICRO SWITCH STANDARDS APPLY

DIMENSIONS ARE TO BE MET BEFORE
PROTECTIVE COATINGS ARE APPLIED

WEIGHT 5 OZ. MAX.

CHARACTERISTICS

OPERATING FORCE ——— 6-12 LBS
FULL OVERTRAVEL FORCE ——— 35 LBS MAX
RELEASE FORCE ——— 5 LBS MIN
PRETRAVEL ——— .050 MAX
DIFFERENTIAL TRAVEL ——— .015 MAX
OVERTRAVEL ——— .250 MIN

ELECTRICAL DATA

CONTACT ARRANGEMENT
SPDT(2)

28 VOLTS DC (EACH CIRCUIT)
RESISTIVE ——— 5 AMPS
INDUCTIVE ——— 2 AMPS

RASTER
FO-52851-A
DRAWN
TSM 20 JULY 80
CHECK
JAF
14 DEC 98
CHECK
JAF
09 APR 08
CHECK
ASD
09 APR 08
CHECK
PK
09 APR 08
CHECK
D 0038194
MPO
14 DEC 98
C 0093991
J A P
9 JAN 81
B 0047277
T S M
20 JULY 80
A 47573
REVISIONS
ISSUE
1314
DRAWING
NUMBER
M
22HR1-S
PAGE 1 OF 1
REPLACES
RELEASE NO. SR-7306