

# MICRO SWITCH

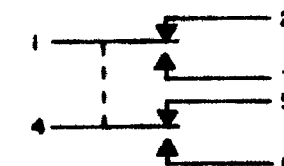
FREEPORT ILLINOIS U.S.A.  
A DIVISION OF HONEYWELL

FED MFG CODE 91929

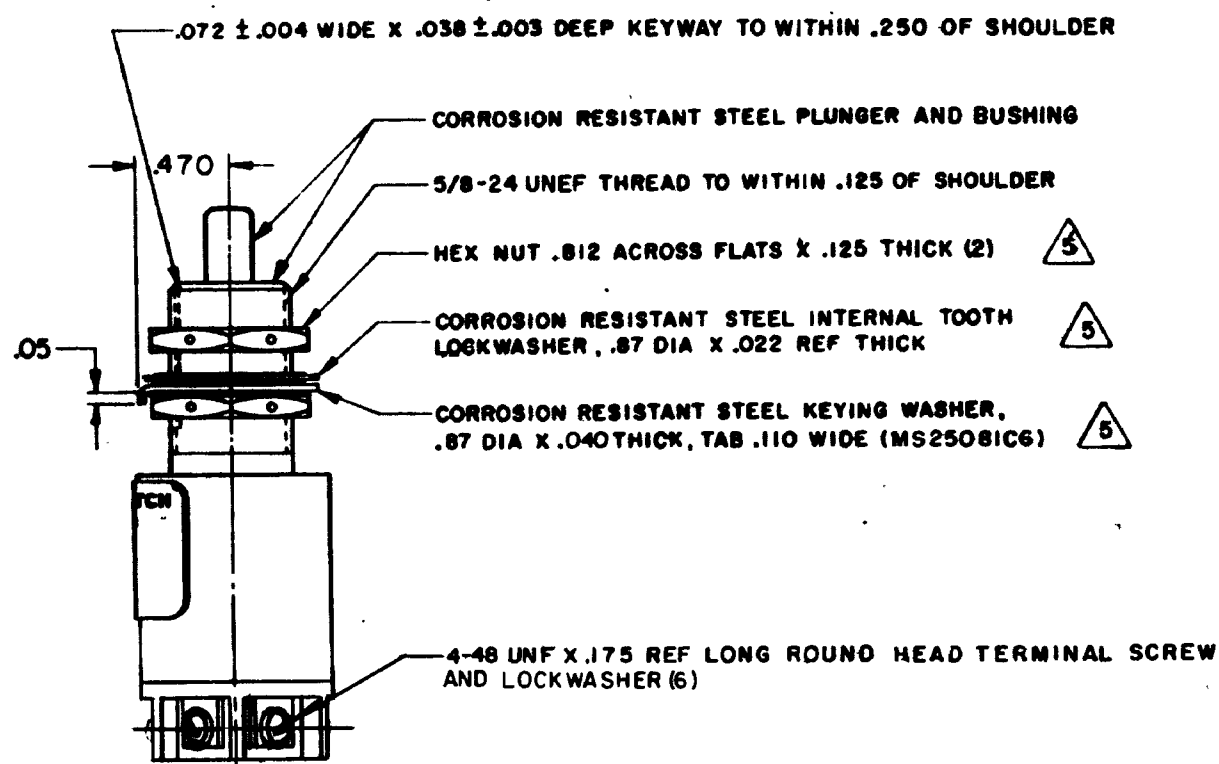
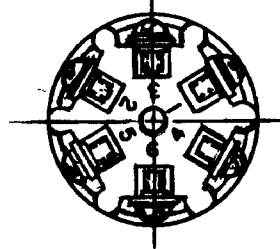
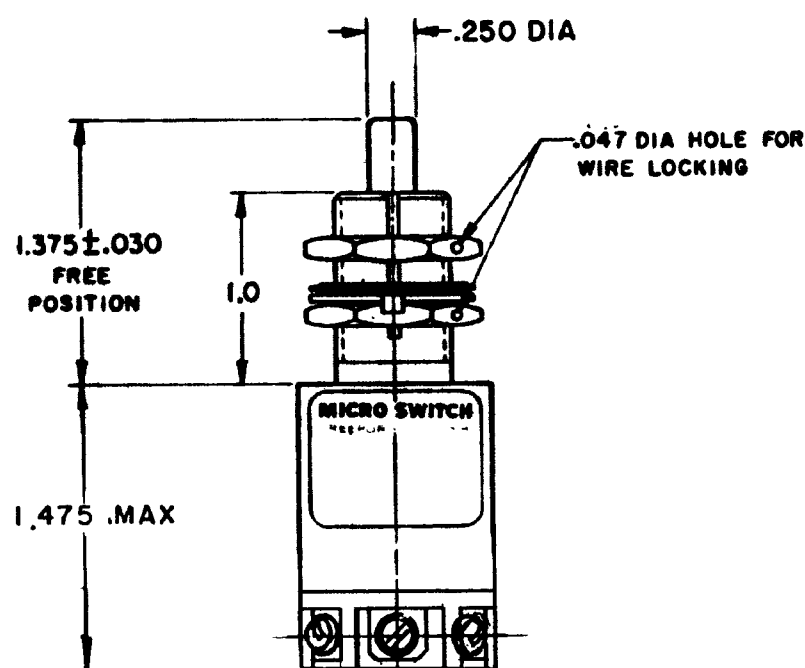
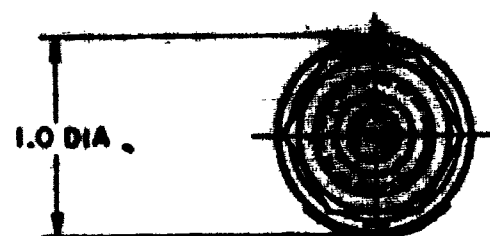
## SWITCH-ENCLOSED

CATALOG LISTING

1HE1-S



CIRCUIT DIAGRAM



### NOTES

- 1 - CORROSIVE RESISTANT STEEL ENCLOSURE
- 2 - SWITCH SEALED PER MIL-S-8805 SYMBOL 5
- 3 - COINCIDENCE OF OPERATING AND RELEASING POINTS:  
.010 INCH OF PLUNGER TRAVEL
- 4 - FOR OPERATION IN TEMPERATURES OF MINUS 65°F TO PLUS 257°F
- 5 - HARDWARE MAYBE PACKAGED UNASSEMBLED PER MIL-S-8805

THIS DRAWING COVERS A PROPRIETARY ITEM AND IS THE PROPERTY OF MICRO SWITCH A DIVISION OF HONEYWELL THIS DRAWING IS NOT TO BE COPIED OR USED WITHOUT THE APPROVAL OF MICRO SWITCH

CHARACTERISTICS	ELECTRICAL DATA
OPERATING FORCE - - - - - 6-12 LB	CONTACT ARRANGEMENT
FULL OVERTRAVEL FORCE - - - - - 30 LB MAX	S P D T (2)
RELEASE FORCE - - - - - 4 LB MIN	LOAD
PRETRAVEL - - - - - .040 MAX	28 VDC
DIFFERENTIAL TRAVEL - - - - - .020 MAX	SEA LEVEL
OVERTRAVEL - - - - - .250 MIN	100,000 FT.
	RES
	IND
	MOTOR

SCALE	FULL
DO NOT SCALE PRINT	
TOLERANCES	
DESIGN UNITS	
WEIGHT	3.5 OZ MAX

1HE1-S

M

DRAWING NUMBER

12

14

CHECK

### REVISIONS

A	C068504	TSM	3 OCT 90
B	C074101	DAW	10 FEB 93
C	C077504 C	DLT	28 JUL 94
D	C082106	GJW	20 FEB 96

CHECK

4 OCT 90

4 OCT 90

4 OCT 90

4 OCT 90

4 OCT 90

4 OCT 90

4 OCT 90

4 OCT 90

4 OCT 90

4 OCT 90

4 OCT 90

4 OCT 90

4 OCT 90

4 OCT 90

4 OCT 90

FO-52851-8

DRAWN

3 OCT 90

3 OCT 90