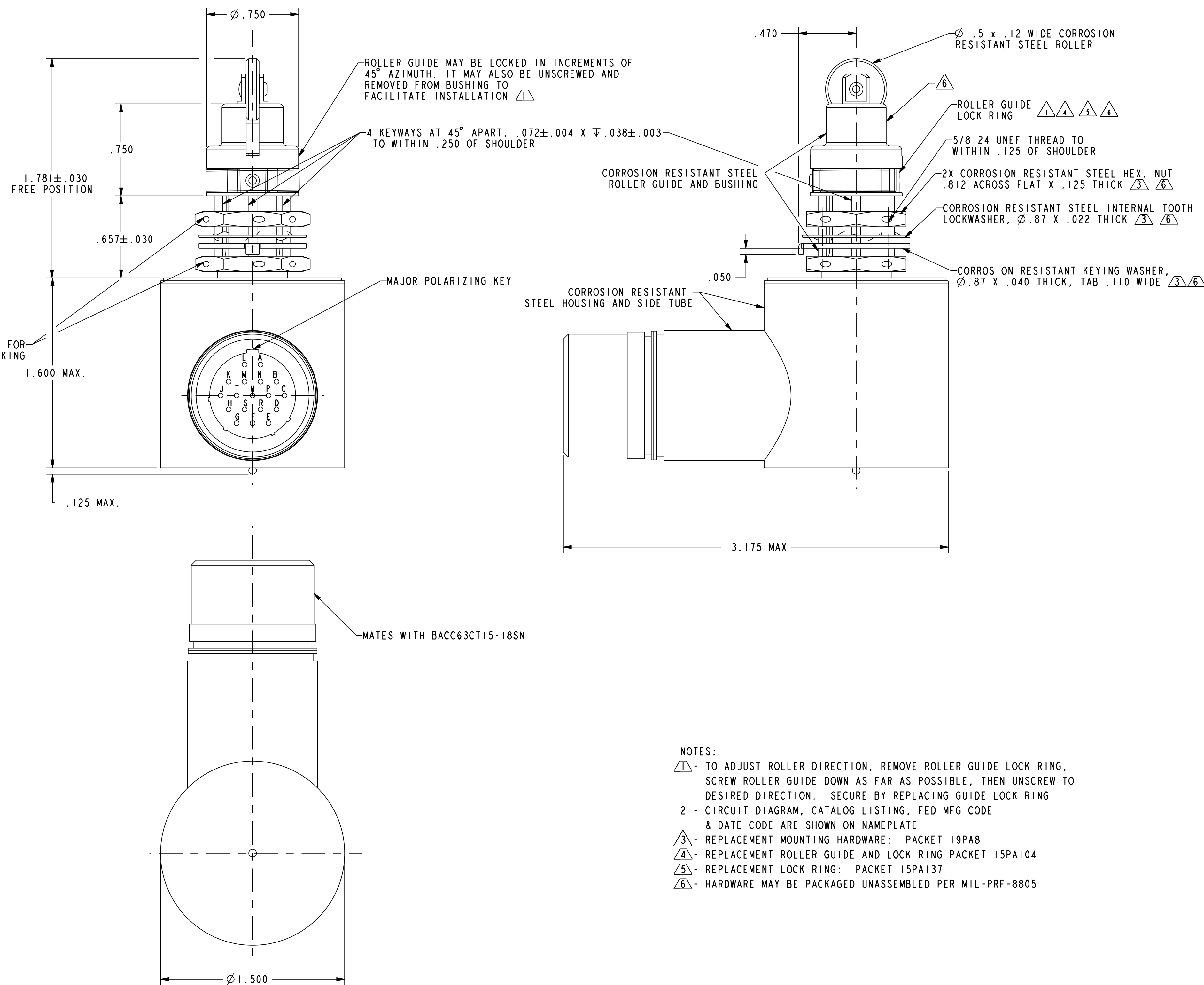
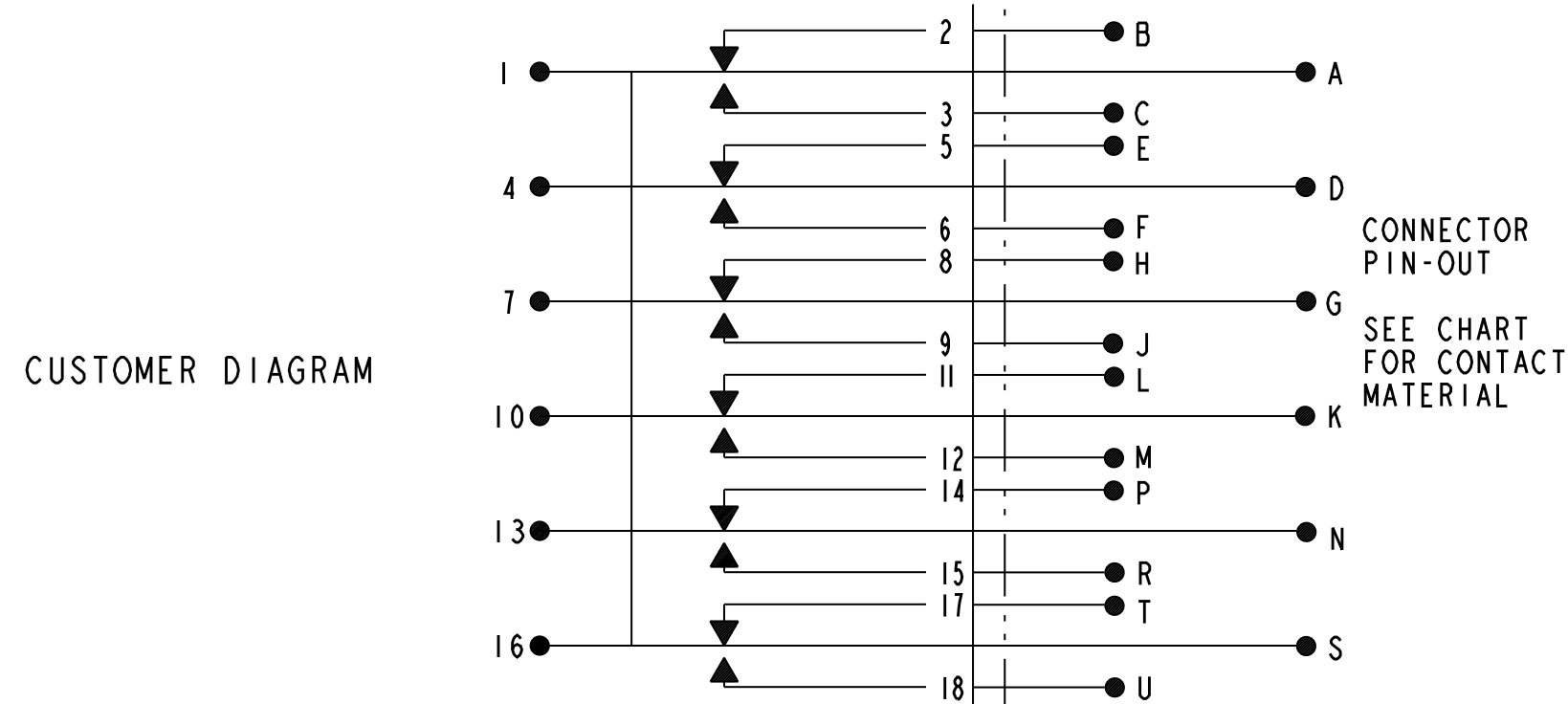


HONEYWELL PART NUMBER 426HE15-R



REV	DOCUMENT	CHANGED BY	CHECK
F	0054611	MBN 15JUL09	CMH

SPECIFICATION DETAILS:		
STANDARD:	CONFORMS TO	
CONSTRUCTION:		
ENCLOSURE DESIGN	HERMETIC SEAL PER MIL-PRF-8805, SYMBOL 5	
CONTACT MATERIAL & CONFIGURATION	SEE CIRCUIT DIAGRAM	
CIRCUIT CONFIGURATION	S P D T (6)	
TERMINATION	D38999 / 25ND18PN	
WEIGHT	8.5 OZ MAX	
O-RING MATERIAL	FLUOROSILICONE ELASTOMER	
ELECTRICAL CHARACTERISTICS:		
DIELECTRIC STRENGTH & INSULATION RESISTANCE	DIELECTRIC STRENGTH (≈ 60 Hz FOR 5 SECONDS) 1000 V Rms, 500 μ A (MAX LKG)	INSULATION RESISTANCE (500 VDC \pm 10%) 1000 megohms MIN
-BETWEEN TERMINALS AND EXPOSED NON-CURRENT CARRYING METAL	.	.
-BETWEEN TERMINALS OF MUTUALLY INSULATED CIRCUITS	.	.
-BETWEEN ALL UNCONNECTED TERMINALS OF THE SAME POLE	.	.
SWITCH RESISTANCE	N/A	
RECOMMENDATION FOR USE: SEE CHART	NOT RECOMMENDED: SEE CHART	
MAX ELECTRICAL RATINGS:		

CONTACT ARRANGEMENT: 6 S P D T							
RATINGS				RATINGS			
	SEA LEVEL		50,000 FT		SEA LEVEL		50,000 FT
LOAD	28 VDC		28 VDC	LOAD	28 VDC		28 VDC
RES	SEE CHT		SEE CHT	RES	SEE CHT		SEE CHT
IND	SEE CHT		SEE CHT	IND	SEE CHT		SEE CHT
MOTOR	SEE CHT		SEE CHT	LAMP	SEE CHT		SEE CHT

MECHANICAL CHARACTERISTICS:	
CHARACTERISTICS	
COINCIDENCE OF OPERATING AND RELEASING POINTS	.010 OF PLUNGER TRAVEL
OPERATING FORCE	6-12 LBS
FULL OVERTRAVEL FORCE	30 LBS MAX
RELEASE FORCE	4 LBS MIN
PRETRAVEL	.040 MAX
DIFFERENTIAL TRAVEL	.030 MAX
OVERTRAVEL	.250 MIN
MOUNTING TORQUE	15 IN-LBS RECOMMENDED PER MIL-PRF-8805
MOUNTING STRENGTH	30-IN LBS MAX WILL NOT CAUSE SWITCH DAMAGE
ACTUATOR STRENGTH	30 LBS APPLIES IN A DIRECTION TO CAUSE SWITCH ACTUATION
LIFE:	
MECHANICAL LIFE	150,000 CYCLES
ELECTRICAL LIFE AT FULL RATED LOAD	SEE CHART
ENVIRONMENTAL:	
TEMPERATURE RANGE	-55° C +85° C
ALTITUDE RANGE	SEA LEVEL TO 50,000 FEET
SHOCK	PER MIL-PRF-8805 HALF SINE-75g
VIBRATION	PER BOEING D6-81926, REV H (ZONE 3, CATEGORY A)
MOISTURE RESISTANCE	PER MIL-PRF-8805 (10 DAY TEST)
THERMAL SHOCK	200 CYCLES PER MIL-PRF-8805
SALT SPRAY	PER MIL-PRF-8805 (96 HOUR TEST)
PREDICTED LIFE RATINGS BEYOND MIL-PRF-8805 REQUIREMENTS:	

ELECTRICAL LOAD/ENDURANCE REQUIREMENTS @ 28 VDC									
CIRCUIT			CONTACT TYPE	LOAD TYPE	CURRENT (mA)			INDUCTANCE	ELECTRICAL ENDURANCE
					MIN	NOMINAL	MAX		
A-B	AND	A-C	GOLD BIFURCATED	INDUCTIVE	3	-	350	80 mh	150000
D-E	AND	D-F		RESISTIVE	1	-	40	N/A	150000
K-L	AND	K-M							
G-H	AND	G-J	GOLD PLATED SILVER	INDUCTIVE	-	110	-	1.5 h	150000
N-P	AND	N-R		INDUCTIVE	150	-	2000	180 mh	75000
S-T	AND	S-U		RESISTIVE	1000	-	3000	180 mh	37500
				INDUCTIVE	N/A	-	3150	180 mh	100
				RESISTIVE	1	-	50	N/A	150000

DESIGN UNITS: INCH				DRAWN		MBN		24MAR09		<div><div></div><div>Honeywell</div></div>											
TOLERANCES UNLESS NOTED:				CHECK		DT		24MAR09													
NO PLACES				X		±		THIS DRAWING COVERS A PROPRIETARY ITEM AND IS THE PROPERTY OF HONEYWELL. THIS DRAWING IS NOT TO BE COPIED OR USED WITHOUT THE PERMISSION OF HONEYWELL.		TITLE		SWITCH, ENCLOSED									
ONE PLACE				.XX		±															
TWO PLACE				.XXX		±															
THREE PLACE				X		±															
ANGLES				X		±															
THIRD ANGLE PROJECTION				<div><div></div><div></div></div>						INTERPRET PER ANSI Y14.5M-1982 OTHER HONEYWELL ENGINEERING STANDARDS MAY APPLY		SIZE		TYPE		CAGE CODE		DRAWING NAME		REV	
										D		I		91929		426HE15-R		F			
				Pro/ENGINEER						3D		SCALE		2:1				SHEET		1 OF 1	