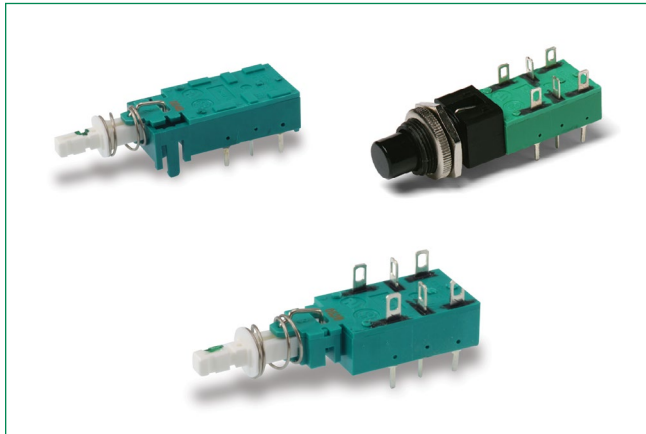


NE-18 Series

Mains / Power Switches



Agency Approvals

Agency	Agency File Number
	E61760

Specifications

Electrical Rating	NE18 Series: 8A GP, 125 VAC, 50/60 Hz, 1E4, T70 6A GP, 250 VAC, 50/60 Hz, 1E4, T70 6(4)A RM, 250 VAC, 50/60 Hz, 1E4, T70 6/48A RC, 250 VAC, 50/60 Hz, 1E4, T70 1RA, 100 VDC, 1E4, T70 8RA, 30VDC, 1E4, T70 NE18CTII Series: 4A GP, 250 VAC, 50/60 Hz, 1E4, T70 4/48A RC, 250 VAC, 50/60 Hz, 1E4, T70 1RA, 100 VDC, 1E4, T70 4RA, 30VDC, 1E4, T70
Dielectric Strength (50 Hz, 1 min.)	2,000 V
Operating Life at Max. Load and at Max. INRUSH Current	$\wedge 10^4$ operations ⁵
Contact Resistance	Initial: 50m Ω ; After 104 operations: 70m Ω .
Insulation Resistance	$\wedge 10^{12}$ Ω chassis – nearest contact; $\wedge 10^{12}$ Ω mains contact – mains contact; $\wedge 10^{12}$ Ω mains contact – mains contact after 10^4 operations.
Low Voltage Contact	-
Switching Power Max.	12W
Switching Voltage Max.	24V
Switching Current Max.	0.5A
Total Travel	4.7mm (0.185 inch)
Latching Travel	3.3mm (0.130 inch)
Operating Force	Without auxiliary low voltage contacts: NE18: 7N (700 grams); NE18CTII: 9.5N (950 grams). With auxiliary low voltage contacts: NE18: 8N (800 grams).
Sealing	Dust Proof

Description

The NE-18 series of mains/power switches were designed with consumer electronics and audio equipment in mind. Developers choose reliable NE-18 switches for their innovative product designs because of the wide variety of buttons and contact configurations available and the ability to select either a chassis or panel mount.

Features & Benefits

- Chassis or panel mount
- Various contact configurations
- Various buttons
- RoHS compliant

Applications

- Mains/power switching
- Audio equipment
- Consumer electronics
- Digital products

Materials

Housing, Actuator & Terminal Board	Thermoplastic polyester (UL 94V-0).
Movable Contact	Silver nickel alloy, silver plated.
Fixed Contacts	Copper alloy, silver plated.
Common Contacts & Terminals	Music Wire
Return Spring	

Notes:

All models are RoHS compliant and compatible. Specifications and materials listed above are for switches with standard options. For information on specific and custom switches, consult Customer Service Center.

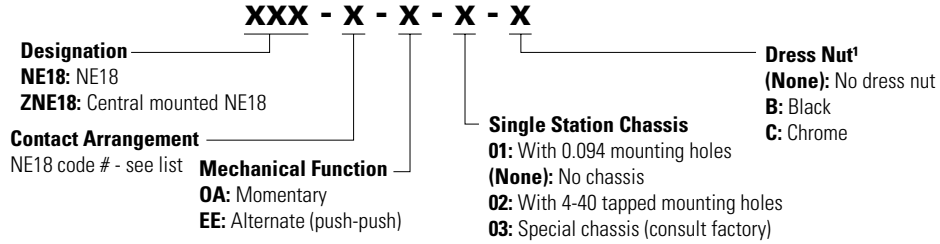
NE-18 Series

Mains / Power Switches



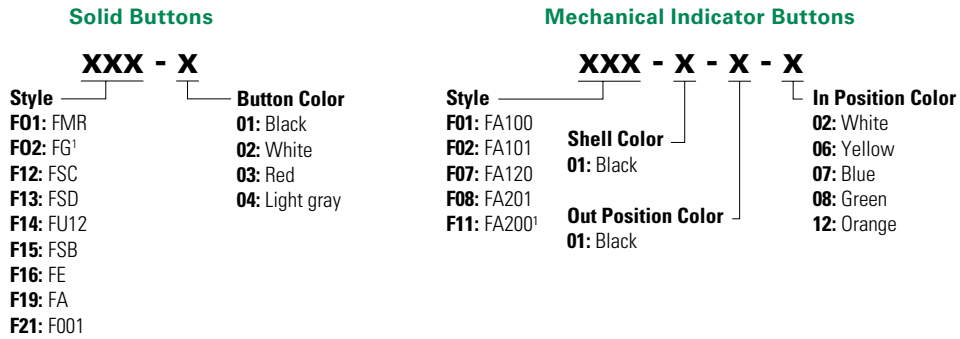
Ordering Number

To order, simply select desired option from each category and place in the appropriate box. For additional options not shown in catalog, consult Customer Service Center. If requesting only a switch, select the switch as noted below. Buttons are sold separately.



Notes:
 1. Central mounted ZNE18 series only

Order Code - Buttons



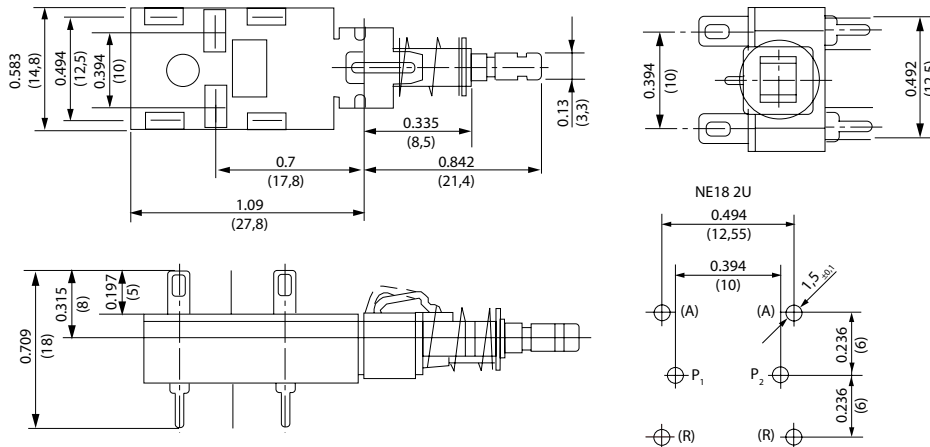
Notes:
 1. Button options for central mounting configurations, use 'FG' for central mount with chrome dress nut, use 'FA200' for central mount with black dress nut.

Button Removal

A button of a push-push switch should only be removed in the "OFF" non-latching position.

Designation & Switches with Standard Options

NE1838EE

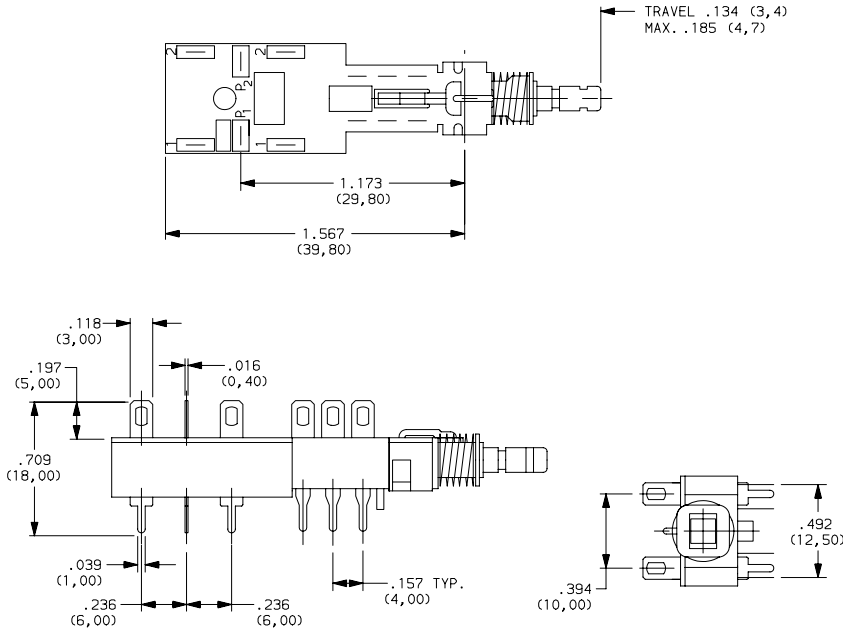


NE-18 Series

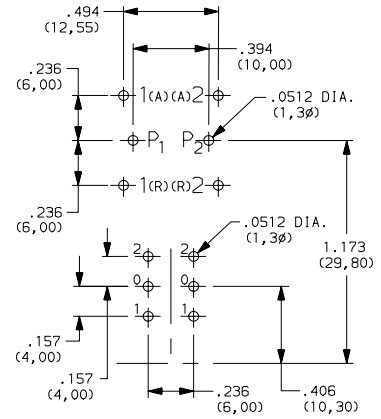
Mains / Power Switches



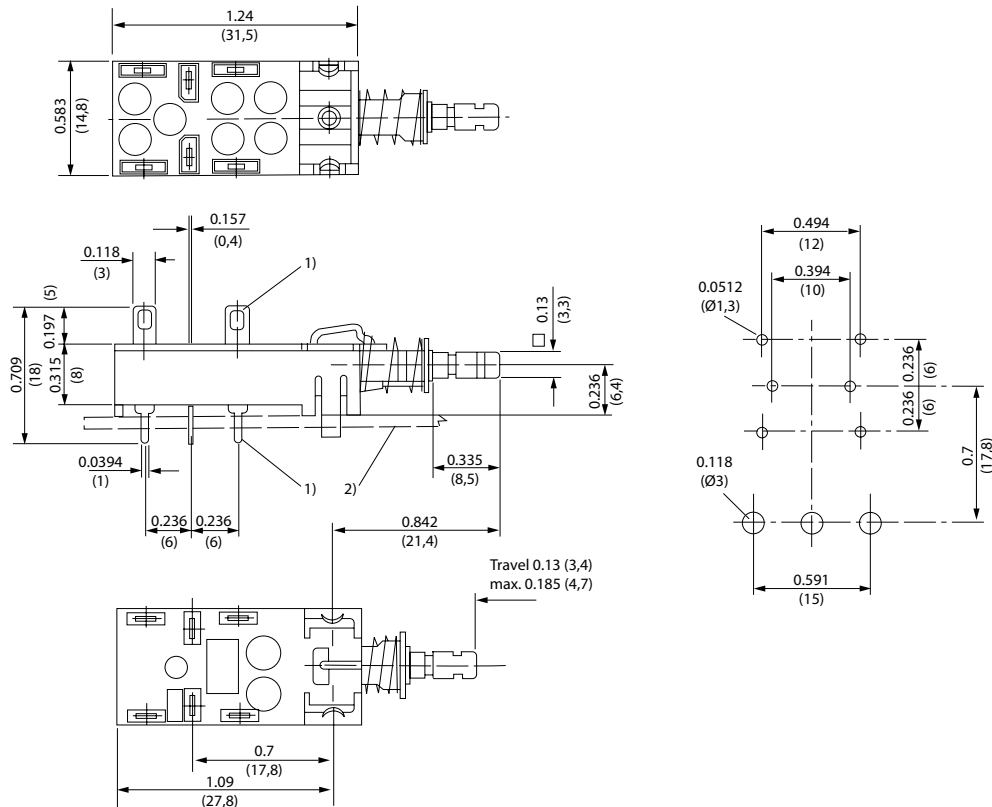
NE1839EE



PC Mounting



NE1846EE

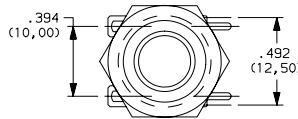
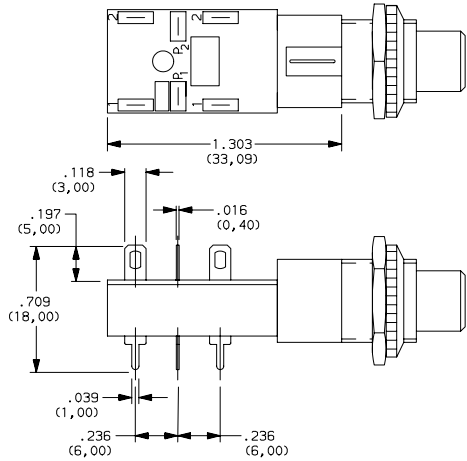


NE-18 Series

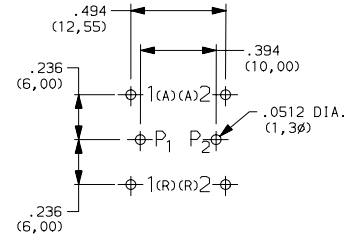
Mains / Power Switches



ZNE1838EECF0201



PC Mounting



Contact Arrangement

Option Code Contact Capacity and Availability	Style	Electrical Circuit
37	NE18 - 2AX	DPST
38	NE18 - 2UX	DPDT
51	2U + NE18 - 2AX	DPST ¹
52 (4A/64)	NE18CTII - 2AX	DPST
39	2U + NE18 - 2UX	DPDT ¹
41	NE18 - 2AP	DPST
42	NE18 - 2UP	DPDT
43	NE18 - 2AW	DPST
44	NE18 - 2UW	DPDT
45	NE18 - 2ASX	DPST

Option Code Contact Capacity and Availability	Style	Electrical Circuit
46	NE18 - 2USX	DPDT
47	NE18 - 2ASP	DPST
48	NE18 - 2USP	DPDT
49	NE18 - 2ASW	DPST
50	NE18 - 2USW	DPDT
54	2U + NE18 - 2AW	DPST
55	2U - NE18 - 2AP	DPST
56	2U + NE18 - 2UW	DPDT
57	2U + NE18 - 2UP	DPDT

Notes:
 1. 2U + Denotes auxiliary set of low current contacts DPDT
 2A = DPST
 2U = DPDT
 S = Snap-in mounting
 X = Solder lug/PC pins
 W = Solder lugs only
 P = PC pins only

Notes:
 Contact plating is silver on all Power Switches.
 The electrical function is Break Before Make (BBM) on all Power Switches.
 The terminals will be epoxy sealed.

Type	Possible Contact Arrangement		Contact Spacing	Protection Class (CEE 24)	Approvals
	Power Contacts ¹	Auxiliary Contacts			
NE18	2A ²	2U	> 3mm (0.118 inch)	II	 UL61058-1
NE18	2A ² , 2U				
NE18CTII	2A ²	-	> 3mm (0.118 inch)	II	

Notes:
 1. A = make contact, U = changeover contact
 2. With 2A mains contacts: Mounting only by PC pins is not sufficient.

Mechanical Function

Option Code	Function
OA	Momentary
EE	Alternate (push-push)

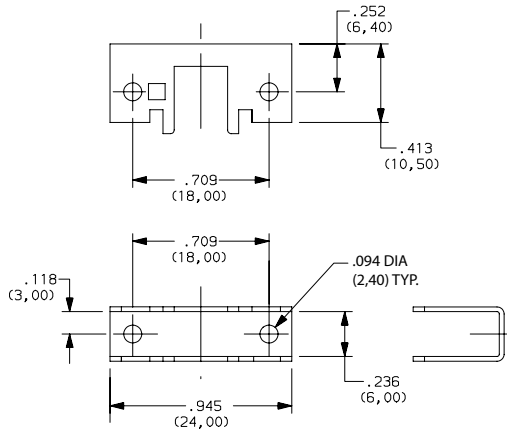
NE-18 Series

Mains / Power Switches



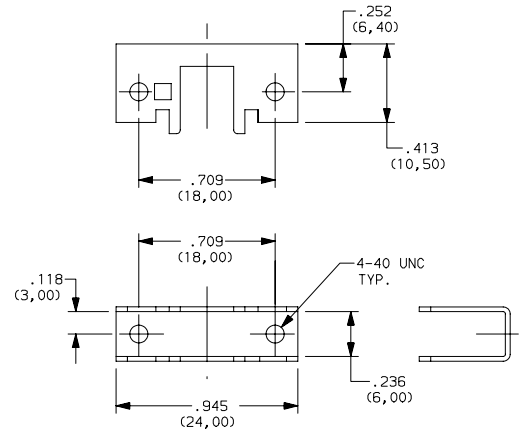
Single Station Chassis

01 with 0.094 Mounting Holes



(None) No Chassis

02 with 4-40 Tapped Mounting Holes

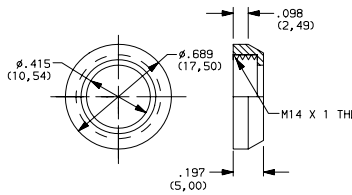


03 Special Chassis (Consult Factory)

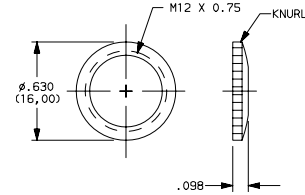
(None) No Dress Nut

Dress Nut

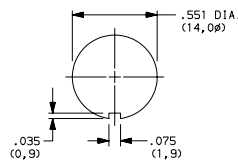
B Black



C Chrome

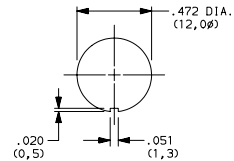


Panel Cutout



Note: Available with ZNE18 designation and FA200 buttons.

Panel Cutout



Note: Available with ZNE18 designation and FG buttons.

NE-18 Series

Mains / Power Switches

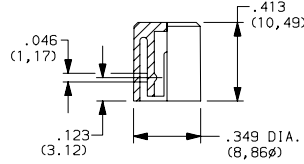
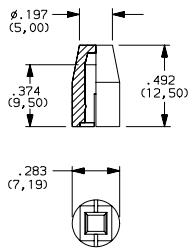


Solid Button

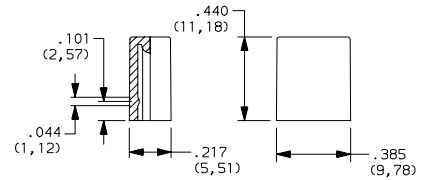
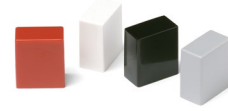
Style

F02 FG

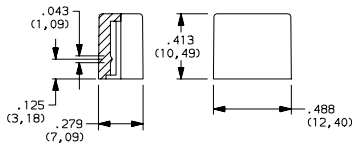
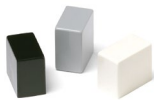
F01 FMR



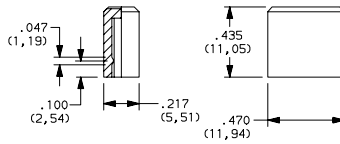
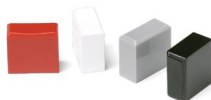
F12 FSC



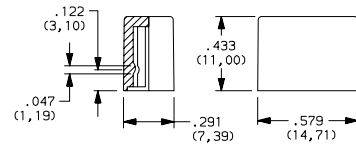
F13 FSD



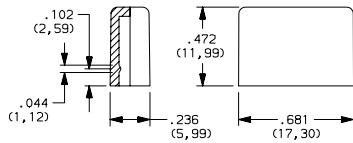
F14 FU12



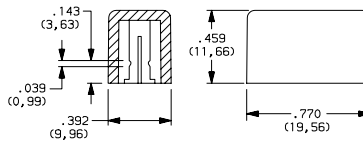
F15 FSB



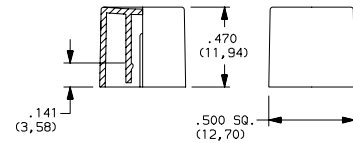
F16 FE



F19 FA



F21 F001



NE-18 Series

Mains / Power Switches



F01~F19 color

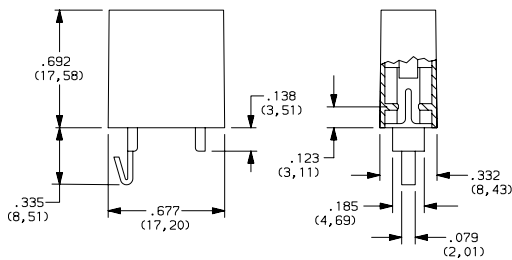
Option Code	Color
01	Black
02	White
03	Red
04	LT. Gray

F21 color

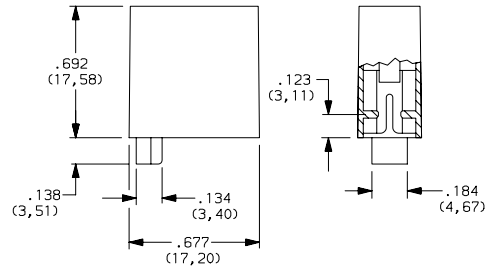
Option Code	Color
01	Black
02	White
03	Red
04	LT. Gray
09	Black / Chrome 09 (F03,F06 & F07) buttons only

Mechanical Button Style

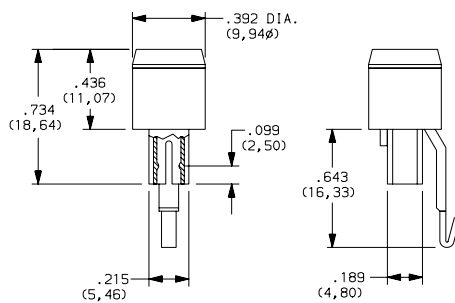
F01 FA100



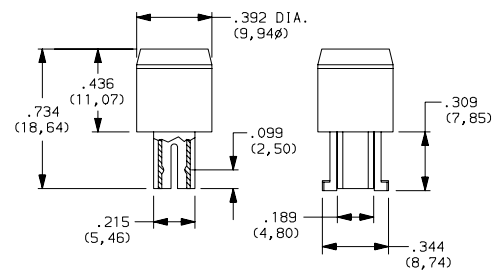
F02 FA101



F08 FA201



F11 FA200



Shell Color

01 Black

Out Position Color

01 Black

In Position Color

Option Code	Color
02	White
06	Yellow
07	Blue
08	Green
12	Orange

Disclaimer Notice - Information furnished is believed to be accurate and reliable. However, users should independently evaluate the suitability of and test each product selected for their own applications. Littelfuse products are not designed for, and may not be used in, all applications. Read complete Disclaimer Notice at <http://www.littelfuse.com/disclaimer-electronics>.