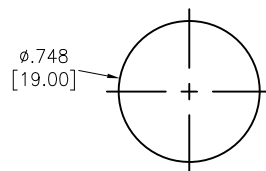
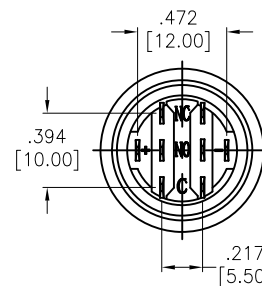
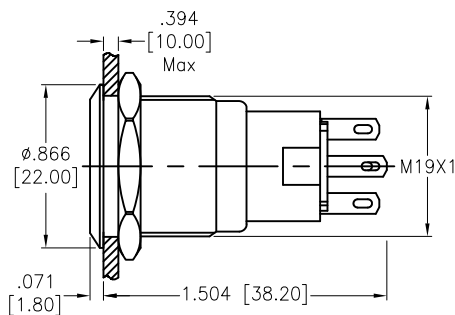
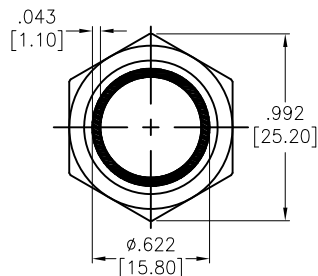


APPROVED: _____

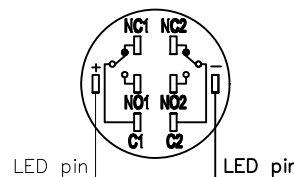
DATE: _____ TITLE: _____

Rev	AWO #	Description	Date	Appr
-		RELEASED	11/2/21	
A		UPDATE SPEC.	11/12/21	WX/RC

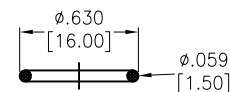
The shaded part is light design



MAX.PANEL THICKNESS
RECOMMENDED PANEL CUT



Contact Composition



Seal Ring

SPECIFICATIONS:

Material:

Body: PBT, Rated UL94V-0

Bushing: Stainless Steel, Varnish polished

Button: Stainless Steel, Varnish polished

Contact Material: Silver Alloy, (2.8x0.5mm)

Nut: Brass, Nickel plated

Electrical:

Voltage rating: 250V

Current rating: 5A max

Contact resistance: 50 mΩ max.

Insulation resistance: 1000M ohms min @ 500V DC.

Dielectric withstanding voltage: 1500V RMS, 50Hz.

Electrical Life: 50,000 cycles min at full load.

Mechanical:

Torque: 0.6Nm max.

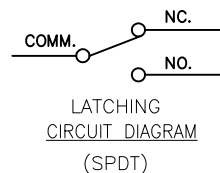
Temperature Rating:

Operating temperature: -25°C to +55°C

Environmental:

Sealed IP67 Rated

Lead free, RoHS compliant



LATCHING
CIRCUIT DIAGRAM
(SPDT)

SW-PB7-03LB22CFRXXXXX

"x"	LED Color	LED Voltage	
R	Red	6V	6V AC/DC
G	Green	12V	12V AC/DC
Y	Yellow	24V	24V AC/DC
O	Orange	110V	110V AC/DC
B	Blue	220V	220V AC/DC
W	White	220V	220V AC/DC

UNLESS OTHERWISE SPECIFIED ALL DIMENSIONS
ARE INCHES [MM]. TOLERANCES: EXCEPT AS NOTED

INCHES	HOLES
.X ±.10	ØX ±.10
.XX ±.020	ØXX ±.015
.XXX ±.015	ØXXX ±.010

DRAWN	WX	11/2/21
CHECKED	RC	11/2/21
APPROVED		

THIS DRAWING CONTAINS INFORMATION THAT IS PROPRIETARY
AND SHOULD NOT BE USED WITHOUT PRIOR WRITTEN
PERMISSION FROM ADAM TECH

**ADAM
TECH**

909 Rahway Avenue,
Union, NJ 07083
Phone: 908-687-5000
Fax: 908-687-5710

TITLE SWITCH, ANTI-VANDAL, PUSH BUTTON,
19mm, LIGHTED RING, SPDT, LATCHING, N.O.-N.C.

SIZE X	PART NO. SW-PB7-03LB22CFRXXXXX	REV. A
REF: S00198T	SCALE: NTS	SHEET 1 OF 1