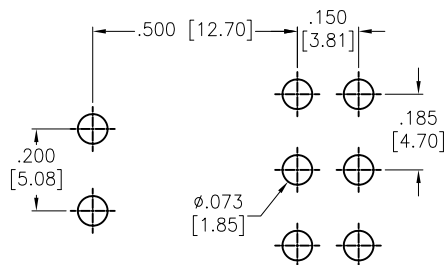
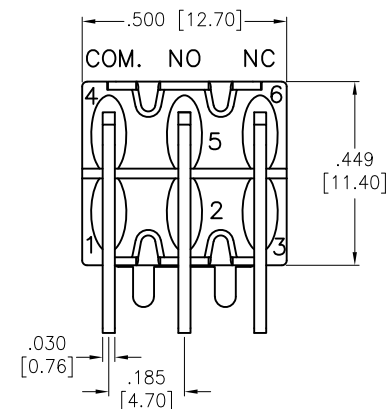
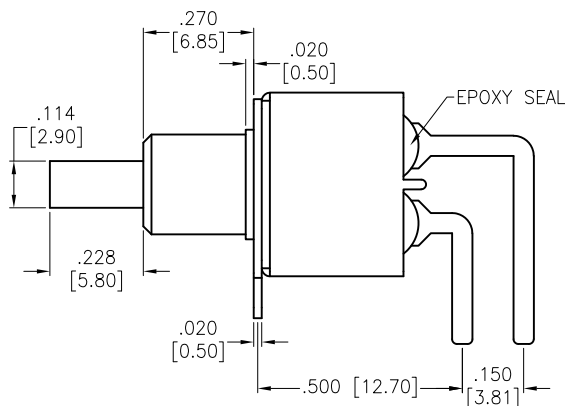
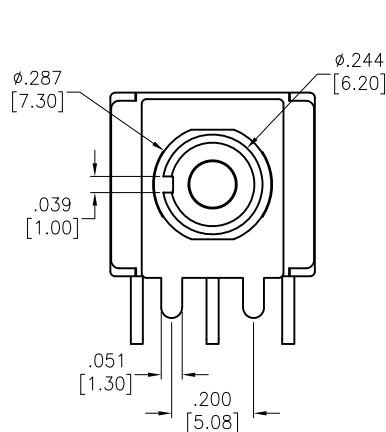
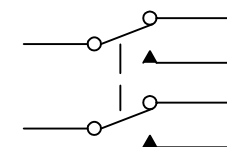


APPROVED: _____
 DATE: _____ TITLE: _____

| Rev | AWO # | Description | Date | Appr |
|-----|-------|-------------|---------|------|
| - | | RELEASED | 2/17/21 | |



RECOMMENDED PCB LAYOUT



CIRCUIT DIAGRAM
(DPDT) ON-MOMENTARY

SPECIFICATIONS:

Material:

Movable Contact: Copper Alloy, Silver Plated

Terminal: Copper Alloy, Silver Plated

Electrical:

Voltage rating: 120VAC or 38VDC

Current rating: 1 Amps

Contact resistance: 10 mΩ max

Insulation resistance: 1,000 Mohms min

Dielectric withstanding voltage: 1,500V RMS @Sea level

Temperature Rating:

Operating temperature: -30°C to +85°C

Environmental:

Lead free, RoHS compliant



| | | | | | |
|---|--|--------------------------------------|--|--|--|
| UNLESS OTHERWISE SPECIFIED ALL DIMENSIONS ARE INCHES [MM] TOLERANCES: EXCEPT AS NOTED INCHES HOLES .X ± .10 Ø.X ± .10 .XX ± .020 Ø.XX ± .015 .XXX ± .015 Ø.XXX ± .010 | | | | ADAM TECH 909 Rahway Avenue, Union, NJ 07083 Phone: 908-687-5000 Fax: 908-687-5710 | |
| APPROVALS DRAWN LH 2/17/21 CHECKED AC 2/17/21 APPROVED | | | | TITLE SNAP-ACTING PUSH BUTTON SWITCH, RIGHT ANGLE DPDT, ON-MOMENTARY, SILVER PLATED, PCB TYPE | |
| SIZE X | | PART NO. SW-PB8-BB00B6QE-1 | | REV. - | |
| REF: S00198T | | SCALE: NTS | | SHEET 1 OF 1 | |