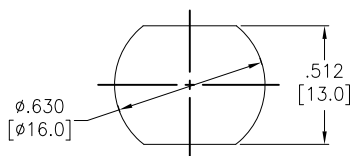
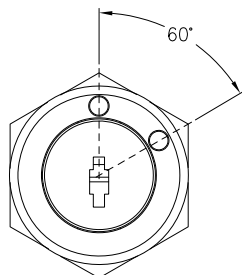


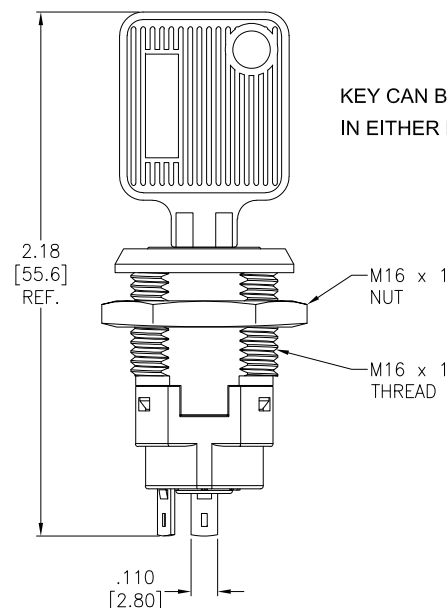
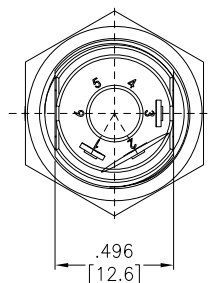
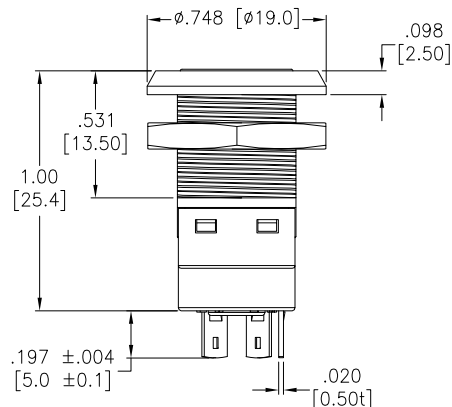
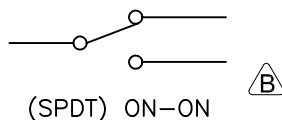
APPROVED: _____

DATE: _____ TITLE: _____

Rev	AWO #	Description	Date	Appr
-		RELEASED	9/24/20	
A		UPDATE DRAWING.	5/11/21	JJ/RC
B		ADDED DRAWING.	8/9/21	WX/RC



RECOMMENDED
PANEL CUT-OUT



SPECIFICATIONS:

Material:

Body: Steel, Polished Chrome

Electrical:

Rating: 4A @ 125V AC

2A @ 250V AC

Contact resistance: 100 mohms max (Initial)

Insulation resistance: 500 Mohms min @ 500V AC

Dielectric withstanding voltage: 500V AC for 1 Min.

Mechanical:

Operating Life: 5,000 cycles min

Temperature Rating:

Operating temperature: -25°C to +85°C

Environmental:

Lead free, RoHS compliant



ADAM P/N	SPEC.
SW-R-K9-A	Key pulled on both positions. Note: this would be our standard
SW-R-K9-B	Key pulled on 1 position

UNLESS OTHERWISE SPECIFIED ALL DIMENSIONS
ARE INCHES [MM]. TOLERANCES: EXCEPT AS NOTED

INCHES	HOLES
.X ± .10	ØX ± .10
.XX ± .020	ØXX ± .015
.XXX ± .015	ØXXX ± .010

DRAWN	SS	9/24/20
CHECKED	SS	9/24/20
APPROVED		

THIS DRAWING CONTAINS INFORMATION THAT IS PROPRIETARY
AND SHOULD NOT BE USED WITHOUT PRIOR WRITTEN
PERMISSION FROM ADAM TECH

ADAM
TECH

909 Rahway Avenue,
Union, NJ 07083
Phone: 908-687-5000
Fax: 908-687-5710

TITLE
SWITCH, KEYLOCK, 16MM, SPDT, ON-ON,
PANEL MOUNT, SOLDER TERMINAL

SIZE X	PART NO. SW-R-K9-X	REV. B
REF: S00206C	SCALE: NTS	SHEET 1 OF 1