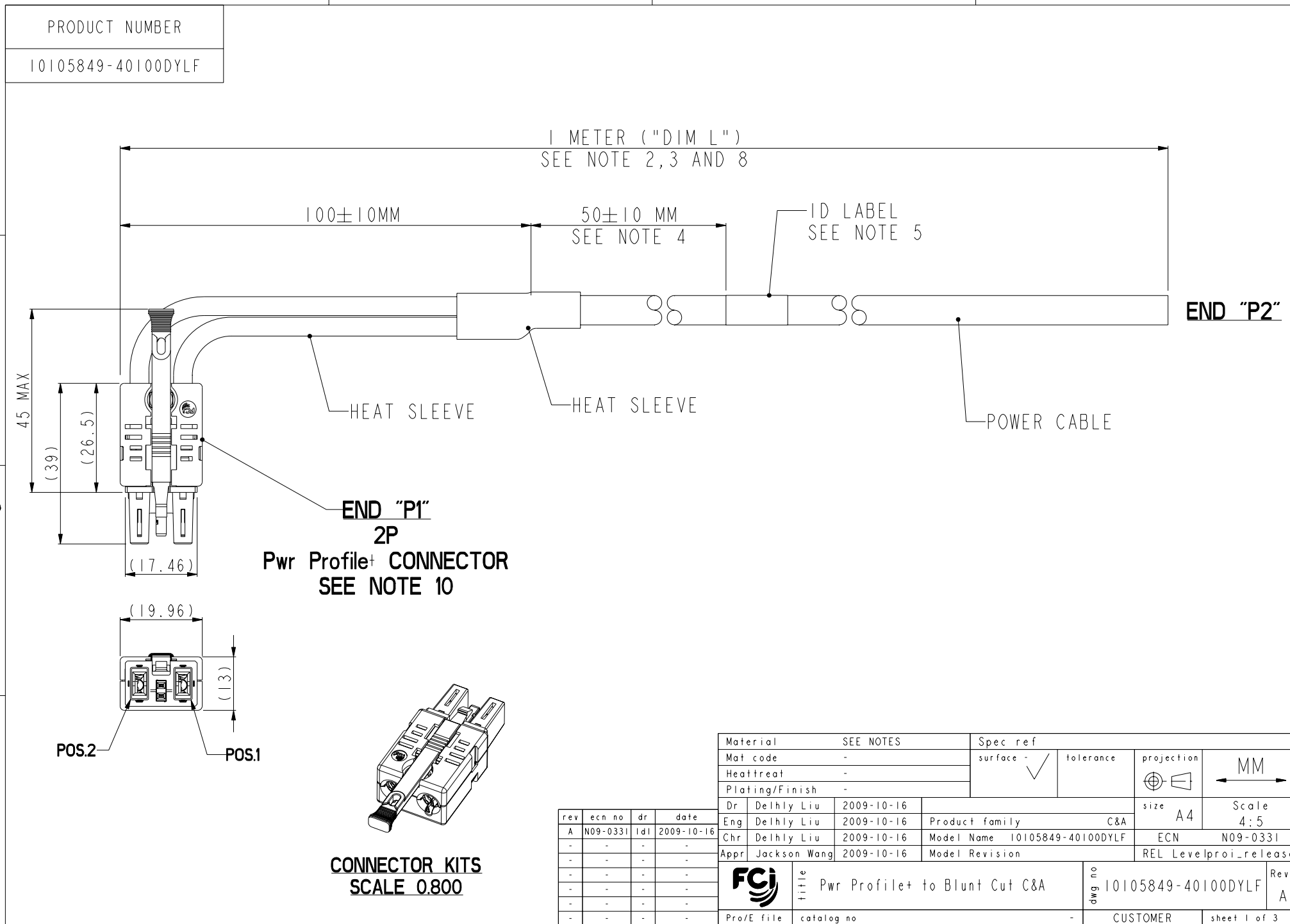



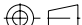




FCI CONFIDENTIAL

This document is the property of and embodies CONFIDENTIAL and PROPRIETARY information of FCI. No part of the information shown on this document may be used in any way or disclosed to others without the written consent of FCI. Copyright FCI.



rev	ecn no	dr	date
A	N09-0331	Id1	2009-10-16
-	-	-	-
-	-	-	-
-	-	-	-
-	-	-	-
-	-	-	-

Material			SEE NOTES		Spec ref			
Mat code			-		surface 	tolerance	projection 	MM 
Heat treat			-					
Plating/Finish			-					
Dr	Delhly Liu	2009-10-16				size A4	Scale 4:5	
Eng	Delhly Liu	2009-10-16	Product family C&A					
Chr	Delhly Liu	2009-10-16	Model Name 10105849-40100DYLF					
Appr	Jackson Wang	2009-10-16	Model Revision			ECN N09-0331		
						REL Levelproi-release		
		title Pwr Profile+ to Blunt Cut C&A				dwg no 10105849-40100DYLF		Rev A
Pro/E file		catalog no		-		CUSTOMER		sheet 1 of 3

REV F: 2008-04-17



This document is the property of and embodies CONFIDENTIAL and PROPRIETARY information of FCI. No part of the information shown on this document may be used in any way or disclosed to others without the written consent of FCI. Copyright FCI.

FCI CONFIDENTIAL

PRODUCT NUMBER

10089863-101LF

NOTES:

- END "PI" MATES WITH FCI HEADER PART NUMBER: 10089870 (W/O GROUNDING SHIELD)
OR 10089872 (W/GROUNDING SHIELD)
- UNLESS OTHERWISE SPECIFIED ASSEMBLED LENGTH TOLERANCE =
< = 1 METER: $\pm 15.0\text{mm}$
> 1 METER TO 10 METER: $\pm 2\%$ OF "DIM L"
> 10 METER: +0.00% / -4% OF "DIM L"
- PART NUMBER DESCRIPTION:

BASE NUMBER

DASH NUMBER

1 0 1 0 5 8 4 9

- 4 0 1 0 0 D Y L F

LEAD FREE (SEE NOTE 9)

Y: NOT APPLICABLE TO THIS ASSEMBLY

POWER
WIRE SIZE

	WIRE SIZE(mm ²)
4	6 mm ²

* COLOR: BLACK, UNLESS
OTHERWISE SPECIFIED

SIGNAL CONTACT TYPE

SIGNAL
WIRE SIZE

D	SIGNAL JUMPER CONTACT	NONE
---	-----------------------	------

LENGTH (DIM L)
XXXX: XX METERS, XX CENTIMETERS
0100: 01 METERS, 00 CENTIMETERS



title

Pwr Profile+ to Blunt Cut C&A

dwg. no

10105849-40100DYL F

Rev.
A

Pro/E file

catalog no

CUSTOMER

sheet 2 of 3

REV F: 2006-04-17

PDM: Rev:A

STATUS: Released

Printed: Nov 03, 2009



This document is the property of and embodies CONFIDENTIAL and PROPRIETARY information of FCI. No part of the information shown on this document may be used in any way or disclosed to others without the written consent of FCI. Copyright FCI.

FCI CONFIDENTIAL

PRODUCT NUMBER

10105849-40100DYL F

NOTES CONTINUED:

4. UNLESS OTHERWISE SPECIFIED LABEL POSITION SHALL BE 50mm FROM CABLE CUT END OF ENDED PI.
5. UNLESS OTHERWISE SPECIFIED STANDARD LABEL DETAILS SHALL BE:
 - MANUFACTURER CODE OR NAME
 - FCI P/N
 - REVISION
 - DATE CODE WW/YY FORMAT
 - COUNTRY ORIGINFONT SHALL BE CLEARLY VISABLE AND BLACK IN COLOR.
6. ALL CABLE ASSEMBLIES SHALL BE TESTED 100% FOR CONTINUITY AS DEFINED IN WIRING LIST.
7. UNLESS OTHERWISE SPECIFIED ALL CABLE ASSEMBLIES SHALL BE 100% HI-POT TESTED BY APPLYING 300V DC FOR MINIMUM OF 10ms, UNLESS ACTIVE COMPONENTS ARE USED IN THIS ASSEMBLY.
8. THIS DIMENSION IS A FINISHED PRODUCT LENGTH.
9. LEAD FREE PRODUCTS MEET EUROPEAN UNION DIRECTIVES AND OTHER COUNTRY REGULATIONS AS DESCRIBED IN GS-22-008.
10. CONNECTOR ASSEMBLIES SHOWN ARE FOR REFERENCE ONLY AND MAY NOT SHOW ALL PART DETAIL.
11. PACKAGING SPECIFICATION AS PER: GS-14-1445 AND GS-14-1490.
12. MATERIALS:
 - CABLE: UL APPROVED, TEMPERATURE RATING 105°C, 120V MIN.
 - HOUSING: PPA, UL94V-0 GLASS FILLED, COLOR: BLACK
 - POWER CONTACTS: COPPER ALLOY WITH CRIMPING TYPE
 - SIGNAL CONTACTS: COPPER ALLOY
13. A "△" SYMBOL WILL BE NEXT TO ANY DIMENSION, VIEW, OR NOTE WHICH HAD BEEN MODIFIED WITH THE CURRENT DRAWING REVISION.



title

Pwr Profile+ to Blunt Cut C&A

dwg. no

10105849-40100DYL F

Rev.
A

Pro/E file

catalog no

-

CUSTOMER

sheet 3 of 3

REV F: 2006-04-17

3 PDM: Rev:A

STATUS: Released

4 Printed: Nov 03, 2009