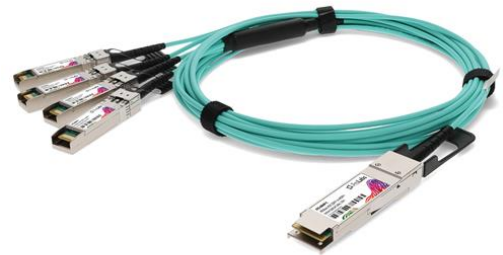


470-ABMP-C

Dell® 470-ABMP Compatible TAA Compliant 40GBase-AOC QSFP+ to 4xSFP+ Active Optical Cable (850nm, MMF, 10m)

Features:

- 850nm VCSEL transmitter, PIN photo-detector receiver
- All-metal housing for superior EMI performance
- Electrical interface compliant to QSFP+ connector (SFF-8436) and SFP+ connectors (SFF-8431)
- Hot Pluggable
- Operating temperature: 0 to 70 Celsius
- RoHS compliant and Lead free



Applications:

- 40GBase Ethernet
- Fiber Channel Application
- InfiniBand QDR, SDR, DDR
- Servers, switches, storage, and host card adapters

Product Description

This is a Dell® 470-ABMP Compatible 40GBase-AOC QSFP+ to 4xSFP+ active optical cable that operates over active fiber with a maximum reach of 10m. It has been programmed, uniquely serialized, and data-traffic and application tested to ensure it is 100% compliant and functional. We stand behind the quality of our products and proudly offer a limited lifetime warranty. This cable is TAA (Trade Agreements Act) compliant and is built to comply with MSA (Multi-Source Agreement) standards.

ProLabs' transceivers are RoHS compliant and lead-free.

TAA refers to the Trade Agreements Act (19 U.S.C. & 2501-2581), which is intended to foster fair and open international trade. TAA requires that the U.S. Government may acquire only "U.S. – made or designated country end products."



QSFP Interface Specifications

| Parameter | Description |
|-----------------------------|--------------------------------------|
| Module Form Factor | QSFP+ (Supports SFF-8436/SFF-8472) |
| Channel Data Rate | Rate 40Gbps |
| BER | $<10^{-12}$ |
| Operating Case Temperature | 0 °C to 70°C |
| Storage Temperature | -20 °C to 85°C |
| Supply Voltage | 3.3V |
| Supply Current | 180mA Per End Typical |
| Management Interface Serial | I ² C (Supports SFF-8472) |

Optical Characteristics

| Parameter | Symbol | Min. | Typ. | Max. | Unit | Notes |
|--|-------------------------------------|------|------|------|------|--------------------------------|
| Transmitter | | | | | | |
| Center Wavelength | λ_C | 840 | 850 | 860 | nm | |
| RMS Spectral Width | $\Delta\lambda$ | | | 0.65 | nm | |
| Average Launch Power Per Lane | POUT | -7.5 | | -2.5 | dBm | |
| Difference in Launch Power Between Any Two Lanes (OMA) | | | | | dB | |
| Extinction Ratio | ER | 3 | | | dB | |
| Peak Power Per Lane | | | | 4 | dBm | |
| Transmitter and Dispersion Penalty (TDP) Per Lane | TDP | | | 3.5 | dB | |
| Average Launch Power of Off Transmitter Per Lane | | | | -30 | dB | |
| Eye Mask Coordinates: (X1, X2, X3, Y1, Y2, Y3) | (0.23, 0.34, 0.43, 0.27, 0.33, 0.4) | | | | | Hit Ratio = 5×10^{-5} |
| Receiver | | | | | | |
| Center Wavelength | λ_C | 840 | 850 | 860 | nm | |
| Stressed Receiver Sensitivity in OMA Per Lane | | | | -5.4 | | 1 |
| Maximum Average Power at Receiver Input Per Lane | | | | 2.4 | | |
| Receiver Reflectance | | | | -12 | | |
| Peak Power Per Lane | | | | 4 | | |
| LOS Assert | | -30 | | | | |
| LOS De-Assert – OMA | | | | 7.5 | | |
| LOS Hysteresis | | 0.5 | | | | |

Notes:

1. Measured with conformance test signal at TP3 for BER= $10E^{-12}$.

SFP+ Interface Specifications

| Parameter | Description |
|-----------------------------|---|
| Module Form Factor | SFP+ (Supports SFF8431/SFF8432/SFF8472) |
| Channel Data Rate | Rate 1 to 10.3125Gbps |
| BER | $<10^{-12}$ |
| Operating Case Temperature | 0 to 70°C |
| Storage Temperature | -20 to 85°C |
| Supply Voltage | 3.3V |
| Supply Current | 455mA Maximum |
| Management Interface Serial | I ² C (Supports SFF-8472) |

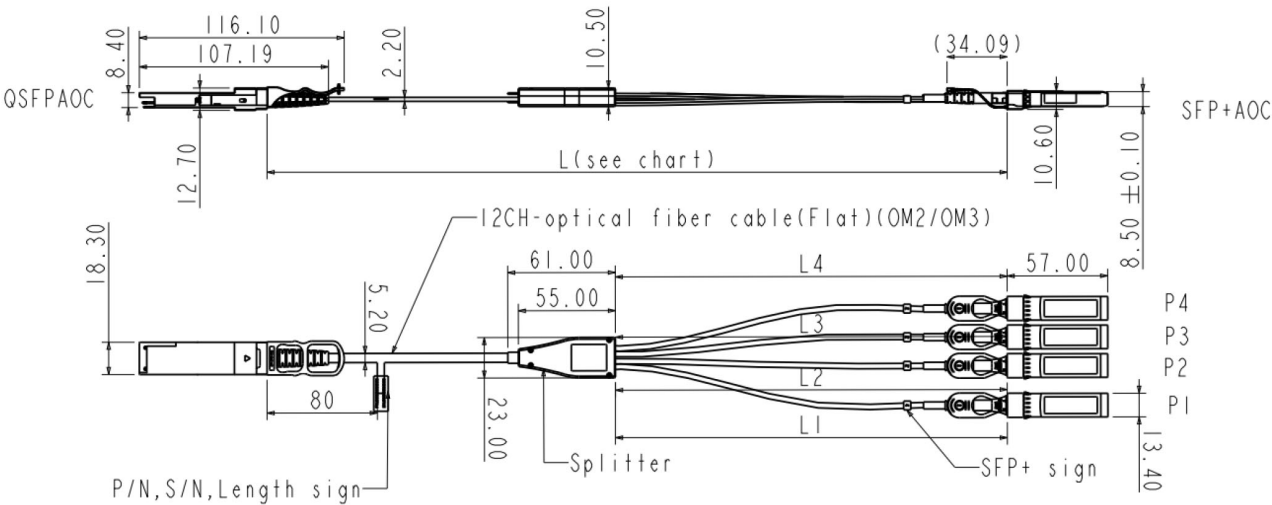
Optical Characteristics

| Parameter | Symbol | Min. | Typ. | Max. | Unit | Notes |
|--------------------------------|-------------------|------|------|--------|-------|-----------------|
| Transmitter | | | | | | |
| Center Wavelength | λ_C | 840 | 850 | 860 | nm | |
| RMS Spectral Width | $\Delta\lambda$ | | | Note 1 | nm | |
| Average Optical Power | P _{avg} | -6.5 | | -1 | dBm | 2 |
| Extinction Ratio | ER | 3.5 | | | dB | 3 |
| Transmitter Dispersion Penalty | TDP | | | 3.9 | dB | |
| Relative Intensity Noise | RIN | | | -128 | dB/Hz | -12B Reflection |
| Optical Return Loss Tolerance | | | | 12 | dB | |
| Receiver | | | | | | |
| Center Wavelength | λ_C | 840 | 850 | 860 | nm | |
| Receiver Sensitivity | P _{sens} | | | -11.1 | dBm | 4 |
| Stressed Sensitivity in OMA | | | | -7.5 | dBm | 4 |
| LOS Function | LOS | -30 | | -12 | dBm | |
| Overload | P _{in} | | | -1.0 | dBm | 4 |
| Receiver Reflectance | | | | -12 | dB | |

Notes:

1. Trade-offs are available between spectral width, center wavelength, and minimum OMA.
2. The optical power is launched into MMF.
3. Measured with a PRBS 2³¹-1 test pattern @10.3125Gbps.
4. Measured with a PRBS 2³¹-1 test pattern @10.3125Gbps and BER $\leq 10^{-12}$.

Mechanical Specifications



About ProLabs

Our experience comes as standard; for over 15 years ProLabs has delivered optical connectivity solutions that give our customers freedom and choice through our ability to provide seamless interoperability. At the heart of our company is the ability to provide state-of-the-art optical transport and connectivity solutions that are compatible with over 90 optical switching and transport platforms.

Complete Portfolio of Network Solutions

ProLabs is focused on innovations in optical transport and connectivity. The combination of our knowledge of optics and networking equipment enables ProLabs to be your single source for optical transport and connectivity solutions from 100Mb to 400G while providing innovative solutions that increase network efficiency. We provide the optical connectivity expertise that is compatible with and enhances your switching and transport equipment.

Trusted Partner

Customer service is our number one value. ProLabs has invested in people, labs and manufacturing capacity to ensure that you get immediate answers to your questions and compatible product when needed. With Engineering and Manufacturing offices in the U.K. and U.S. augmented by field offices throughout the U.S., U.K. and Asia, ProLabs is able to be our customers best advocate 24 hours a day.



Contact Information

ProLabs US

Email: sales@prolabs.com

Telephone: 952-852-0252

ProLabs UK

Email: salesupport@prolabs.com

Telephone: +44 1285 719 600