

CLIFF

METAL XLR CONNECTORS

Our metal series XLR connectors will meet the most severe specifications. All contact parts are silver plated to give low noise levels. Available in Nickel or Black finish. Large solder bucket contacts are used to make wiring easy.



FC6100 - 3 PIN FEMALE XLR 3ACF/M. RATED 16A.

FC6101 - 3 PIN FEMALE XLR 3ACF/BM. RATED 16A.



FC6120 - 4 PIN FEMALE XLR 4ACF/M. RATED 9A.

FC6121 - 4 PIN FEMALE XLR 4ACF/BM. RATED 9A.

**FC6170** - 5 PIN FEMALE XLR 5ACF/M. RATED 7.5A

FC6171 - 5 PIN FEMALE XLR 5ACF/BM. RATED 7.5A.

**FC6187** - 7 PIN FEMALE 7ACF/M. RATED 5A.

Specification

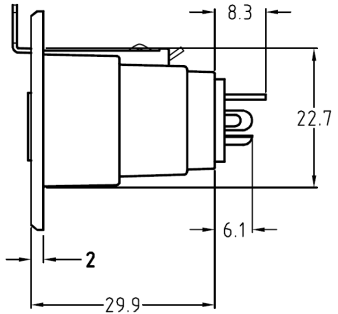
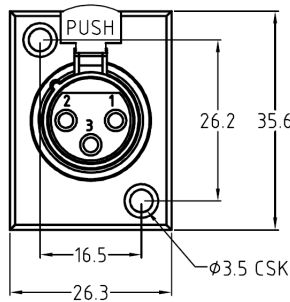
Contact Resistance: $\leq 5\text{m}\Omega$

Insulation Resistance: $\geq 5000\text{M}\Omega$

Withstand Voltage: 1400V

Durability(Mating & Unmating): ≥ 2000

Temperature range: -20°C to +80°C



ACF TYPICAL DIMENSIONS

**FC6105** - 3 PIN MALE XLR 3ACM/M. RATED 16A.

FC6106 - 3 PIN MALE XLR 3ACM/BM. RATED 16A.

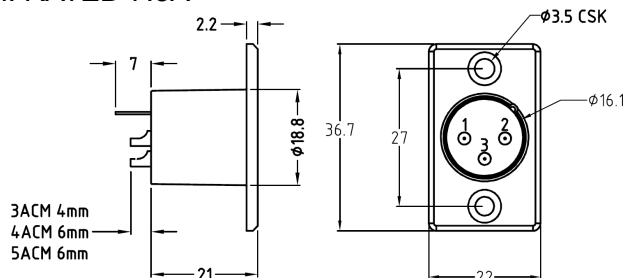


FC6125 - 4 PIN MALE XLR 4ACM/BM. RATED 9A.

FC6126 - 4 PIN MALE XLR 4ACM/BM. RATED 9A.

**FC6175** - 5 PIN MALE XLR 5ACM/M. RATED 7.5A**FC6176** - 5 PIN MALE XLR 5ACM/BM. RATED 7.5A

FC6185 - 7 PIN MALE 7ACM/M. RATED 5A.



ACM TYPICAL DIMENSIONS

© CLIFF 06/2023 ISS.5

For further information, contact sales@cliffuk.co.uk

Cliff Electronic Components Limited,

76 Holmethorpe Avenue, Holmethorpe Ind. Estate,
Redhill, Surrey RH1 2PF U.K.

Tel: +44 (0)1737 771375 Fax: +44 (0)1737 766012

www.cliffuk.co.uk



CLIFF

METAL XLR CONNECTORS



FC6140 - 3 PIN FEMALE XLR 3APF/M. RATED 16A.
FC6141 - 3 PIN FEMALE XLR 3APF/BM. RATED 16A.



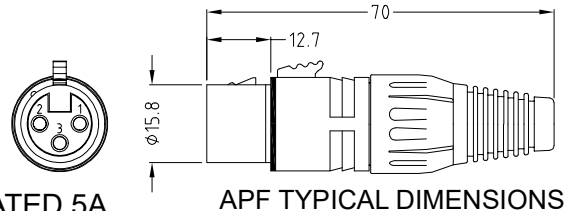
FC6150 - 4 PIN FEMALE XLR 4APF/M. RATED 10A.
FC6151 - 4 PIN FEMALE XLR 4APF/BM. RATED 10A.



FC6165 - 5 PIN FEMALE XLR 5APF/M. RATED 7.5A.
FC6166 - 5 PIN FEMALE XLR 5APF/BM. RATED 7.5A.



FC6182 - 7 PIN FEMALE 7APF/M. RATED 5A.



FC6130 - 3 PIN MALE XLR 3APM/M. RATED 16A.
FC6131 - 3 PIN MALE XLR 3APM/BM. RATED 16A.



FC6155 - 4 PIN MALE XLR 4APM/M. RATED 10A.
FC6156 - 4 PIN MALE XLR 4APM/BM. RATED 10A.



FC6160 - 5 PIN MALE XLR 5APM/M. RATED 7.5A.
FC6161 - 5 PIN MALE XLR 5APM/BM. RATED 7.5A.



FC6180 - 7 PIN MALE PLUG 7APM/M. RATED 5A.

Specification

Contact Resistance:	3 pole <5mΩ 4-7 pole <7mΩ
Insulation Resistance:	>5000MΩ
Withstand Voltage:	1400V
Capacitance:	<4 Pf

Max cable size

3 pole	- 2.5mm ²
4 pole	- 1.0mm ²
5 pole	- 1.0mm ²
7 pole	- 1.0mm ²

