

# Accessories



This image displays a variety of industrial accessories arranged on a light green background. The items include:

- A white sensor probe with a green cable and a metal mounting bracket.
- A stainless steel vertical pipe with a white sensor probe attached.
- A small, cylindrical metal component with a threaded end.
- A white, cylindrical component with a black cap.
- A white, cylindrical component with a black cap.
- A stainless steel valve with a red handle and a pressure gauge.
- A stainless steel valve with a red handle.
- A stainless steel flange with a central port.
- A stainless steel flange with a central port and a green cable.
- A blue and green cable with a connector.
- A green and black cable with a connector.

# Content

Filter Caps ..... 3

Mounting Flanges ..... 7

LC Displays ..... 11

Sampling Cells ..... 12

Drip Water Protection ..... 15

Protection Caps ..... 15

Radiation Shields ..... 16

Mounting and Connection Elements..... 19

Reference Probes..... 22

Interface Cables ..... 23

Converters and Configuration Adapters ..... 25

Connectors ..... 28

Connection Cables..... 30

# Filter Caps

## Humidity and Dew Point Sensors with Probe Diameter 12 mm (0.47")

The selection of the correct filter for the respective application is essential for the long-term flawless operation of the sensor. If you need assistance, please contact your local E+E representative: [www.epluse.com](http://www.epluse.com).

### Membrane, Polycarbonate Body



#### Features

- Very good protection against fine dust
- Temperature range:  
-40...+80 °C (-40...+176 °F)
- Response time  $t_{10/90}$ : 15 s

#### Construction

- Body: PC (Polycarbonate)
- Filter: PTFE (Polytetrafluoroethylene) -Membran
- Pore size: 1 µm
- Length: 34 mm (1.34")

#### Applications

- Building automation
- Dusty environment

#### Order code

**HA010101**

(light grey)

**HA010118**

(black)

### Metal Grid, Polycarbonate Body



#### Features

- For high RH/condensing environment, low mechanical stress and low pollution level
- Temperature range:  
-40...+120 °C (-40...+248 °F)
- Response time  $t_{10/90}$ : 15 s

#### Construction

- Body: PC (Polycarbonate)
- Filter: Stainless steel wire mesh
- Pore size: 30 µm
- Length: 34 mm (1.34")

#### Applications

- Climate control
- Dryers and humidifiers
- HVAC

#### Order code

**HA010106**

(light grey)

**HA010119**

(black)

### Stainless Steel Sintered



#### Features

- For high mechanical stress and strong pollution
- Temperature range:  
-40...+180 °C (-40...+356 °F)
- Response time  $t_{10/90}$ : 30 s

#### Construction

- Material: Stainless steel sintered
- Pore size: 10 µm
- Length: 33 mm (1.30")

#### Applications

- Industrial process control
- Agriculture
- Life stock barns

#### Order code

**HA010103**

(plastic probes)

**HA010117**

(metal probes)

### PTFE (Polytetrafluoroethylene)



#### Construction

- Material: PTFE sintered
- Pore size: 50 µm
- Length: 33 mm (1.30")

#### Order code

HA010105

#### Features

- For very dirty, oily environment
- Temperature range:  
-40...+180 °C (-40...+356 °F)
- Response time  $t_{10/90}$ : 14 s

#### Applications

- Industrial process control
- Chemical industry
- Very polluted environment

### Metal Grid for EE08 only, Polycarbonate Body



#### Construction

- Body: PC (Polycarbonate)
- Filter: Stainless steel wire mesh
- Pore size: 30 µm
- Length: 25 mm (1")

#### Order code

HA010113

#### Features

- For high RH/condensing environment
- Low mechanical stress
- Low pollution level
- Temperature range:  
-40...+120 °C (-40...+248 °F)
- Response time  $t_{10/90}$ : 15 s

#### Applications

- Meteorology, outdoor
- Climate control

### Stainless Steel Grid, Stainless Steel Body, up to 180 °C (356 °F)



#### Construction

- Body: Stainless steel
- Filter: Stainless steel wire mesh
- Pore size: 30 µm
- Length: 39 mm (1.54")

#### Order code

HA010109

#### Features

- For high RH/condensing environment
- Low mechanical stress
- Low pollution level
- Temperature range:  
-40...+180 °C (-40...+356 °F)
- Response time  $t_{10/90}$ : 15 s

#### Applications

- Industrial process control
- Clean rooms

### PTFE (Polytetrafluoroethylene), Stainless Steel Body



#### Construction

- Body: Stainless steel
- Filter: PTFE membrane, replaceable
- Pore size: 2 µm
- Length: 39 mm (1.54")

#### Order code

**HA010114**  
(complete filter)

**HA010114ME**  
(PTFE membrane)

#### Features

- For high RH / condensing environment
- High pollution level
- Temperature range: -40...+180 °C (-40...+356 °F)
- Response time  $t_{10/90}$ : 14 s
- Water ingress pressure >0.5 bar (>7.25 psi)

#### Applications

- For EE260, HTS801-T28 in:
  - Meteorology, outdoor
  - Climate control
  - Highly humid environments

### Catalytic for H<sub>2</sub>O<sub>2</sub> (Hydrogen Peroxide) Sterilisation



#### Construction

- Material: PTFE (Polytetrafluoroethylene) sintered
- Pore size: 50 µm
- Length: 33 mm (1.30")

#### Order code

**HA010115**

#### Features

- Catalytic filter for H<sub>2</sub>O<sub>2</sub> environment
- Temperature range: -40...+180 °C (-40...+356 °F)
- Response time  $t_{10/90}$ : 14 s

#### Applications

- Pharma
- Biotech
- Sterilization with H<sub>2</sub>O<sub>2</sub>

### Moisture in Oil Sensors with Probe Diameter 12 mm (0.47")

#### Stainless Steel, for Flow <1 m/s (3.3 ft/s)



#### Construction

- Material: Stainless steel
- Perforation: Ø3 mm (0.12")
- Length: 32 mm (1.26")

#### Order code

**HA010110**

#### Features

- For moisture in oil measuring devices
- For flow <1 m/s (3.3 ft/s)

#### Applications

- Hydraulic, lubrication and isolation oil monitoring

#### Stainless steel, for Flow >1 m/s (3.3 ft/s)



#### Construction

- Material: Stainless steel
- Perforation: Ø1.5 mm (0.06")
- Length: 32 mm (1.26")

#### Order code

**HA010111**

#### Features

- For moisture in oil measuring devices
- For flow >1 m/s (3.3 ft/s)

#### Applications

- Hydraulic, lubrication and isolation oil monitoring

EE872 CO<sub>2</sub> Probe with Ø25 mm (0.98")

PTFE (Polytetrafluoroethylene)



Features

- Standard filter for EE872 CO<sub>2</sub> probe
- Temperature range: -40...+60 °C (-40...+140 °F)

Construction

- Material: PTFE sintered
- Pore size: 50 µm
- Length: 62 mm (2.44")

Order code

HA010123

Applications

- Greenhouses
- Agriculture
- Outdoor CO<sub>2</sub> monitoring

Catalytic for H<sub>2</sub>O<sub>2</sub> (Hydrogen Peroxide) Sterilisation



Features

- Catalytic filter for EE872 CO<sub>2</sub> probe in H<sub>2</sub>O<sub>2</sub> environment
- Temperature range: -40...+60 °C (-40...+140 °F)

Construction

- Material: PTFE (Polytetrafluoroethylene) sintered
- Pore size: 50 µm
- Length: 62 mm (2.44")

Order code

HA010124

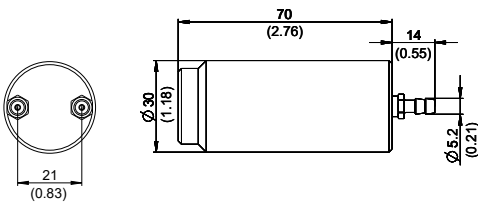
Applications

- Pharma
- Biotech
- Sterilization with H<sub>2</sub>O<sub>2</sub>

Calibration Adapter/Protection Cap



Dimensions in mm (inch)



Construction

- Material: PET (Polyethyleneterephthalate)

Order code

HA010785

Description

- Inner diameter of the attachable hose 5 mm (0.2")

Applications

- Calibration
- Sensor protection

Features

- Temperature range: -40...+60 °C (-40...+140 °F)

# Mounting Flanges

## Plastic Flange, Light Grey, Ø12 mm (0.47")



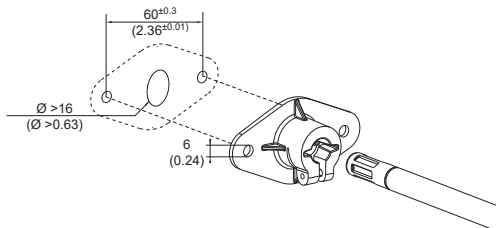
**Suitable for**

- All probes with diameter 12 mm (0.47")

**Order code**

HA010202

**Dimensions in mm (inch)**



**Features**

- Temperature range: -40...+80 °C (-40...+176 °F)
- Material: PA6-GF30 (Polyamide - glass fiber)

## Plastic Flange, Black, Ø12 mm (0.47")



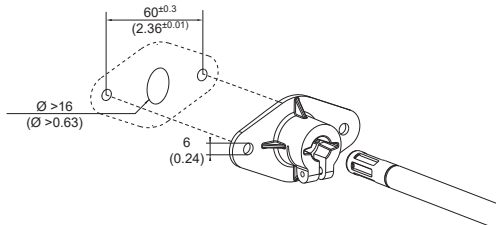
**Suitable for**

- All probes with diameter 12 mm (0.47")

**Order code**

HA010214

**Dimensions in mm (inch)**



**Features**

- Temperature range: -40...+80 °C (-40...+176 °F)
- Material: PA6-GF30 (Polyamide - glass fiber)

## Plastic Flange, Ø6 mm (0.24")



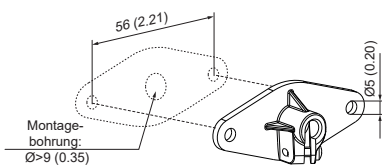
**Suitable for**

- All probes with diameter 6 mm (0.24")

**Order code**

HA401101

**Dimensions in mm (inch)**



**Features**

- Temperature range: -40...+80 °C (-40...+176 °F)
- Material: PC-GF10 (Polycarbonate - glass fiber)

Stainless Steel Flange Ø12 mm (0.47")



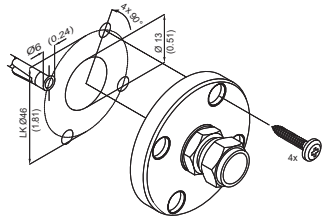
Suitable for

- All probes with diameter 12 mm (0.47")

Order code

HA010201

Dimensions in mm (inch)



Features

- Material: Stainless steel 1.4404

Stainless Steel Flange Ø25 mm (0.98")



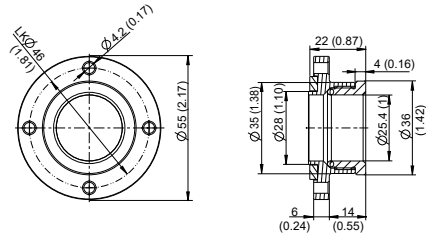
Suitable for

- EE872

Order code

HA010226

Dimensions in mm (inch)



Features

- Material: Stainless steel 1.4404

Stainless Steel Flange Ø6 mm (0.24") / Ø8 mm (0.32")



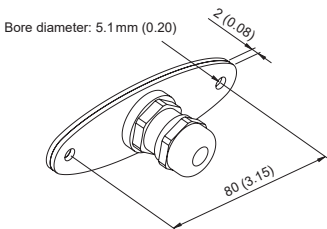
Suitable for

- All probes with diameter 6 mm (0.24")/8 mm (0.32")

Order code

HA010207

Dimensions in mm (inch)



Features

- Material: Stainless steel 1.4404



Duct Mounting Kit



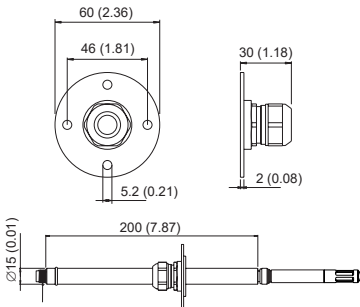
Suitable for

- EE07

Order code

HA010209

Dimensions in mm (inch)



Wall Mounting Clip Ø12 mm (0.47")



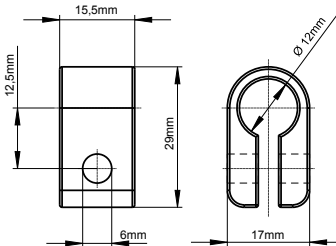
Suitable for

- All probes with diameter 12 mm (0.47")

Order code

HA010211

Dimensions in mm (inch)



Features

- Temperature range:  
-40...+60 °C (-40...+140 °F)
- Material: LDPE (Polyethylene)

Wall Mounting Clip Ø25 mm (0.98")



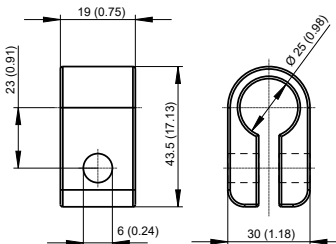
Suitable for

- EE260
- EE872

Order code

HA010227

Dimensions in mm (inch)



Features

- Temperature range: -40...+60 °C (-40...+140 °F)
- Material: LDPE (Polyethylene)

Stainless Steel Wall Mounting Clip Ø12 mm



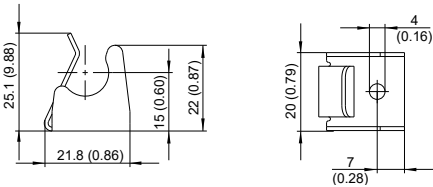
Suitable for

- All probes with diameter 12 mm (0.47")

Order code

HA010225

Dimensions in mm (inch)



Features

- Material: Stainless steel 1.4404

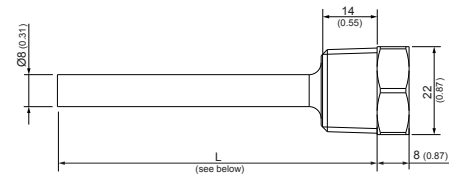
Immersion Well



Suitable for

- EE074
- EE431
- EE461
- EE462
- EE471
- HTS801-T17 (only HA400202, HA400212)

Dimensions in mm (inch)



Length (L)	Material	Order code	
		R½" ISO	½" NPT
50 mm (1.97")	Brass	HA400101	HA400111
	Stainless steel	HA400201	HA400211
100 mm (3.94")	Brass	HA400104	HA400114
	Stainless steel	HA400204	HA400214
135 mm (1.97")	Brass	HA400102	HA400112
	Stainless steel	HA400202	HA400212
285 mm (11.22")	Brass	HA400103	HA400113
	Stainless steel	HA400203	HA400213

# LC Displays

## LC Display and Cover for Retrofitting / Spare Part



Suitable for	Material	Order code
EE23	AlSi9Cu3 (Aluminium die-cast)	D03M-EE23
	PC (Polycarbonate)	D03P-EE23
EE23-T5	AlSi9Cu3	D05M-EE23T5
	PC	D05P-EE23T5
EE220	AlSi9Cu3	D07M-EE220
	PC	D07P-EE220
EE371	AlSi9Cu3	D08M-EE371
EE381	AlSi9Cu3	D08M-EE381
Sigma 05	PC	D09P

# Power Supply Unit

## Power Supply Adapter



### Suitable for

- All E+E devices with 24 V DC supply  
max: 0.625 A
- Europe / US / UK / Korea / China

### Order code

V03

### Description

- External power supply
- 100-240 V AC / 50-60 Hz 0.5 A

# Sampling Cells

## Basic Sampling Cell



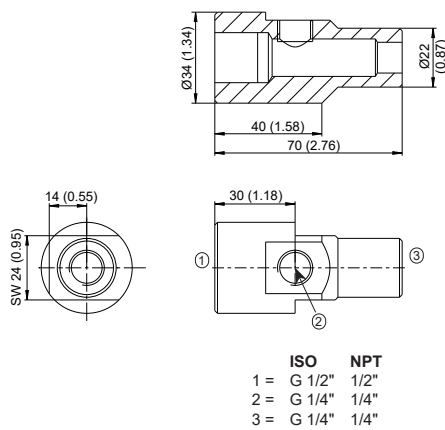
**Suitable for**

- EE354
- EE355
- EE371

**Order code**

HA050103  
(ISO)  
HA050105  
(NPT)

**Dimensions in mm (inch)**



**Description**

- The basic sampling cell is designed for a pressure range 0...64 bar (0...928 psi). It allows a simple integration of a dew point sensor into a self constructed sampling system.

## ISO Sampling Cell



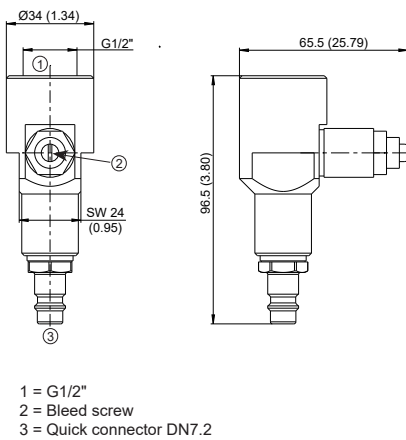
**Suitable for**

- EE354
- EE355
- EE371

**Order code**

HA050102

**Dimensions in mm (inch)**



**Description**

- The sampling cell is optimized for compressed air lines with pressure range 0...10 bar (0...145 psi). The flow of air can be adjusted with the bleed screw. The G1/2" ISO version features a quick connector suitable for standard DN7.2 air connection, which allows for the sampling cell to be mounted and removed without process interruption.

## NPT Sampling Cell



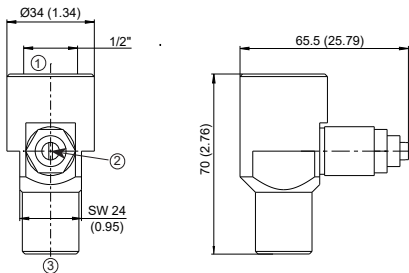
### Suitable for

- EE354
- EE355
- EE371

### Order code

HA050107

### Dimensions in mm (inch)



- 1 = G1/2"  
2 = Bleed screw  
3 = Quick connector DN7.2

### Description

- The sampling cell is optimized for compressed air pipes with pressure range 0...10 bar (0...145 psi). The flow of air can be adjusted with the bleed screw.

## Sampling Cell for Atmospheric Dew Point



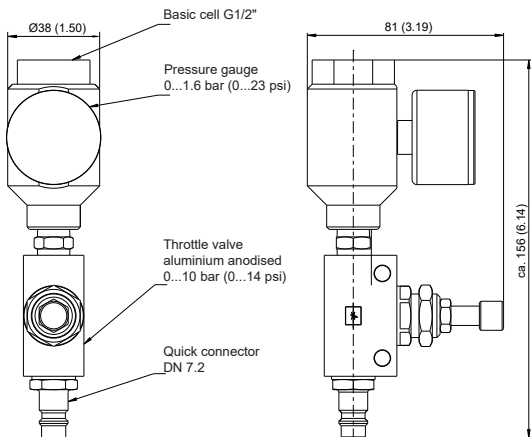
### Suitable for

- EE354
- EE355
- EE371

### Order code

HA050106

### Dimensions in mm (inch)



### Description

- The sampling cell is optimized for measuring the atmospheric dew point temperature in compressed air lines with pressure range 0...10 bar (0...145 psi). It features a quick connector suitable for standard DN7.2 air connection, which allows for the sampling cell to be mounted and removed without process interruption. The pressure in the sampling cell could be zeroed by the needle valve.

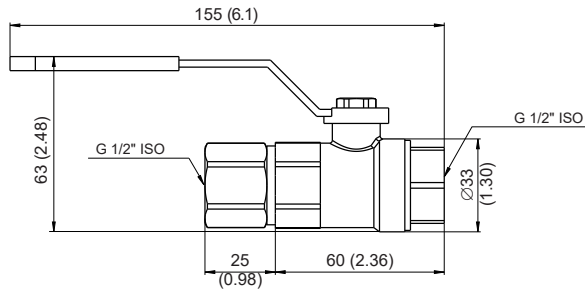
Ball Valve G 1/2" ISO



Suitable for  
▪ MOP301-T10

Order code  
HA050101

Dimensions in mm (inch)



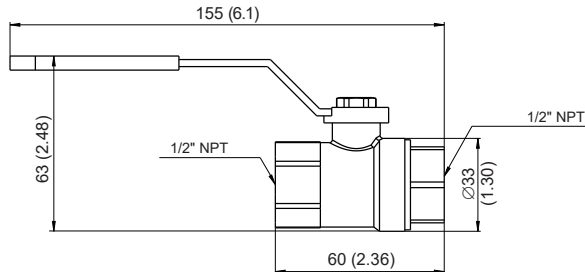
Ball Valve 1/2" NPT



Suitable for  
▪ MOP301-T10

Order code  
HA050104

Dimensions in mm (inch)



# Drip Water Protection

In applications with high humidity and condensation or for outdoor use, sensor probes should be protected against dripping water.

## Drip Water Protection



**Suitable for**

- All probes with diameter 12 mm (0.47")

**Order code**

HA010503

**Description**

- Protection cap diameter 85 mm (3.35"), fixing onto the sensing probe by cable gland.

# Protection Caps

## Protection Cap for 12 mm (0.47") Probes



**Suitable for**

- All probes with diameter 12 mm (0.47")

**Order code**

HA010783

**Description**

- Sensing head protection during site cleaning and sterilization
- Temperature range: -40...+80 °C (-40...+176 °F)
- Length: 50.4 mm (1.98")
- Diameter: 12.5 mm (0.49")

## Protection Cap



**Suitable for**

- M12 socket

**Order code**

HA010781

## Protection Cap



**Suitable for**

- M12 plug

**Order code**

HA010782

# Radiation Shields

For outdoor applications the measuring probes shall be equipped with a radiation shield which provides protection from rain, snow and ice. This causes also a natural ventilation which largely prevents overheating of the sensing probe in the sun and thus a distortion of the measured values. All E+E radiation shields are suitable for wall and pole mount.

## Radiation Shields for Probes with Diameter 12 mm (0.47")

With supporting plate



Suitable for

- EE210-T13
- EE212-T13

Order code

HA010501

With fixed clamping ring (M20x1.5)



Suitable for probes with Ø12 mm (0.47")

- EE07
- EE08-E8
- EE072
- HTP201

Suitable for remote sensing probes

- EE23
- EE210
- EE310
- HTS801-T17 (RH probe)

Order code

HA010502

With screw-in thread (M16x1.5) and additional cable gland for probes with Ø6 mm (0.24")



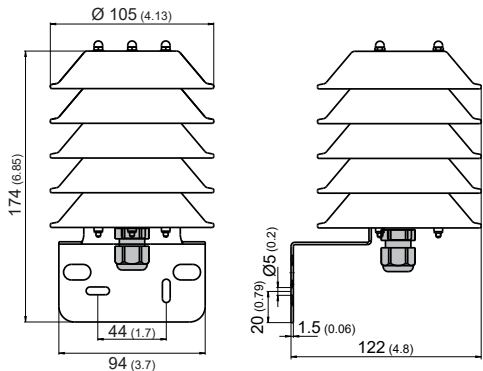
Suitable for

- EE08-E11
- HTS801-T17 (T probe)

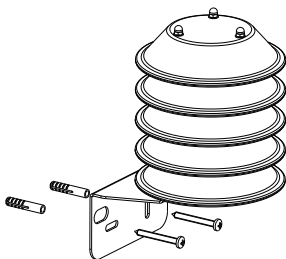
Order code

HA010506

## Dimensions in mm (inch)

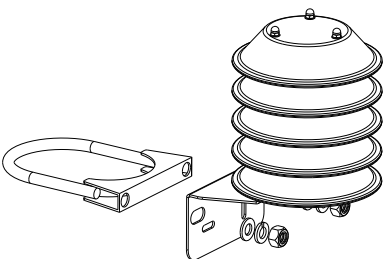


## Wall mount



## Pole mount

34 - 68 mm (1.3 - 2.7")





## Radiation Shield for EE872

**Suitable for**

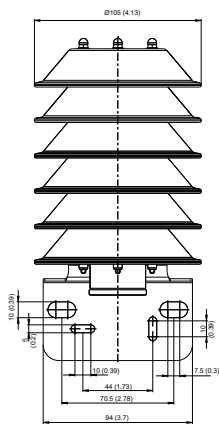
- EE872

**Order code**

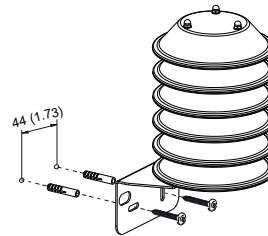
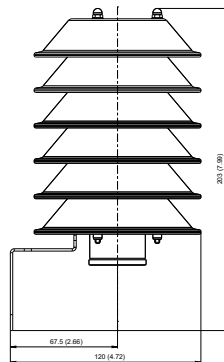
HA010510



**Dimensions in mm (inch)**

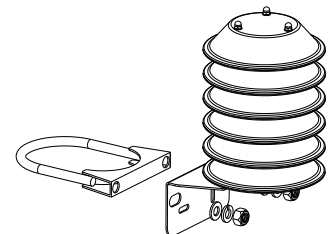


### Wall mount



### Pole mount

**34 - 68 mm (1.3 - 2.7")**



## Radiation Shield with Artificial Ventilation for EE260

Suitable for

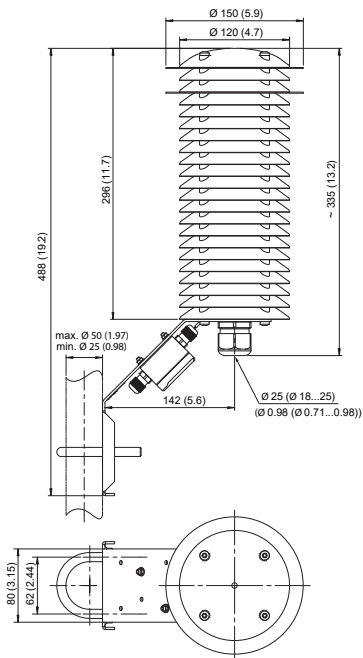
- EE260

Order code

HA010511

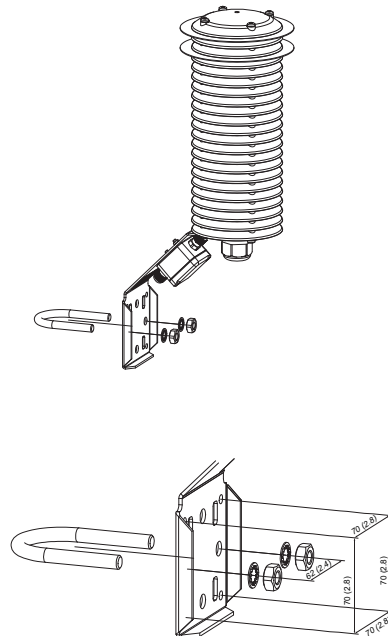


### Dimensions in mm (inch)



### Pole mount

34 - 68 mm (1.3 - 2.7")



### Power Supply

External power supply for ventilator is required.

- Supply voltage: 9.5...13.2 V DC
- Power consumption: 1.4 W (max. 1.8 W)

Radiation Shield with Artificial Ventilation



Suitable for

- HTS801-T28

Order code

HA010508

Power Supply

External power supply for ventilator is required.

- Supply voltage: 9.5...13.2 V DC
- Power consumption: 1.4 W (max. 1.8 W)

# Mounting and Connection Elements

Bracket for DIN Rail Mounting



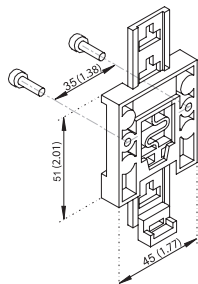
Suitable for (polycarbonate enclosure only)

- EE23
- EE220
- EE310
- EE360
- HTS801

Order code

HA010203

Dimensions in mm (inch)



Hose Clamp Bundle, Metal 330 mm (13")



Suitable for

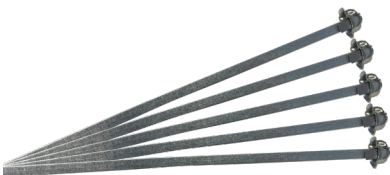
- EE461
- EE462
- EE471

Bestellcode

HA402102

Dimension in mm (inch)

- Length: 330 (13)



Description

- Material: DX 52 D+Z 275 MA (Sendzimir galvanised)
- Material caps, inner part and screws:  
ST 12 blue galvanised (galvanised steel)
- 1 packaging unit: 5 pieces

Conduit Adapter, Stainless Steel



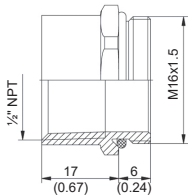
Suitable for

- Devices with cable gland M16x1.5

Order code

HA011101

Dimension in mm (inch)



Description

- Adapter M16x1.5 auf 1/2" NPT  
(US conduit fitting)

Conduit Adapter, Plastic



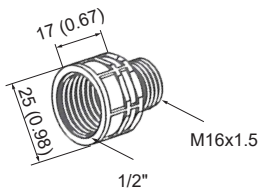
Suitable for

- Devices with cable gland M16x1.5

Order code

HA011110

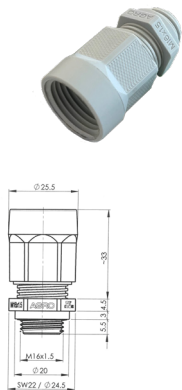
Dimensions in mm (inch)



Description

- Adapter M16x1.5 to 1/2" NPT  
(US conduit fitting)

Sealing Plug Conduit Adapter M16x1,5, Plastic



Suitable for

- Devices with cable gland M16x1.5

Order code

HA011113

Description

- Cable sealing included
- RAL7035 UL
- Material: PA6/CR

Mounting Set for EE680



Suitable for

- EE680

Order code

HA011601

Description

- Sheet metal wall mounting set for EE680 consisting of:
  - Counter plate
  - Sealing gasket
  - Two screws M5x16

Sealing Plug M12, Stainless Steel



Suitable for

- EE680

Order code

HA011602

Description

- Stainless steel M12 sealing plug to protect the electrical connection in case of site cleaning where it is necessary to remove EE680.

Pressure Tight Feedthrough



Suitable for

- HTS801-M1T17
- HTS801-M4T7

Description

- For probes with diameter 12 mm (0.47"), probe assembly up to 20 bar (300 psi)
- For probes with diameter 6 mm (0.24"), probe assembly up to 20 bar (300 psi)

Order code

HA011102  
(1/2" ISO)  
HA011103  
(1/2" NPT)

HA011104  
(1/2" ISO)  
HA011105  
(1/2" NPT)

Pressure Connection Set



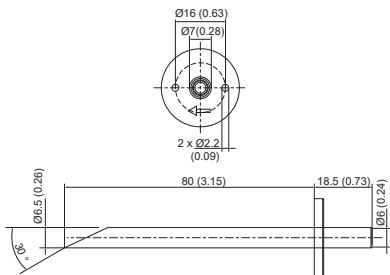
Suitable for

- EE600
- EE610

Order code

HA011304

Dimensions in mm (inch)



Description

- 2 m (78.7") PVC hose with two ABS pressure connection nipples

# Reference Probes

Reference Probe



Suitable for

- EE220

Order code

HA010403

Description

- EE07 probes with fix output values for checking the EE220 (test report included):
  - Probe 1: 90 %RH/5 °C (41 °F)
  - Probe 2: 10 %RH/45 °C (113 °F)

Reference Probe Modbus RTU



Suitable for

- Sigma 05

Order code

HA010406

Description

- Probe with fix output values for checking the Sigma 05
- Fix values freely configurable via PCS10 (available at [www.epluse.com/pcs10](http://www.epluse.com/pcs10)) and configuration adapter HA011018

# Interface Cables

## RS232 Interface Cable



**Suitable for**

- EE371
- EE381

**Order code**

HA010304

**Description**

- RS232 interface cable:
  - PC side: DB9 socket for RS232 COM port
  - Sensor side: 6 poles wire to board connector
- Cable length: 2 m (6.6 ft)

## RS232 to E2



**Suitable for**

- EE07

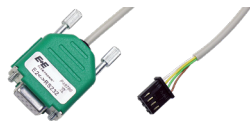
**Order code**

HA011001

**Description**

- RS232 to E2 converter:
  - PC side: DB9 socket for RS232 COM port
  - EE07 side: M12 socket, 4 poles
- Cable length: 2 m (6.6 ft)

## RS232 to E2



**Suitable for**

- EE03

**Order code**

HA011002

**Description**

- RS232 to E2 converter:
  - PC side: DB9 socket for RS232 COM port
  - EE03 side: 4 poles wire to board connector
- Cable length: 2 m (6.6 ft)

RS232 to E2



Suitable for

- EE08

Order code

HA011005

Description

- RS232 to E2 interface adapter for EE08 adjustment and test
- Connections:
  - PC side:DB9 socket for RS232 COM port
  - EE08 side:
    - For EE08-E8 (cable version): screw terminals
    - For EE08-E11 (connector version): cable
    - 2 m (6.6 ft) with M12 socket
- External power supply is required (power adapter not in the scope of supply)  
See EE08 datasheet at [www.epluse.com/ee08](http://www.epluse.com/ee08) for the correct power supply voltage according to the EE08 model.

USB to RS232



Suitable for

- E+E devices with RS232 interface

Order code

HA020110

Description

- High speed converter from USB to RS232 DB9 (plug)
- Microsoft WHQL approved



# Converters and Configuration Adapters

## Modbus Configuration Adapter



### Suitable for

- EE354
- EE355
- EE364
- EE072
- EE074
- EE260 (with configuration cable HA011020)
- EE671-T15
- EE680
- EE872
- HTP501
- MOP301
- HA010406

### Order code

HA011013

HA011018

### Description

- For test and configuration including power supply adapter:
  - PC side: USB stick
  - Sensor side: M12 socket, 4 poles

## USB-C Configuration Stick



### Suitable for

- CDS201 digital
- EE160
- EE210
- EE211
- EE212
- EE4x1 digital
- EE600
- EE610
- EE650
- EE660
- EE820
- EE850
- HTS201 digital
- TES201 digital

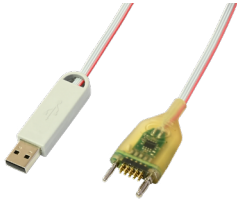
### Order code

HA011070

### Description

- Refer to [datasheet HA011070](#) USB-C Configuration Stick

### USB Configuration Adapter



#### Suitable for

- EE431 with display
- EE451 with display

#### Order code

HA011023

#### Description

- For test and configuration:
  - PC side: USB stick
  - Sensor side: 10 poles wire to board connector

### EE-PCA Product Configuration Adapter



#### Suitable for

- See EE-PCA datasheet

#### Order code

EE-PCA

[https://www.epluse.com/fileadmin/data/product/eezca/datasheet\\_EE-PCA.pdf](https://www.epluse.com/fileadmin/data/product/eezca/datasheet_EE-PCA.pdf)

### Configuration Cable for EE260



#### Suitable for

- EE260

#### Order code

HA011020

#### Description

- For test and configuration of EE260 in combination with Modbus configuration adapter HA011018
  - HA011018 side: M12 plug 4 poles
  - EE260 side: M12 socket 8 poles

### CAN Configuration Adapter for EE072 (CAN Version)



#### Suitable for

- EE072 (CAN version)

#### Order code

HA011021

#### Description

- For test and configuration including power supply adapter:
  - PC side: USB stick
  - Sensor side: M12 socket 5 poles

Connection Cable for EE072 (CAN Version)



Suitable for

- EE072 (CAN version)

Order code

HA010850

Description

- M12 socket 5 poles (with embedded 120 Ω termination resistor, yellow connector): EE072 side
- M12 plug 5 poles (black connector): other devices
- Length 1.8 m (5.9 ft), colour cable violet

Y-style splitter M12 - M12



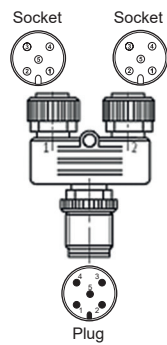
Suitable for

- All sensors and cables with M12, 4/5 poles

Order code

HA030204

Connectors

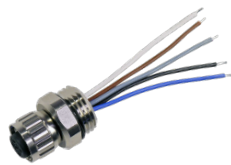


Description

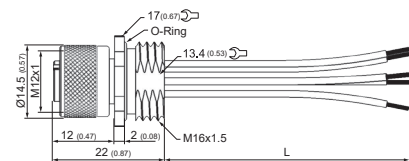
- M12 splitter, 1 plug ↔ 2 sockets for M12, 5 poles

# Connectors

## Flange Coupling Socket, 5 Poles



### Dimensions in mm (inch)



- L = 50 mm (2") ±3 mm (0.12")

### Suitable for

- All probes with M12 plug 4/5 poles

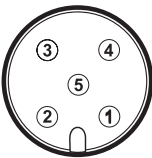
### Order code

HA010705

### Description

- M12x1 flange coupling with flying leads

### Connection diagram



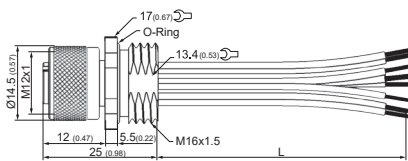
M12 socket  
front view

Pin	Colour
1	Brown
2	White
3	Blue
4	Black
5	Grey

## Flange Coupling Socket, 8 Poles



### Dimensions in mm (inch)



- L = 200 mm (2") ±5 mm

### Suitable for

- All probes with M12 plug 8 poles

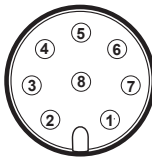
### Order code

HA010703

### Description

- M12x1 flange coupling with flying leads.

### Connection diagram



M12 socket  
front view

Pin	Colour
1	White
2	Brown
3	Green
4	Yellow
5	Grey
6	Pink
7	Blue
8	Red

Connector, 4 Poles Socket



Suitable for

- All sensors with M12 plug 4 poles

Order code

HA010707

Description

- M12x1 cable connector, 4 poles, IP67 (NEMA 4), for self assembly.

Connector, 5 Poles Socket



Suitable for

- All sensors with M12 plug 5 poles

Order code

HA010708

Description

- M12x1 cable connector, 5 poles, IP67 (NEMA 4), for self assembly

Connector, 8 Poles Socket



Suitable for

- All sensors with M12 plug 8 poles

Order code

HA010704

Description

- M12x1 cable connector, 8 poles, IP67 (NEMA 4), for self assembly

Connector, 5 Poles Plug



Suitable for

- All sensors with M12 socket 5 poles

Order code

HA010706

Description

- M12x1 cable connector, 5 poles, IP67 (NEMA 4), for self assembly.

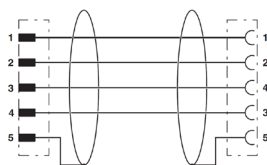
# Connection Cables

## Connection Cable Shielded Plug/Socket M12x1, 5 Poles



Suitable for	Order code
▪ EE07 with EE220	<b>HA010801</b> (2 m/6.6 ft) <b>HA010802</b> (5 m/ 16.4 ft) <b>HA010803</b> (10 m/ 16.4 ft)

### Connection diagram



### Description

- 5 poles, M12x1 plug ↔ socket, shielded (shield connected to pin 5), PUR (Polyurethane)

### Feature

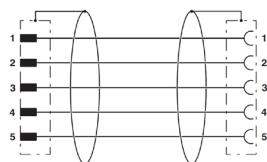
- Temperature range: -40...+80 °C (-40...+176 °F)

## Connection Cable Shielded Plug/Socket M12x1, 5 Poles



Suitable for	Order code
▪ EE771	<b>HA010816</b> (2 m/6.6 ft)
▪ EE772	<b>HA010817</b> (5 m/ 16.4 ft)
▪ EE776	<b>HA010818</b> (10 m/32.8 ft)

### Connection diagram



### Description

- 5 poles, M12x1 plug ↔ socket, shielded, PUR (Polyurethane)

### Feature

- Temperature range: -40...+80 °C (-40...+176 °F)

Connection Cable Unshielded Plug / Socket, M12x1, 4/5 Poles



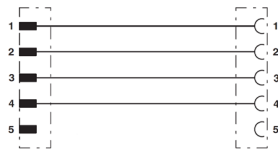
4 poles



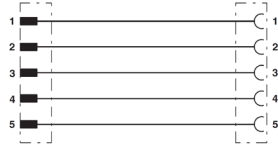
5 poles

Connection diagram

HA010826



HA010813, HA010814, HA010815



Suitable for	Description	Order code
▪ EE100Ex-T23	▪ M12 connecting cable, 4 poles, M12x1 plug ↔ socket, unshielded, PUR (Polyurethane)	<b>HA010826</b> (2 m / 6.6 ft)
▪ Omniport 40 with hand-held probes	▪ M12 connecting cable, 5 poles, M12x1 plug ↔ socket, unshielded, PUR (Polyurethane)	<b>HA010813</b> (2 m / 6.6 ft)
▪ Sigma 05	▪ M12 connecting cable, 5 poles, M12x1 plug ↔ socket, unshielded, PUR (Polyurethane)	<b>HA010813</b> (2 m / 6.6 ft) <b>HA010814</b> (5 m / 16.4 ft) <b>HA010815</b> (10 m / 32.8 ft)

Feature

- Temperature range: -25...+85 °C (-13...+185 °F)

Connection Cable for Omniport 40



Suitable for

- Omniport 40 with process probes

Order code

**HA040908**  
(1 m / 3.3 ft)

Description

- Connection cable, 5 poles unshielded, PUR (Polyurethane)
- Omniport 40 side: M12 x 1 plug with integrated voltage converter
- Process probe side: M12 x 1 socket

Connection Cable M12x1 Socket 5 Poles /Free Cable Ends



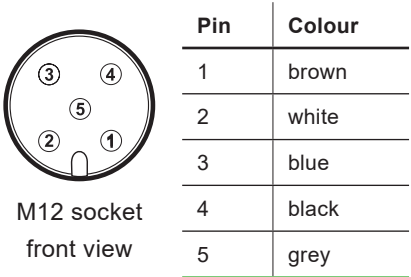
Suitable for

- All sensors with M12 plug, 4/5 poles

Order code

- HA010819**  
(1.5 m/4.9 ft)
- HA010820**  
(5 m/16.4 ft)
- HA010821**  
(10 m/32.8 ft)

Connection diagram



Description

- 5 poles, M12x1 socket ↔ free cable ends, shielded, PUR (Polyurethane)

Feature

- Temperature range: -40...+80 °C (-40...+176 °F)

Connection Cable Socket 4 Poles /Free Cable Ends , Angled 90°



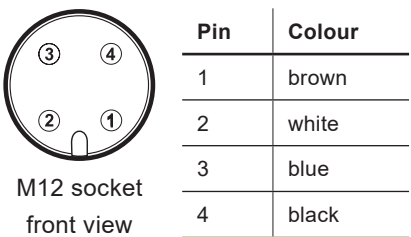
Suitable for

- All sensors with M12 plug, 4 poles

Order code

- HA010824**  
(2 m/6.6 ft)

Connection diagram



Description

- 4 poles, M12x1 socket, angled 90°

Feature

- Temperature range: -40...+80 °C (-40...+176 °F)



## Connection Cable Socket 8 Poles/Free Cable Ends



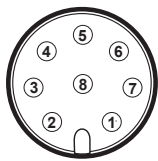
### Suitable for

- All sensors with M12 plug 8 poles

### Order code

- HA010322**  
(1.5 m / 4.9 ft)
- HA010323**  
(3 m / 9.8 ft)
- HA010324**  
(5 m 16.4 ft)
- HA010325**  
(10 m / 32.8 ft)

### Connection diagram



M12 socket  
front view

Pin	Colour
1	white
2	brown
3	green
4	yellow
5	grey
6	pink
7	blue
8	red

### Description

- 8 poles, M12x1 socket ↔ free cable ends, shielded, PUR (Polyurethane)

### Feature

- Temperature range: -40...+80 °C (-40...+176 °F)

## Sensor Connecting Cable, Socket 5 Poles/Free Cable Ends with Ferrules



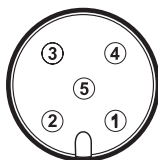
### Suitable for

- EE671

### Order code

- HA010831**  
(0.5 m / 1.64 ft)
- HA010832**  
(2 m / 6.56 ft)

### Connection diagram



M12 socket  
front view

Pin	Colour
1	grey
2	brown
3	green
4	yellow
5	white

### Description

- 5 poles, M12x1 socket ↔ free cable ends with ferrules, PVC (Polyvinylchloride)

### Feature

- Temperature range moving:  
-25...+70 °C (-13...+158 °F)
- Temperature range not moving:  
-40...+80 °C (-40...+176 °F)

## USB-C to USB-A Cable



### Suitable for

- HTS801
- Sigma 05
- HA011070 USB-C configuration stick

### Description

- Connections:
  - PC side: USB-A
  - Sensor side: USB-C
- Length 1.8 m (5.9 ft)

### Order code

- HA010327**



Company Headquarters &  
Production Site

**E+E Elektronik Ges.m.b.H.**  
Langwiesen 7  
4209 Engerwitzdorf | Austria  
T +43 7235 605-0  
F +43 7235 605-8  
info@epluse.com  
www.epluse.com

Subsidiaries

**E+E Sensor Technology (Shanghai) Co., Ltd.**  
T +86 21 6117 6129  
info@epluse.cn

**E+E Elektronik France SARL**  
T +33 4 74 72 35 82  
info.fr@epluse.com

**E+E Elektronik Deutschland GmbH**  
T +49 6171 69411-0  
info.de@epluse.com

**E+E Elektronik India Private Limited**  
T +91 990 440 5400  
info.in@epluse.com

**E+E Elektronik Italia S.R.L.**  
T +39 02 2707 86 36  
info.it@epluse.com

**E+E Elektronik Korea Ltd.**  
T +82 31 732 6050  
info.kr@epluse.com

**E+E Elektronik Corporation**  
T +1 847 490 0520  
info.us@epluse.com



—  
your partner  
in sensor  
technology.