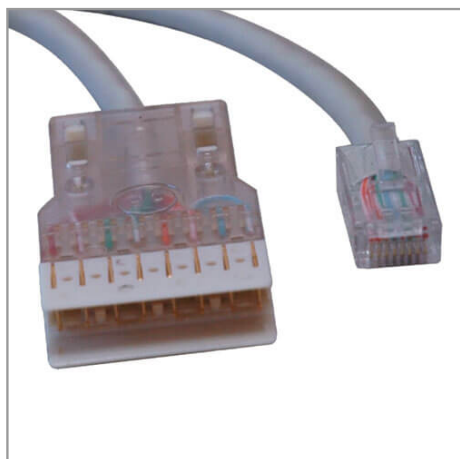


Cat5e 350 MHz (UTP) Ethernet Cable (RJ45M/110) - Gray, 25 ft. (7.62 m)

MODEL NUMBER: **N017-025-GY**



Highlights

- RJ45 to 110, 25-ft. (7.62 m)
- Easily connects to 110 Punch Down blocks
- Cat5e 100mb rated

Package Includes

25-ft. (7.62 m) RJ45 to 110 Cat5e Patch Cable

Features

- RJ45 to 110, 25-ft. (7.62 m)
- 4-pair stranded Cat5e patch cable
- Gray PVC jacket

Specifications

OVERVIEW	
UPC Code	037332142382
Technology	Cat5/5e
CONNECTIONS	
Side A - Connector 1	RJ45 (MALE)
Side B - Connector 1	110 (MALE)
PHYSICAL	
Color	Gray
Cable Shielding	UTP
Wire Type	Stranded
Cable Length (ft.)	25
Cable Length (m)	7.62
Cable Length (in.)	300
Cable Length (cm)	762

Shipping Dimensions (hwd / in.)	11.00 x 7.00 x 0.50
Shipping Dimensions (hwd / cm)	27.94 x 17.78 x 1.27
Shipping Weight (lbs.)	0.75
Shipping Weight (kg)	0.34
FEATURES & SPECIFICATIONS	
Snagless Connector	No
WARRANTY & SUPPORT	
Product Warranty Period (Worldwide)	Lifetime limited warranty

1000 Eaton Boulevard
Cleveland, OH 44122
United States
<https://tripplite.eaton.com>

© 2025 Eaton. All Rights Reserved.
Eaton is a registered trademark. All other trademarks
are the property of their respective owners.