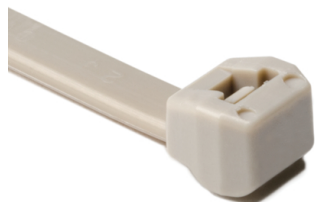


Specification Sheet

Part Number: 111-01235



Extreme temperature range for excellent performance in a range of environments.

Low-profile, contoured head takes up less space and protects sensitive wires.

Delivers the performance of a metal tie with the ease of use of plastic.

High-Temp Cable Tie, 8.7" Long, 85lb Tensile Strength, PEEK, Beige, 100/pkg

Article Number	111-01235
Type	PT220
Color	Beige (BGE)
Quantity Per	bag
Product Description	PEEK Ties withstand temperatures from -67 to 464 degrees F and provide excellent resistance to chemicals, acids, radiation and abrasion. The low-profile, contoured head takes up less space and protects sensitive wires running adjacent to it.
Short Description	High-Temp Cable Tie, 8.7" Long, 85lb Tensile Strength, PEEK, Beige, 100/pkg
Global Part Name	PT220-PEEK-BGE

Minimum Tensile Strength (Imperial)	85
Minimum Tensile Strength (Metric)	380
Length L (Imperial)	8.7
Length L (Metric)	220.0
Identification Plate Position	none
Releasable Closure	No
Tie Closure	plastic pawl
Variant	Inside Serrated
Width W (Imperial)	0.19
Width W (Metric)	4.7
Bundle Diameter Min (Imperial)	0.31
Bundle Diameter Min (Metric)	8.0
Bundle Diameter Max (Imperial)	2.2
Bundle Diameter Max (Metric)	56.0
Thickness T (Imperial)	0.05
Thickness T (Metric)	1.3

Cable Tie Head Length (Imperial)	0.28
Cable Tie Head Width (Imperial)	0.32
Material	Polyetheretherketone (PEEK)
Material Shortcut	PEEK
Flammability	UL 94 V-0
Halogen Free	Yes
UV Resistant (Yes/No)	No
Use Conditions	For Indoor and Outdoor Use
Operating Temperature	-67°F to +464°F (-55°C to +240°C)
Reach Compliant (Article 33)	Yes
ROHS Compliant	Yes
Certification/Specification	IEC EN 62275 DNV GL EN 62275:2009 Lloyd's Register IEC 62275 UL 62275
Package Quantity (Imperial)	100
Package Quantity (Metric)	100

Customs Number

3926909988

7930 N. Faulkner Road, Milwaukee, WI 53224

Phone: (800) 537-1512 | Email: corp@htamericas.com

© 2025 HellermannTyton. All Rights Reserved.

[Contact Us](#) [RoHS/WEEE Compliance](#) [Disclaimer](#) [Terms and Conditions](#)