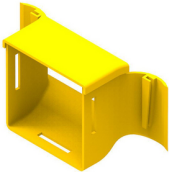




Product: [FRCU3YL](#)



Fiber Raceway Tee Break-Out, 4x4, Lid

Product Description

Fiber Raceway Tee Break-Out, 4x4, 100mm, with Lid, Yellow

Technical Specifications

Product Overview

Environmental Space:	Indoor
----------------------	--------

Construction

Weight:	0.132 lbs
Height:	4.094 in (103.988 mm)
Width:	7.952 in
Length:	3.464 in

Product Material

Materials

Material
Fire retardant plastic, Halogen free, UL94-VO rated

Related Part Numbers

Variants

Item #	Color	Length
FRCU3YL	Yellow	3.464 in

Product Notes

Notes:	The break out assembly is used to provide a safe, exit for fibre to equipment, at any point in either a 300, 220 or 100 mm ducting system. It is normally used to provide a break out in existing duct systems, and clips straight into a cut out provided by the cut out tool or made using the cut out jig. When used as described, it provides a 100 mm outlet; to which any standard 100 mm part can be fitted using either: the standard joiner or the slotless joiner which are available separately. It can also be used with vertical duct to feed patch cords down to a rack. (Used as an Trumpet Outlet).
--------	---------------------------------------------------------------------------------------------------------------------------------------------------------------------------------------------------------------------------------------------------------------------------------------------------------------------------------------------------------------------------------------------------------------------------------------------------------------------------------------------------------------------------------------------------------------------------------------------------------------------

History

Update and Revision:	Revision Number: 0.29 Revision Date: 11-09-2022
----------------------	-------------------------------------------------

© 2023 Belden, Inc

All Rights Reserved.

Although Belden makes every reasonable effort to ensure their accuracy at the time of this publication, information and specifications described here in are subject to error or omission and to change without notice, and the listing of such information and specifications does not ensure product availability.

Belden provides the information and specifications herein on an "ASIS" basis, with no representations or warranties, whether express, statutory or implied. In no event will Belden be liable for any damages (including consequential, indirect, incidental, special, punitive, or exemplary damages) whatsoever, even if Belden has been advised of the possibility of such damages, whether in an action under contract, negligence or any other theory, arising out of or in connection with the use, or inability to use, the information or specifications described herein.

All sales of Belden products are subject to Belden's standard terms and conditions of sale.

Belden believes this product to be in compliance with all applicable environmental programs as listed in the data sheet. The information provided is correct to the best of Belden's knowledge, information and belief at the date of its publication. This information is designed only as a general guide for the safe handling, storage, and any other operation of the product itself or the one that it becomes a part of. The Product Disclosure is not to be considered a warranty or quality specification. Regulatory information is for guidance purposes only. Product users are responsible for determining the applicability of legislation and regulations based on their individual usage of the product.