



**ISL Products International**

## Flexible Jaw-Type Coupling

10mm - 12mm

**MTL-CPLR-10X12**

Online ID#:

Our motor shaft couplers are an excellent accessory for any application or device. Designed for demanding applications with a flexible JAW coupling and set screw for secure clamping.

**Contact Us** for alternative solutions!



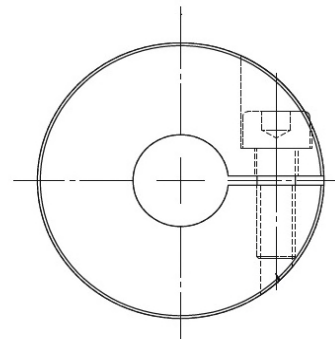
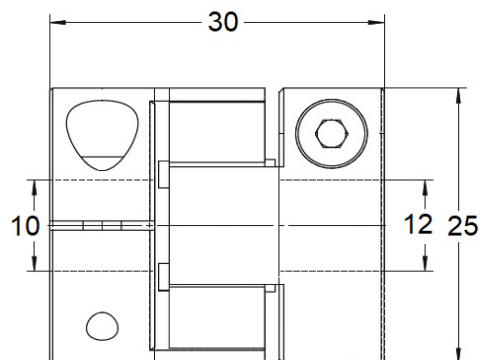
### Mechanical Specifications

Shaft Bore Diam. (A):	10mm	Max. Torque Rating:	61 kg.cm
Shaft Bore Diam. (B):	12mm	Max. Speed Rating:	15,000 rpm
Clamping Screws:	M3	Static Torsional Stiffness:	$1.0 \times 10^{-6} \text{ kg.m}^2$

### Material Specifications

Coupler Material:	Aluminum	Bushing Material:	Polyurethane
Clamping Screws:	SCM435 (12.9 grade)		

### Dimensions & Pin Out



units: mm

