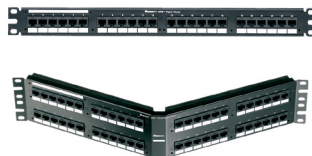


DP5e™ Punchdown Patch Panels

SPECIFICATIONS

Category 5e/Class D, punchdown patch panels shall terminate 4-pair, 22 – 26 AWG, 100 ohm unshielded twisted pair cable with an industry standard single wire 110 punchdown tool. Patch panels shall include a universal label coded for T568A and T568B wiring schemes and mount to 19" and 23" racks. Patch panels shall be easy to identify with pre-printed numbers, write-on areas and optional label kits.



TECHNICAL INFORMATION

Category 5e/Class D channel and component performance:	Exceeds channel requirements of ANSI/TIA-568-C.2 Category 5e and ISO 11801 Class D standards at swept frequencies 1 to 100 MHz Exceeds component requirements of ANSI/TIA-568-C.2 Category 5e and ISO 11801 Class D standards at swept frequencies 1 to 100 MHz
FCC and ANSI compliance:	Meets ANSI/TIA-1096-A; contacts plated with 50 microinches of gold for superior performance
IEC compliance:	Meets IEC 60603-7
PoE compliance:	Supports IEEE 802.3af, 802.3at, and IEEE 802.3bt type 3 and 4 for PoE applications up to 100 W
UL rated:	UL 1863 approved
Conductor termination range:	Compatible with 22 – 26 AWG solid or stranded IWC cable with conductor insulation diameters of 0.048 in. (1.2mm)
Mounting option:	Mounts to standard EIA 19" or 23" racks (with optional extender bracket); 12-port version can be wall mounted with optional 89D bracket
Packaging:	Includes M6 and #12-24 mounting screws

KEY FEATURES AND BENEFITS

100% Performance tested:	Confidence that each jack module will deliver the critical electrical performance requirements
Identification:	Can be clearly identified with optional labels and icons for port identification
Universal wiring scheme:	T568A and T568B wiring schemes clearly identified
Industry standard termination tool:	Single wire 110 punchdown tool (PDT110) ensures conductors are fully terminated
Individually serialized:	Each port is marked with quality control number for future traceability
RJ45 interface:	Industry standard interface provides a quick and easy plug and play connection to RJ45 patch cords; backwards compatible

APPLICATIONS

DP5e Punchdown Patch Panels are a component of the TX5500™ UTP Copper Cabling System. This end-to-end system provides Gigabit Ethernet performance with usable bandwidth beyond 100 MHz. With certified performance to the ANSI/TIA-568-C.2 Category 5e and ISO 11801 Class D Edition 2.1 standards, this system will support the following applications:

- Ethernet 10BASE-T, 100BASE-T (Fast Ethernet), 1000BASE-T (Gigabit Ethernet)
- 155 Mb/s ATM, 622 Mb/s ATM
- Token ring 4/16
- Voice/data systems
- Voice over Internet Protocol (VoIP)

DP5e Angled Punchdown Patch Panels

24-port, 1 RU:	DPA245E88TGY
48-port, 2 RU:	DPA485E88TGY

DP5e Flat Punchdown Patch Panels

12-port:	DP125E88TGY
24-port, 1 RU:	DP245E88TGY
48-port, 2 RU:	DP485E88TGY

Tools and Accessories

Wire snipping tool:	CWST
Wire stripping tool:	CJAST
Punchdown tool:	PDT110
24-port label kit:	DPLK24
48-port label kit:	DPLK48
Strain relief bar:	SRBM19BLY
Extender bracket:	PEB1
Clear dust cap:	MDC-C
Block out device:	PSL-DCJB-^+
Phone icons:	CIPW-C
Data icons:	CID^ -C

^Colors other than Red: -BL (Black), -BU (Blue), -YL (Yellow), -GR (Green), -OR (Orange), -IW (Off White) or -IG (International Gray)

^^Colors: WH (White), RD (Red), BU (Blue), YL (Yellow), GR (Green), OR (Orange)

+Add -C to indicate 100 pieces per bulk package to reduce single-use plastic



All listed part numbers are compliant with the U.S. Trade Agreements Act (TAA) for purchases shipped to customers in the United States.

DP5e™ Punchdown Patch Panels

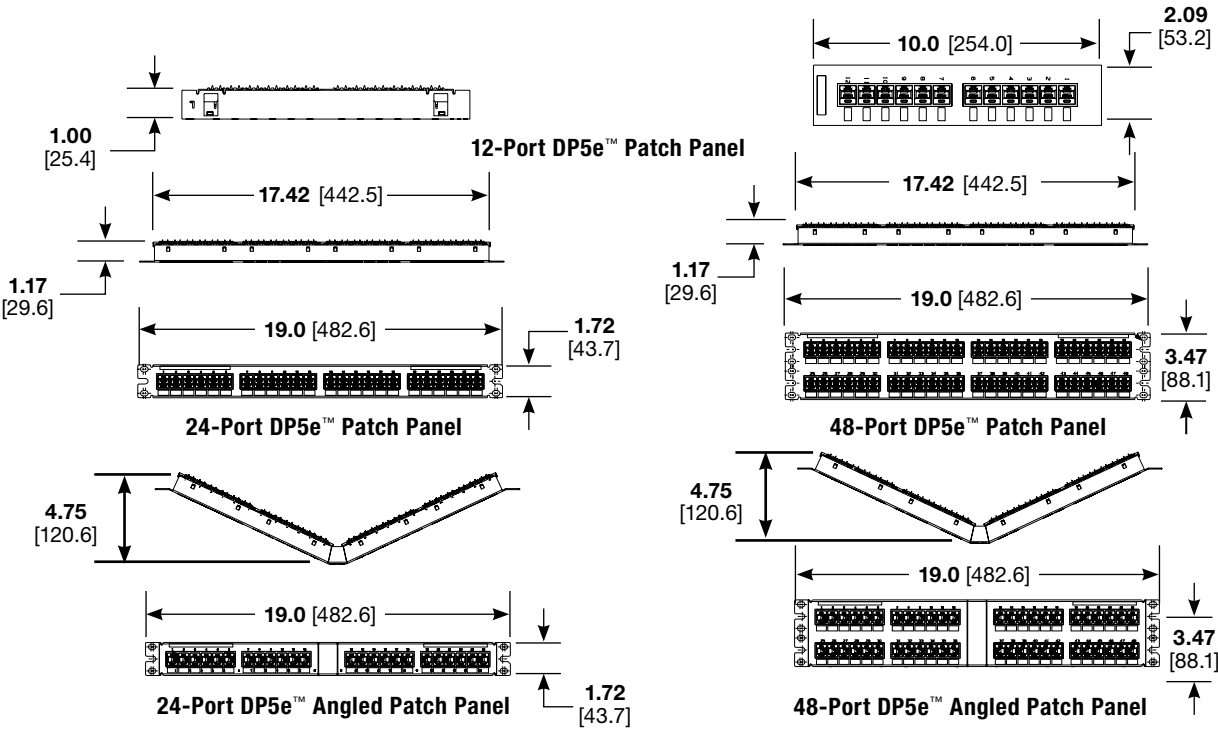
TEST RESULTS

Mechanical Test	Test Method	Measurement	Typical Test Results
Normal force	—	Load (grams)	>100
Vibration	IEC 512-6d	Circuit Resistance (mOhms)	<40
Shock	IEC 512-6c	Contact Disturbance (microseconds)	<5
Durability	IEC 512-9a	Circuit Resistance (mOhms)	<40
Mating/un-mating	IEC 512-13b	Mating Force (N)	<20
		Un-Mating Force (N)	
Termination cycles	IEC 352	Number of Cycles	>20

Electrical Test	Test Method	Measurement	Typical Test Results
Low level circuit resistance	IEC 512-2a	Resistance (mOhms)	<20
Dielectric withstand voltage	IEC 512-4a	1000 VAC, 1 minute	Passed
Insulation resistance	IEC 512-3a	Resistance (mOhms)	>500

Environmental Test	Test Method	Measurement	Typical Test Results
Temperature life	IEC 512-9b	Circuit Resistance (mOhms)	<40
Humidity	IEC 512-11c		
Thermal shock	IEC 512-11d		
Climatic sequence	IEC 512-11a		
Flowing mixed gas corrosion	IEC 512-11g		

ENGINEERING DRAWING



Dimensions are in inches. [Dimensions in brackets are metric].

WORLDWIDE SUBSIDIARIES AND SALES OFFICES

PANDUIT US/CANADA Phone: 800.777.3300	PANDUIT EUROPE LTD. London, UK Phone: 44.20.8601.7200	PANDUIT SINGAPORE PTE. LTD. Republic of Singapore Phone: 65.6305.7575	PANDUIT JAPAN Tokyo, Japan Phone: 81.3.6863.6000	PANDUIT LATIN AMERICA Guadalajara, Mexico Phone: 52.33.3777.6000	PANDUIT AUSTRALIA PTY. LTD. Victoria, Australia Phone: 61.3.9794.9020
--	---	---	--	--	---

For a copy of Panduit product warranties, log on to www.panduit.com/warranty