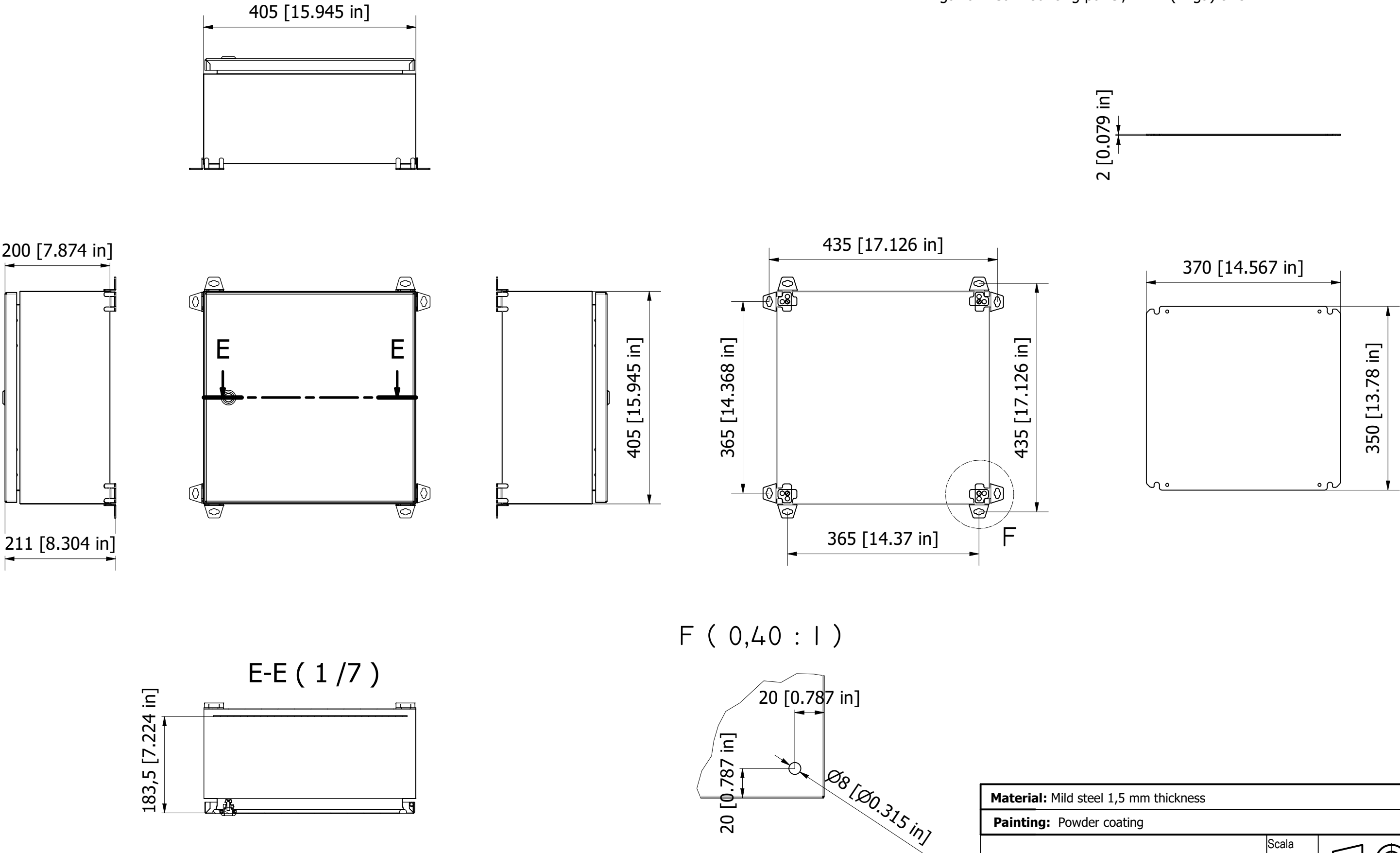


DIMENSIONS IN MM (INCHES)

Wall mounting enclosure with blind or PVC window, front door hinged, whit/without deadfront. The full-welded body is supplied with a galvanized mounting panel, 2mm (14ga) thick.



Material: Mild steel 1,5 mm thickness		
Painting: Powder coating		
TECNOMATIC: 28110	Scala 1/7	
Standard Colors: RAL7035 textured; RAL7032 upon request		
Protection category and Approvals: IP66 EN 60 529 - IK10 EN 62 262		UL/CUL type,1,12,4