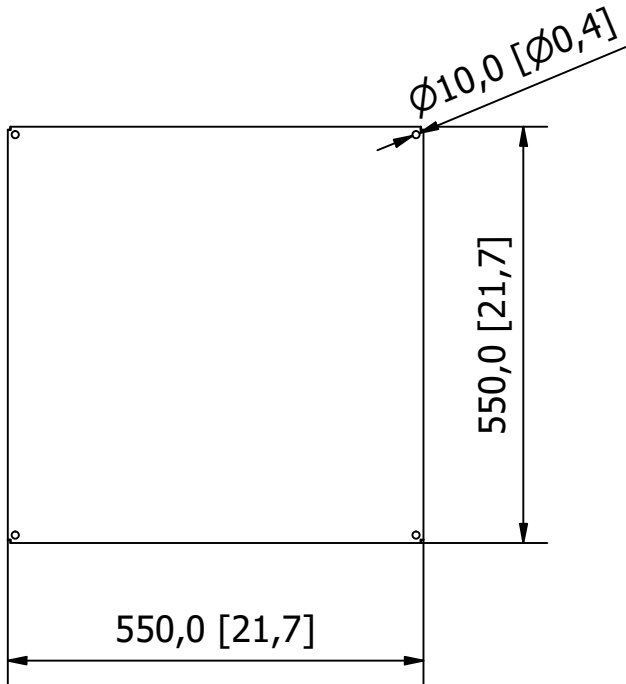
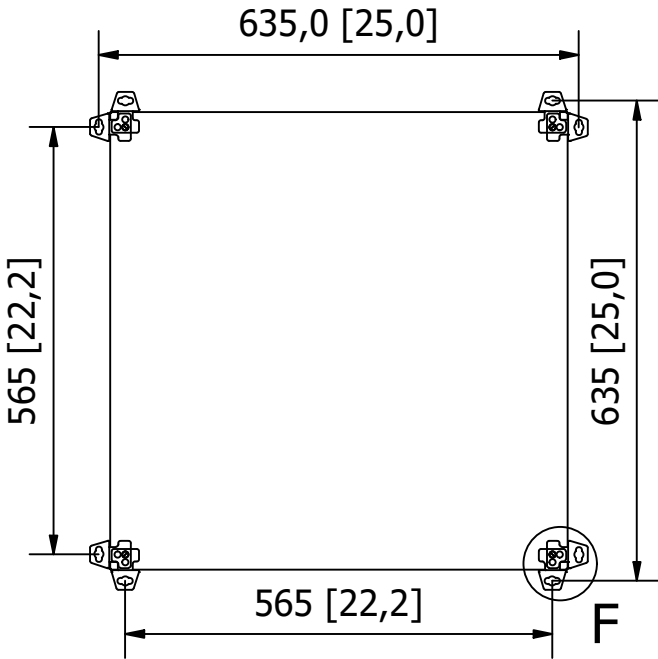
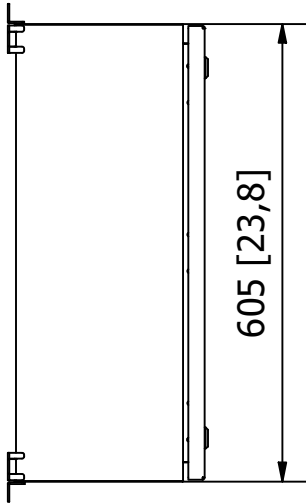
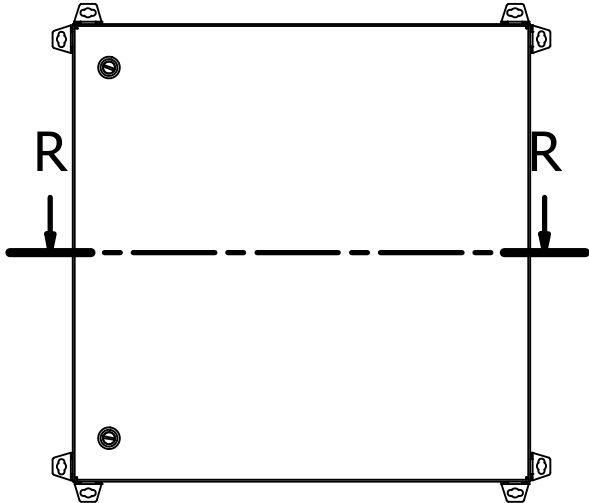
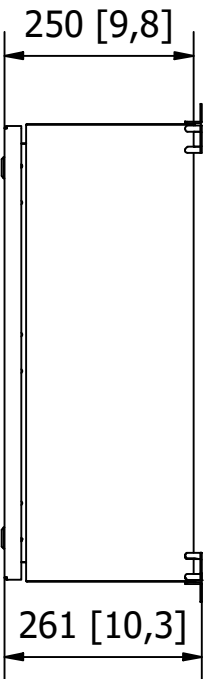
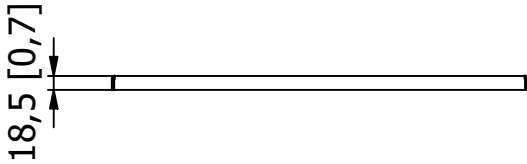
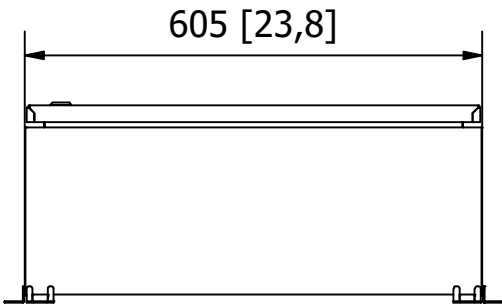


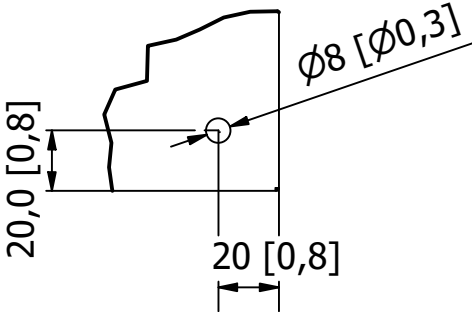
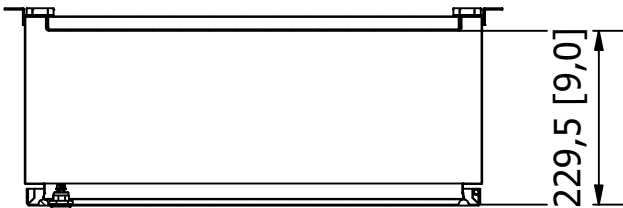
DIMENSIONS IN MM (INCHES)

Wall mounting enclosure with blind or PVC window, front door hinged, with/without deadfront.
The full-welded body is supplied with a galvanized mounting panel, 2 mm (14ga) thick.



R-R (1 /10)

F (0,40 : 1)



Material: Stainless 304, 1,5 mm thinckness (16ga) thinckness		
Painting:		
TECNOMATIC: 28177ss	Scala 1/10	
Finish: Fine scotch brite medium satin, 240 grit.		
Protection category and Approvals: IP66 EN 60 529 - IK10 EN 62 262		
UL/CuL TYPE,4x		