



Quality Products. Service Excellence.

Pivoting Rail Wall Rack *HLPB Series*



Note: This product line has been discontinued as a stocked series. Information is for reference only. It has been replaced with **VWR Series**. For alternative solution assistance, **contact Hammond here** or call: USA (716) 630-7030, Canada and International (519) 822-2960.

The HLPB is an open rack version of the **HLP** but designed for applications where security is not important. The unique, yet simple pivoting design provides quick access to the back of patch panels to ease punching down and installation.

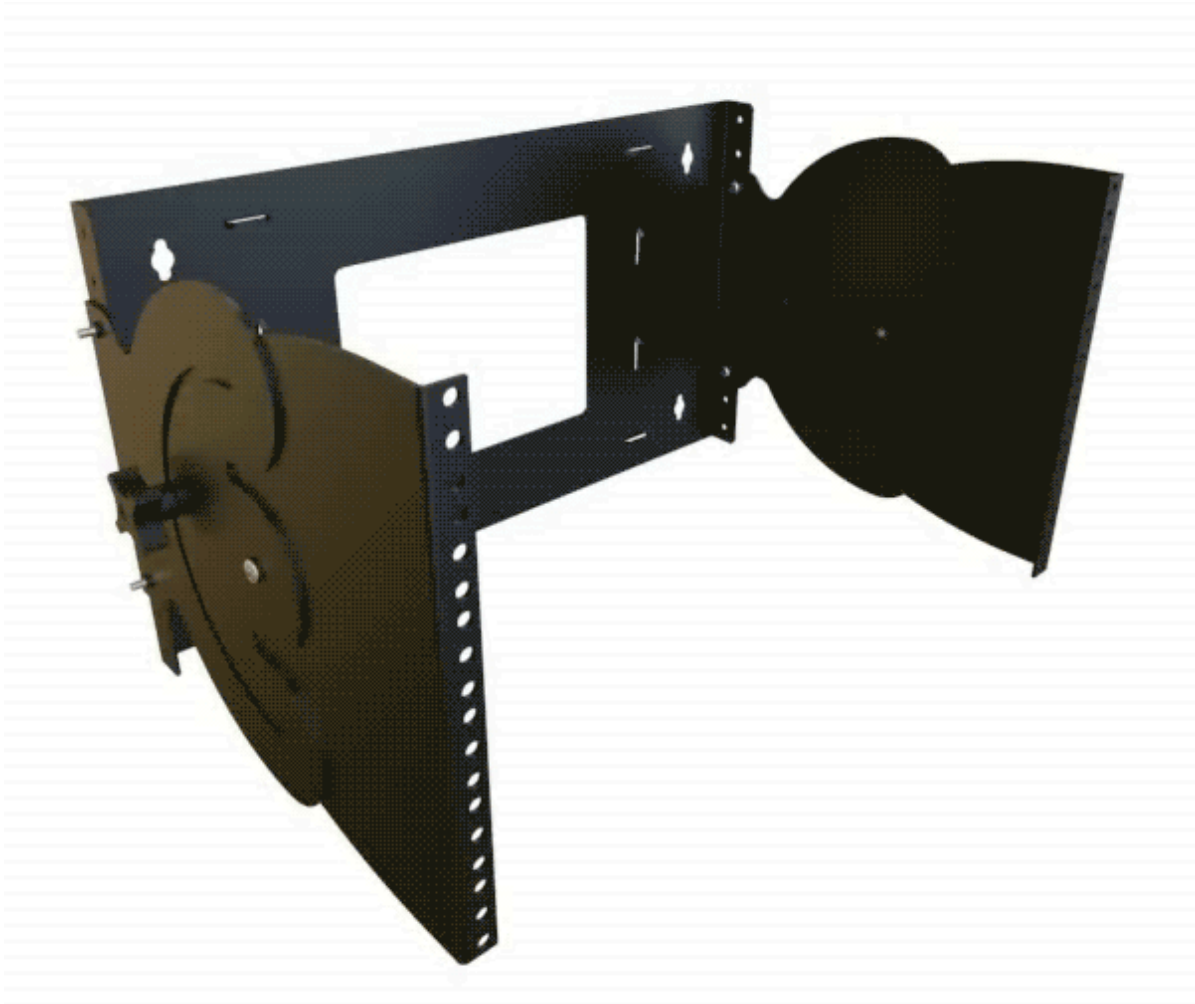
Features

- Constructed in 16-gauge steel and 14-gauge steel (rails).
- EIA compliant 19" mounting rails are punched for use with 10-32 clip nuts.
- HLPB is available in 4U, 6U and 8U sizes.
- Rails pivot 180 degrees for easy equipment mounting.
- Rear cable access with multiple tie points for cable management.
- Opening in rear is large enough for cable access and full size electrical outlet.
- Knockdown design ships unassembled for easy handling and shipping protection.
- Includes starter pack of (50) **CLPKIT1032-50** screws and clip nuts.
- 110 lbs (50 kg) **load rating**.
- Finished in smooth black powder paint.
- TAA Compliant.
- RoHS Compliant.
- Manufactured in North America.

Accessories

- Universal Rack Shelf
- Cable Managers
- Mounting Rails
- Mounting Screw and Clip Nut Combo-Pack
- Keyboard & Equipment Rack Shelf
- Rack Panels
- Hook and Loop Convenience Roll
- PDUs and Outlet Strips





Part No.	Overall Dimensions			Rack Units	Mounting Dimensions	
	Height	Width	Depth		Height	Width
HLPB194UBK	11.00	21.41	8.84	4U	7.00	19.00
HLPB196UBK	11.00	21.41	12.34	6U	10.50	19.00
HLPB198UBK	11.00	21.41	15.84	8U	14.00	19.00

Tags: **Pivot Frame, knock-down, knock down**

Data subject to change without notice

© 2025. Hammond Manufacturing Ltd. All rights reserved.