




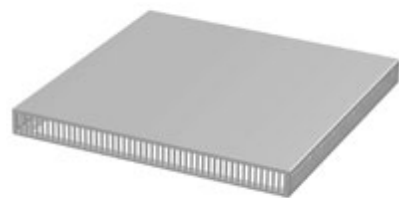
Quality Products. Service Excellence.

Vented Raised Top *IMEVRT Series*



Note: This product line has been discontinued as a stocked series. Information is for reference only. For alternative solution assistance, please **contact Hammond here** or call: USA (716) 630-7030, Canada and International (519) 822-2960.

- For use with IME, IFMD and IPC Series only.
- Provides top ventilation in enclosure.
- Cutout diagram provided.
- Comes complete with all mounting hardware.
- Finished in beige.



Part No	Fits IME/IPC/IFMD Nominal Dimension		Actual Outside Dimension		
	B (mm)	C (mm)	A	B	C
IPT64	600	400	2.00	13.13	13.75
IPT65	600	500	2.00	13.13	17.63
IPT66	600/700	600	2.00	13.13	21.63
IPT68	600/700	800	2.00	13.13	29.50
IPT84	800	400	2.00	21.63	13.75
IPT85	800/1000	500	2.00	21.63	17.63
IPT86	800/1000	600	2.00	21.63	21.63
IPT88	800/1000	800	2.00	21.63	29.50

Data subject to change without notice