
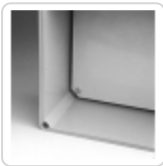




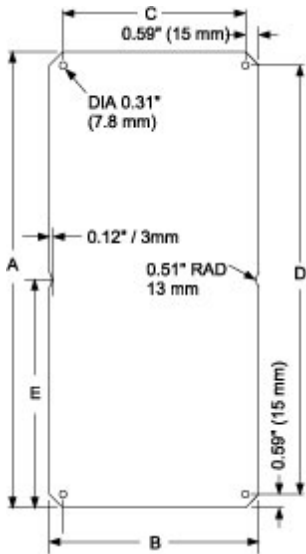
Quality Products. Service Excellence.

PB Series Inner Panel *PBP Series*

 **Note:** This product line has been discontinued as a stocked series. Information is for reference only. For alternative solution assistance, please **contact Hammond here** or call: USA (716) 630-7030, Canada and International (519) 822-2960.



- Available in steel or unfinished aluminum.
- 14 gauge steel panels are finished in white powder coating.
- Aluminum panels are 0.080" (2.03 mm) unfinished.
- Hardware to mount inner panel is included with PB series enclosures.



Steel Panel Part No.	Aluminum Panel	Fits PB Enclosure	A	B	C	D	E
PBP2718	PBPA2718	PB271818	9.06	5.51	4.33	7.88	-
PBP2727	PBPA2727	PB272718	9.06	9.06	7.88	7.88	-
PBP3627	PBPA3627	PB362718	12.60	9.06	7.88	11.42	-
PBP5427	PBPA5427	PB542718	19.69	9.06	7.88	18.51	9.84
PBP5436	PBPA5436	PB543618	19.69	12.60	11.42	18.51	9.84

Data subject to change without notice