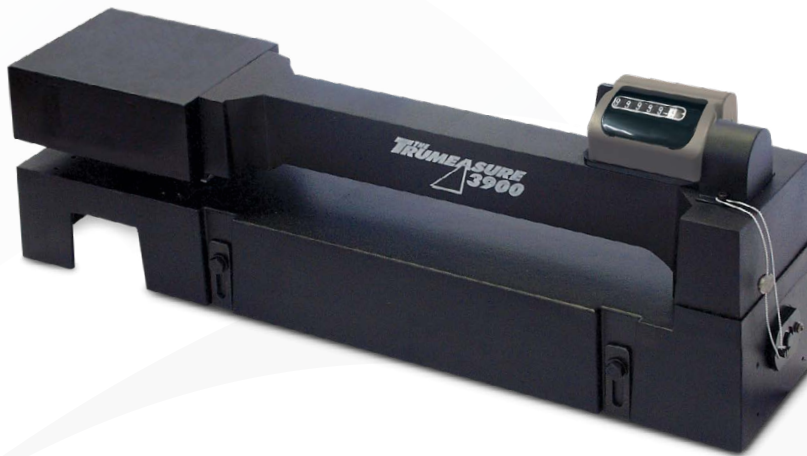


3900B

Trumasure 3900 Fabric and Carpet Measurement



The Trumasure 3900 incorporates the very best features from over 60-years experience in the specialised length measurement sector. These machines incorporate exclusive new components to ensure reliability and continuing accuracy even when operating under the most demanding conditions.

Operates as the material passes between the measuring roller and the spring loaded pressure roller. The machine is activated by the movement of the material. All Trumasure machines incorporate an integral brake to prevent overspin at the end of the piece. The brake is automatically released when a further piece of material is passed between the rollers.

Key Features

- Measures material up to 24mm (0.94in) thick
- Accommodates easily marked and/or abrasive materials (with special wheels)
- Accuracy 0.25%
- Accommodates pile up or no pile materials
- Optional encoder output
- Can be built into manufacturing and finishing processes
- Calibration certification on request at additional cost

Applications

- Manufacturing and processing of textiles, films, plastics and papers
- Fabric inspection
- Cutting to length
- Tracking of material lengths through processing

3900 Specifications

Measuring Thickness Material up to 24mm (0.94in) thick

Measuring Wheel Diameter 0.25m

Material types Wide range of materials including paper, plastics, tubber sheeting, vinyl, wallpaper, textiles and carpets

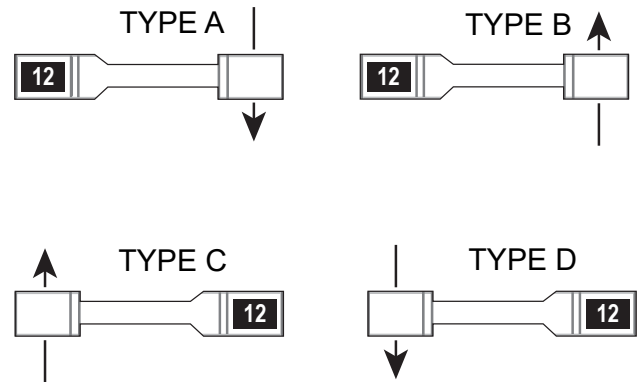
Pile Materials Pile up, pile down, no pile

Weight 8kg (17.6lb)

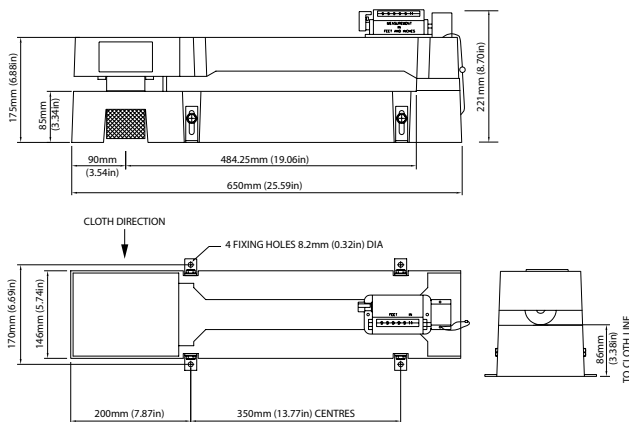
Packed Dimensions 730 x 220 x 300mm (28.7x8.6x11.8in)

Material Direction Options
A: towards the operator; counter on left
B: away from the operator; counter on left
C: away from the operator; counter on right
D: towards the operator; counter on right

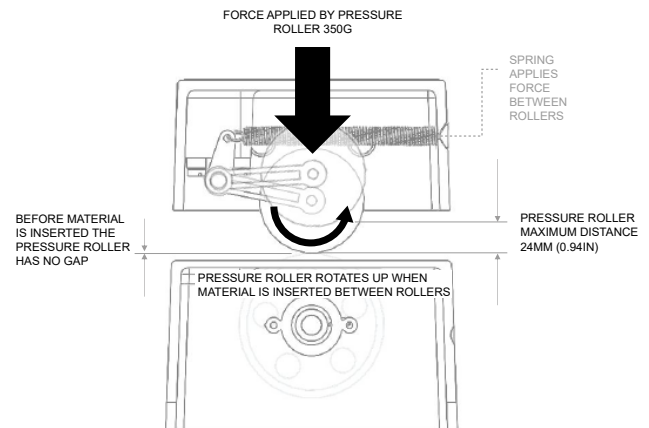
Direction Chart



Dimensions



Pressure Roller



Ordering Information

Use the part number for the unit of measurement and the type for material direction and counter position:

| | |
|----------------|--|
| 3900B | Fabric & Carpet Measurer 99999.9 Metres |
| 3905-1B | Fabric & Carpet Measurer 99999'11" Feet & Inches |
| 3905-2B | Fabric & Carpet Measurer 99999.7/8 Yards & Eighths |

TYPE A for material travelling towards the operator; counter on left
TYPE B for material travelling away from the operator; counter on left
TYPE C for material travelling away from the operator; counter on right
TYPE D for material travelling towards the operator; counter on right

EXAMPLE: 3905-1B TYPE C

| | |
|-----------------------|--|
| 3900-E / DD250 | 3900 Fabric & Carpet Measurer with 250PPR Encoder Output (electronic preset counter sold separately) |
| 3905-DD025 | 3905 Fabric & Carpet Measurer with 025PPR Encoder Output (electronic preset counter sold separately) |
| 3905-DD250 | 3905 Fabric & Carpet Measurer with 250PPR Encoder Output (electronic preset counter sold separately) |
| 3905-DD360 | 3905 Fabric & Carpet Measurer with 360PPR Encoder Output (electronic preset counter sold separately) |