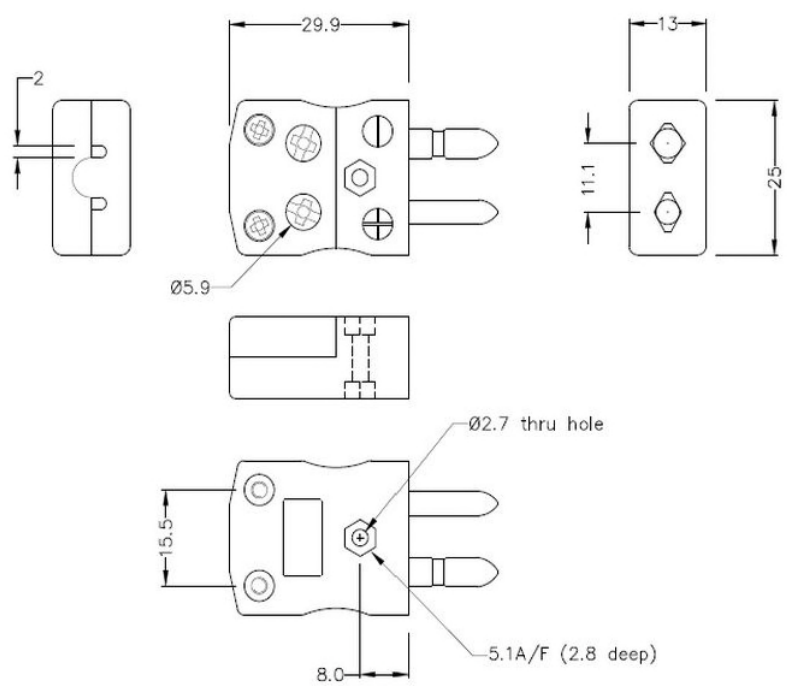


## **Standard Quick Wire Thermocouple Connector Plug IS-K-MQ Type K IEC**

**XE-1411-001**



Labfacility are the UK's leading manufacturer of Temperature Sensors, Thermocouple Connectors and associated Temperature Instrumentation and stockists of Thermocouple Cables. The Company has been trading since 1971 and is ISO 9001 accredited.



**Standard in-line Plug - Quick Wire**  
(dimensions in mm)

Specifications

General Description	Easy 'jab-in' connection for rapid termination, contacts are polarised to prevent incorrect connection.
Thermocouple Type	K IEC
Connector Size	Standard
Connector Type	Quick Wire Plug
Colour	Green
Max. Temperature	220°C
Pins	Solid Round Pins
+Positive Contact	Nickel Chromium
-Negative Contact	Nickel Alloy
Standards Met	BS EN 50212:1997. RoHS

Ordering Information

Thermocouple Type	Colour Code	Size	Style	Manufacturers Number	Order Number
K	IEC	Standard	Quick Wire Plug	IS-K-MQ	XE-1411-001

