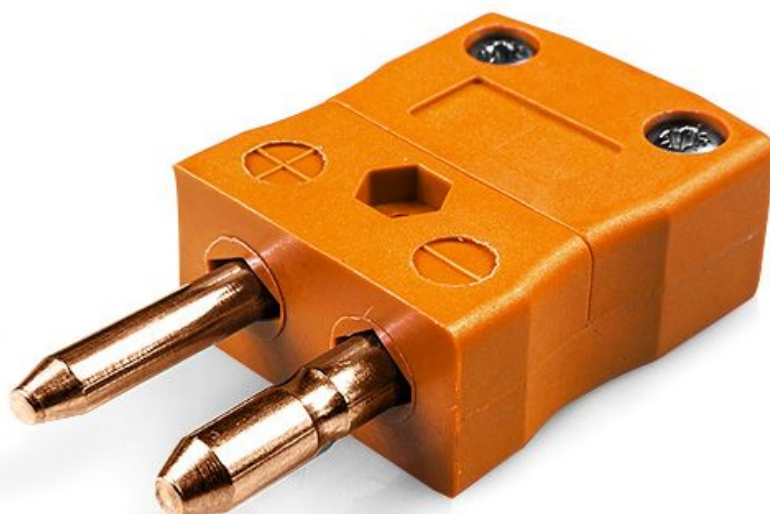


Standard Thermocouple Connector Plug

IS-R/S-M Type R/S IEC

XE-1590-001



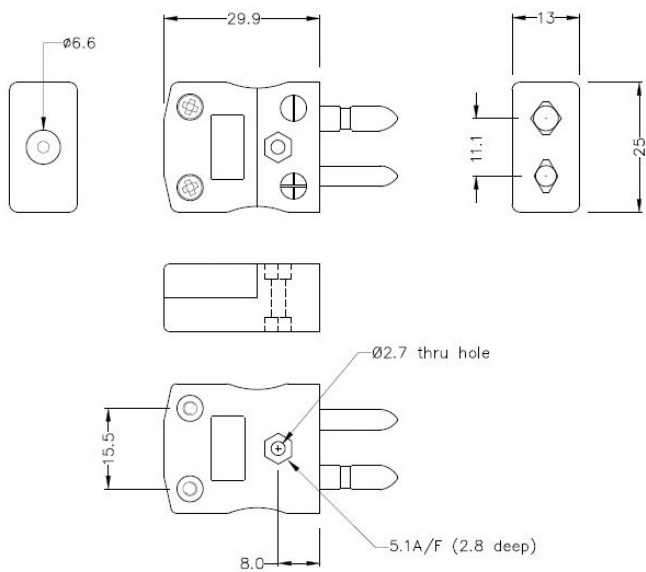
Labfacility are the UK's leading manufacturer of Temperature Sensors, Thermocouple Connectors and associated Temperature Instrumentation and stockists of Thermocouple Cables. The Company has been trading since 1971 and is ISO 9001 accredited.

Specifications

General Description	Contacts are polarised to prevent incorrect connection
Thermocouple Type	R/S IEC
Connector Type	Plug
Connector Size	Standard
Colour	Orange
Max. Temperature	220°C
Pins	Solid Round Pins
+Positive Contact	Copper
-Negative Contact	Copper Alloy
Standards Met	BS EN 50212:1997. RoHS

Ordering Information

Thermocouple Type	Colour Code	Type	Order Number
R/S	IEC	Plug	XE-1590-001



Standard in-line Plug
(dimensions in mm)

