



FLIR E4, E5, E6, E8 with MSX® Enhancement

- Display: 3" color LCD
- On-board 640 x 480 Digital Camera
- Easy-to-use, weighs only 1.2lbs
- 2% accuracy
- File format: Radiometric jpg
- Swappable Li-ion Battery with 4 hour life
- Spot Measurement mode
- Simultaneous storage of IR/Visual/MSX images
- Picture in Picture image (E6 and E8)
- Manual level and span thermal tuning (E6 and E8)
- Area Box Measurement mode (E5, E6 and E8)

Each includes power supply/charger with four plugs, rechargeable battery, FLIR Tools software, USB cable, and hard transport case. E8 also includes extra battery and external battery charger.

FLIR E4

- 4,800 pixels (80 x 60)

FLIR E5

- 10,800 pixels (120 x 90)

FLIR E6

- 19,200 pixels (160 x 120)

FLIR E8

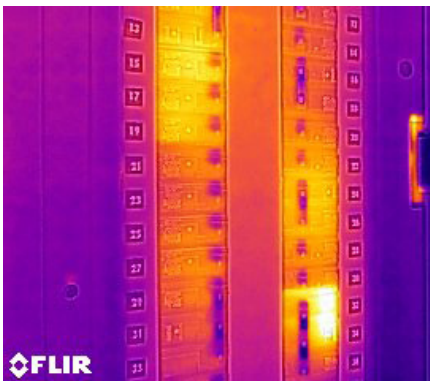
- 76,800 pixels (320 x 240)



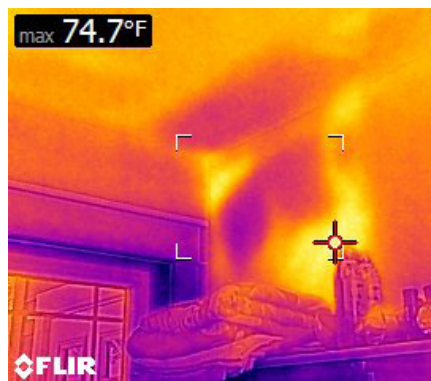
New Exclusive MSX Thermal Imaging Technology Made Affordable for Everyday Use

What is MSX?

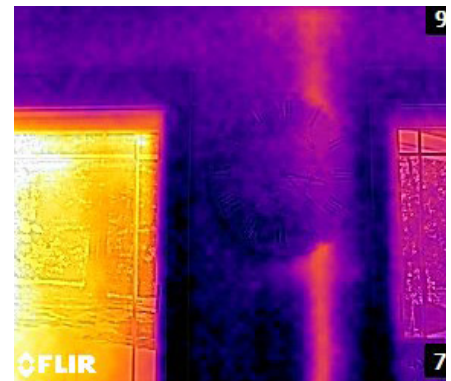
Multi-Spectral Dynamic Imaging (MSX) for easier interpretation of an image - adds visible spectrum definition to IR images by detecting the edges of objects and including that detail in the thermal image. Text becomes clearly visible so that you can read a label or identifier within the IR image. This exclusive function provides extraordinary thermal detail that instantly highlights and orients problem locations and eliminates the need to refer back to a visual image for detail.



Breaker Panel
E8 with MSX



Missing Insulation – Summer Day
E6 with MSX



Warm Drain Pipe in Wall
E4 with MSX

Imaging Specifications

| FEATURES | FLIR E4 | FLIR E5 | FLIR E6 | FLIR E8 |
|-------------------------|----------------------------|---|---|---|
| IR Pixel Resolution | 4,800 (80 x 60) | 10,800 (120 x 90) | 19,200 (160 x 120) | 76,800 (320 x 240) |
| Thermal Sensitivity | <0.15°C | <0.10°C | <0.06°C | <0.06°C |
| Temperature Range | -4 to 482°F (-20 to 250°C) | | | |
| Measurement modes | Centerspot | Centerspot, Area Box, Auto Hot/Cold detection | Centerspot, Area Box, Auto Hot/Cold detection | Centerspot, Area Box, Auto Hot/Cold detection |
| Frame Rate | 9Hz | | | |
| Field of View | 45° x 34° | | | |
| Focus | Focus free | | | |
| Auto Hot/Cold Detection | No | Auto min/max markers within area | Auto min/max markers within area | Auto min/max markers within area |



Included in All Models



Additional Accessories Included with E8



Optional Accessories

Ordering Information

63901-0101 FLIR E4 Compact Thermal Imaging Infrared Camera with MSX® Enhancement (80x60)
 63901-0101-NIST FLIR E4 with Certificate Traceable to NIST
 63905-0501 FLIR E5 Compact Thermal Imaging Infrared Camera with MSX® Enhancement (120x90)
 63905-0501-NIST FLIR E5 with Certificate Traceable to NIST
 63902-0202 FLIR E6 Compact Thermal Imaging Infrared Camera with MSX® Enhancement (160x120)
 63902-0202-NIST FLIR E6 with Certificate Traceable to NIST
 63903-0303 FLIR E8 Compact Thermal Imaging Infrared Camera with MSX® Enhancement (320x240)
 63903-0303-NIST FLIR E8 with Certificate Traceable to NIST

ACCESSORIES

T198529 Pouch
 T198530 Replacement battery
 T198531 External battery charger
 T198532 Car Charger
 T198534 Power supply/charger with EU, UK, US and AU plugs
 T198533 USB cable
 T198528 Hard Transport Case



10-Year Detector
Protection
5-Year Battery
2-Year Parts & Labor

