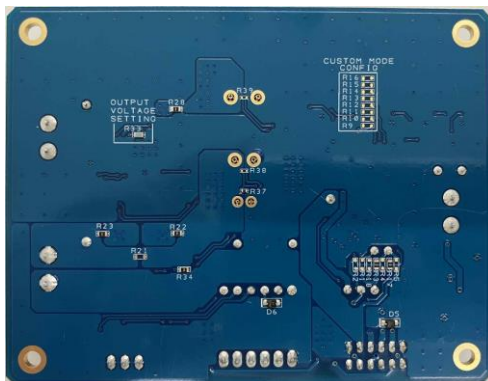


SLB Series Energy Harvesting Evaluation Board

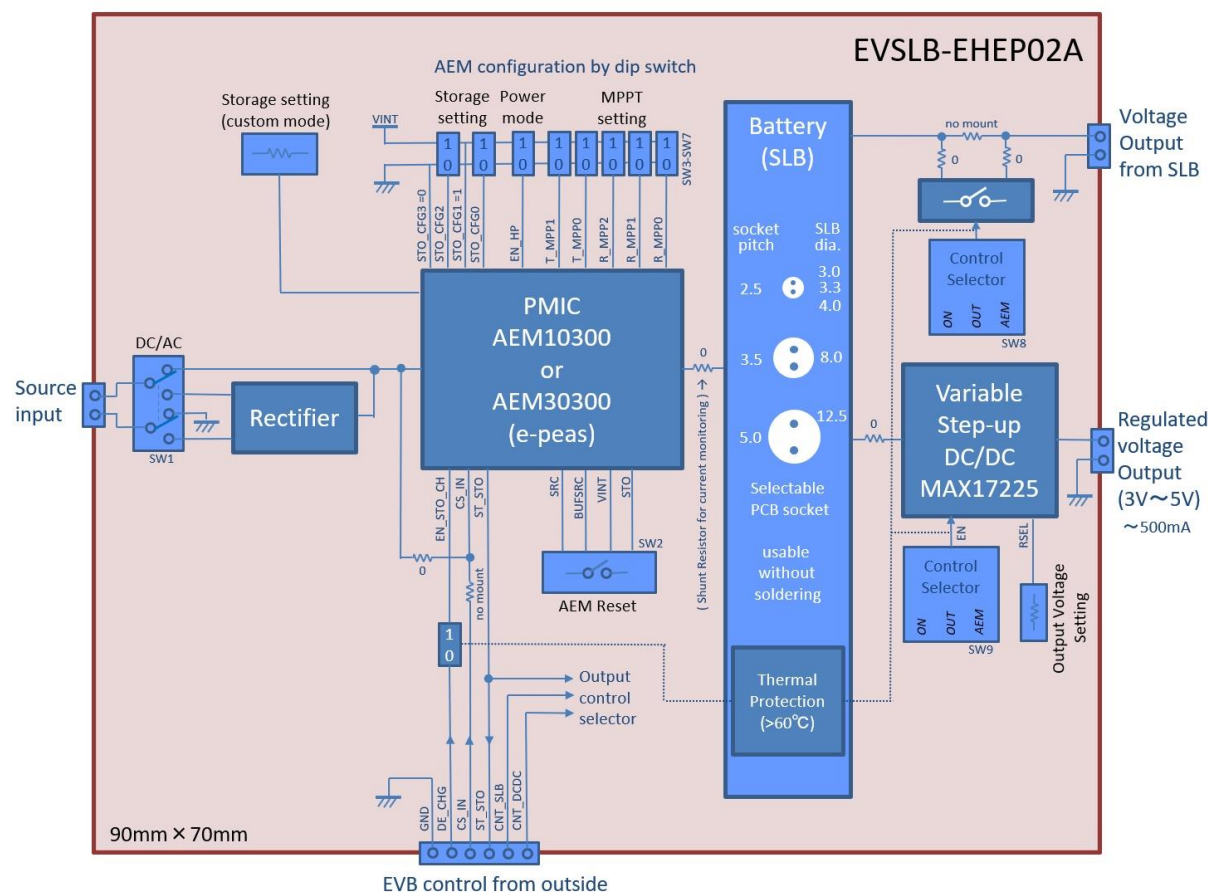


- Energy harvester connection terminal: 1 system
DC/AC switchable, Input voltage range: DC: 4.5V or less, AC: +/- 4.5V peak or less
- Power supply output terminal: 2 lines
(1) SLB DC output (2.8V to 1.8V)
(2) DC/DC converter output (factory set voltage: 3.3V)
Can be set in the range of 3.0V to 5.0V by replacing resistors
- Maximum power point tracking (MPPT) function (switchable)
Operating voltage: 7-mode release voltage ratio preset + input impedance adjustment mode
Sampling time/period: 4 preset modes
- SLB charge/discharge control threshold voltage setting (switch-type)
2 preset modes + custom setting mode
- Output circuit enable setting (switch-type)
4 modes (always on / PMIC control / external control / always off)
- One-touch connection/disconnection of SLB series is possible (no soldering required)
- Built-in charge/discharge stop circuit at high temperatures
- External control terminal
- Circuit configuration allows power consumption customization according to required function
- Test pin placement on main signal lines
- Product dimensions: 90mm x 70mm x 12mm



SLB Series Energy Harvesting Evaluation Board

Power supply board to combine SLB series with various energy harvesters



Evaluation Board Features

Solar (DC), vibration power generation (AC), etc. Input from various harvesters are possible

Supports power collection settings optimized for harvester characteristics

Compatible with all 5 types of SLB series

Supports 2 outputs (SLB direct / 3-5V)

High customizability