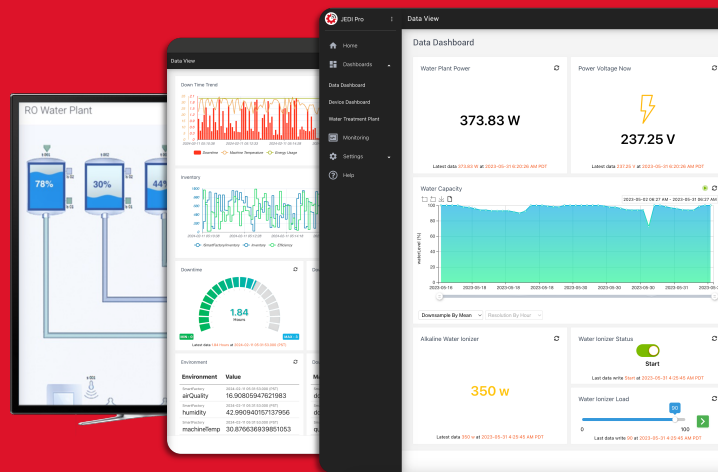




## Machinechat JEDI

Command Center Software  
for Industrial Operations



### Use Cases

#### Manufacturing

- Equipment Monitoring
- Process Monitoring
- Production Tracking
- Quality Assurance

#### Research Labs

- Environmental Monitoring
- Equipment Tracking
- Experiment Logging
- Compliance Records

#### Smart Buildings

- Building Analytics
- Energy Monitoring
- Environmental Monitoring
- System Integration

#### Custom IoT Solutions

- Custom Sensor Deployment
- Specialized Equipment Monitoring
- Multi-System Integration
- Industry-Specific Solutions

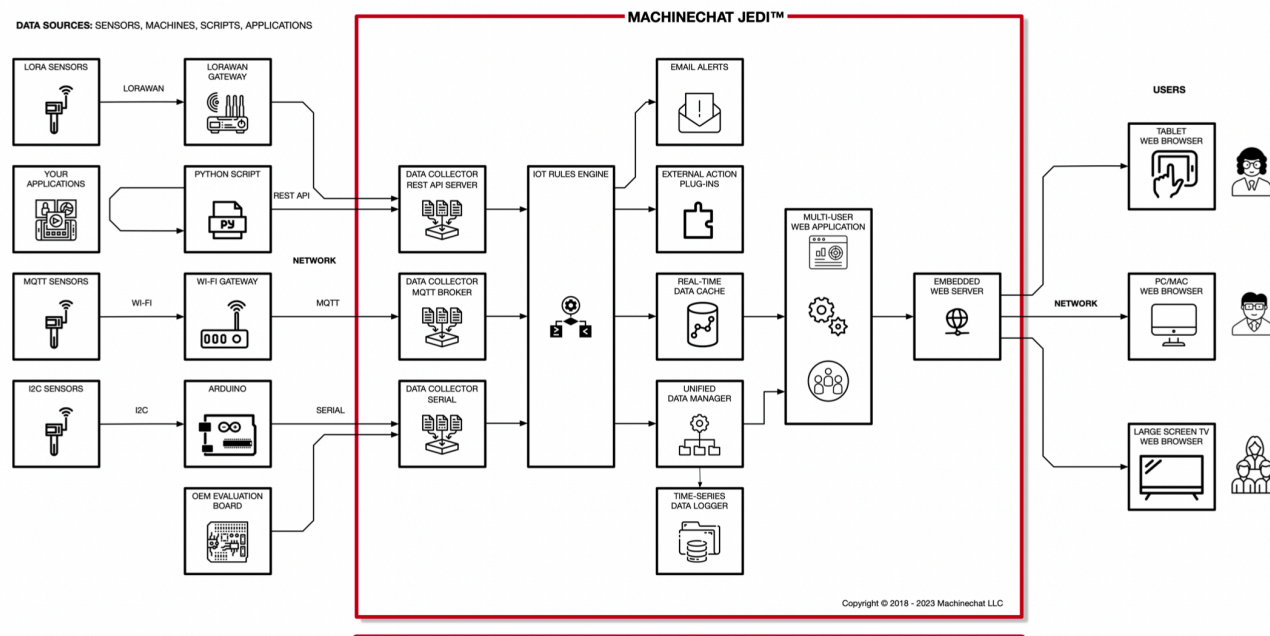
Machinechat JEDI transforms manual monitoring into an automated command center, providing instant visibility into any industrial operation. Running entirely on your network, JEDI connects with a broad range of sensors or industrial equipment to deliver real-time monitoring, alerts, and reports - all without cloud dependency or programming complexity.

Deploy in 60 minutes and start eliminating manual readings, preventing equipment issues, and commanding your operation from a single screen. With Machinechat JEDI, you get complete operational visibility while keeping all data under your control.

### Key Benefits

- 60-minute set up and deployment
- Self-contained, single-file application
- Built-in data collectors or create your own
- Zero cloud dependency
- Your data, your network, your control
- Lifetime license, one-time purchase

DATA SOURCES: SENSORS, MACHINES, SCRIPTS, APPLICATIONS



RUNS LOCALLY ON INTEL X86 AND ARM-BASED HARDWARE.  
AVAILABLE FOR MICROSOFT WINDOWS, APPLE MACOS, LINUX, RASPBERRY PI OS, BEAGLEBONE DEBIAN OS

### Built-In Data Collectors

- HTTP Endpoint
- MQTT Broker
- Modbus TCP/RTU
- LabJack T4/T8
- Serial (CSV)
- User-Defined

### Real-Time Monitoring

- Live sensor and equipment readings
- Customizable dashboards
- Multi-user, group-based views
- Mobile-friendly, browser-based GUI

### Instant Alerts & Reports

- Threshold alerts
- Complex conditions
- Execute external scripts
- Email and Telegram IM alerts
- CSV & HTML reports by email

### Data Management

- Built-in data logger
- Analyze historical trends
- Open data format
- Data retention management

## Editions & Licensing

### Machinechat JEDI One

- \$199 lifetime license, one-time fee
- Single user
- 10 devices, 30 metrics per device
- Free minor version updates
- Standard email support
- Optional priority support & training

### Machinechat JEDI Pro

- \$399 lifetime license, one-time fee
- Multi-user, 3 accounts included
- 100 devices, 30 metrics per device
- Free minor version updates
- Engineer-to-engineer email support
- Optional priority support & training

### Optional Licenses & Upgrades

- Add additional users to JEDI Pro: \$99/user lifetime license, one-time fee
- Add additional devices to JEDI Pro: \$199/+50 devices, lifetime license, one-time fee

### Supported Hardware & Operating Systems

- Intel/AMD: Microsoft Windows 10+, Ubuntu Linux (Latest LTS), Apple macOS 11+ 8GB RAM, 75MB storage for application
- Apple Silicon: Apple macOS 11+ 8GB RAM, 75MB storage for application
- Raspberry Pi 4/5: Raspbian OS 64-bit 2GB RAM, 75MB storage for application
- BeagleBone Black/Play: Beagle Debian 12+

## Why Choose Machinechat JEDI

Transform your operations from manual monitoring to automated command in 60 minutes or less. With one-time pricing and zero cloud dependency, JEDI delivers professional-grade monitoring while keeping all data under your control.

### Contact Us:

Machinechat LLC  
6203 San Ignacio Ave, #110  
San Jose, CA 95119 USA

[www.machinechat.io](http://www.machinechat.io)  
Sales: [sales@machinechat.io](mailto:sales@machinechat.io)

