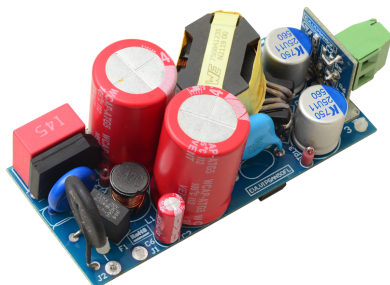


15 V / 50 W QR flyback converter based on VIPERGAN50



Product status link

[EVLVIPGAN50FL](#)

Features

- Universal input mains range: 90 – 265 V_{AC}
- Frequency: 50-60 Hz
- Output voltage: 15 V
- Output current: 3.35 A
- Stand-by mains consumption: < 85 mW at 230 V_{AC}
- Average efficiency: > 90%
- Tight line and load regulation over the entire input and output range
- Meets IEC55022 Class B conducted EMI even with reduced EMI filter, thanks to the frequency jittering feature
- RoHS compliant

Description

The **EVLVIPGAN50FL** evaluation board implements a 15 V-50 W SSR isolated flyback converter developed for general purpose application, operating from 90 to 265 V_{AC}.

The reference design is built around the VIPERGAN50, a new advanced offline high-voltage converter by STMicroelectronics, having the following features:

- 650 V PowerGaN with embedded senseFET (Si) and HV startup;
- QR operation with dynamic blanking time and adjustable valley synchronization delay functions, to maximize efficiency at any input line and load condition;
- Valley-lock to ensure constant valley skipping;
- Input voltage feedforward compensation for mains-independent OPP intervention;
- Adaptive burst mode for advanced power management in light load conditions;
- Frequency jittering for EMI suppression.

Enhanced system reliability is ensured by the built-in soft-start function and by the following set of protections:

- Input OVP (settable);
- Brown-in and brown-out (settable);
- Output OVP (settable);
- Output overload;
- OCP LEB;
- Embedded thermal shutdown.

The EVLVIPGAN50FL is composed of a main board and a daughterboard, whose schematics are shown in [Figure 1](#) and [Figure 2](#) respectively.

The main board contains, on the primary side, a diode bridge for double wave rectification, an input pi filter for EMI, a flyback transformer, the VIPERGAN50 and all the related components needed for polarization and features setting; on the secondary side, the output capacitors and the output rectifier, realized by a Power MOSFET driven by a synchronous rectifier for efficiency optimization.

1 Schematic diagram

Figure 1. EVLVIPGAN50FL schematic (mainboard)

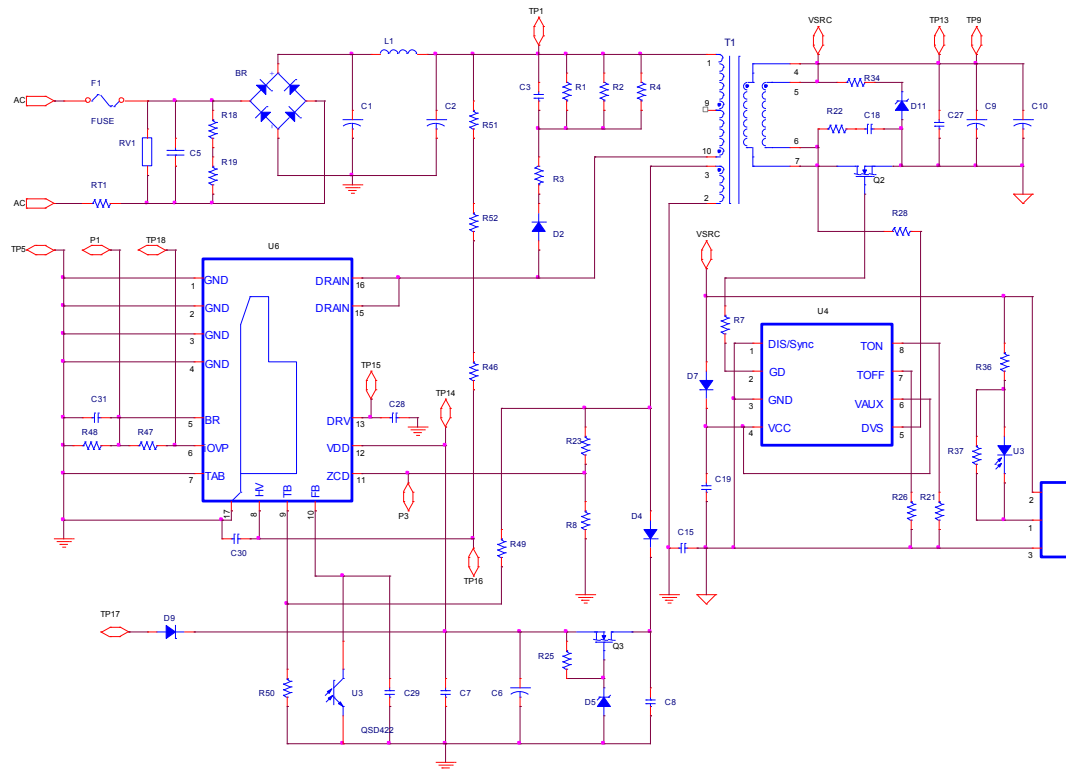
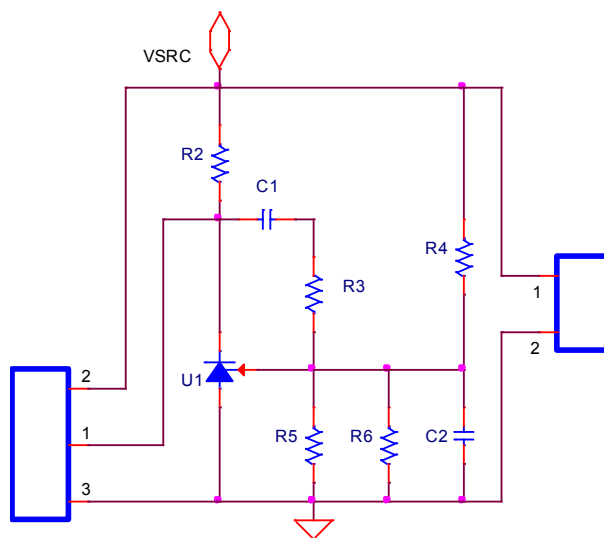


Figure 2. EVLVIPGAN50FL schematic (daughterboard)



Revision history

Table 1. Document revision history

Date	Version	Changes
05-Sep-2022	1	Initial release.
19-Jun-2024	2	Updated Figure 1 and Figure 2 , updated Section Description .



Contents

1	Schematic diagram	2
	Revision history	3

IMPORTANT NOTICE – READ CAREFULLY

STMicroelectronics NV and its subsidiaries ("ST") reserve the right to make changes, corrections, enhancements, modifications, and improvements to ST products and/or to this document at any time without notice. Purchasers should obtain the latest relevant information on ST products before placing orders. ST products are sold pursuant to ST's terms and conditions of sale in place at the time of order acknowledgment.

Purchasers are solely responsible for the choice, selection, and use of ST products and ST assumes no liability for application assistance or the design of purchasers' products.

No license, express or implied, to any intellectual property right is granted by ST herein.

Resale of ST products with provisions different from the information set forth herein shall void any warranty granted by ST for such product.

ST and the ST logo are trademarks of ST. For additional information about ST trademarks, refer to www.st.com/trademarks. All other product or service names are the property of their respective owners.

Information in this document supersedes and replaces information previously supplied in any prior versions of this document.

© 2024 STMicroelectronics – All rights reserved