

Industrial PC

EPC/PPC-CM4-070



PN: CS10600RA4070

Content can change at anytime, check [documentation website](http://www.chipsee.com) for latest information.
www.chipsee.com

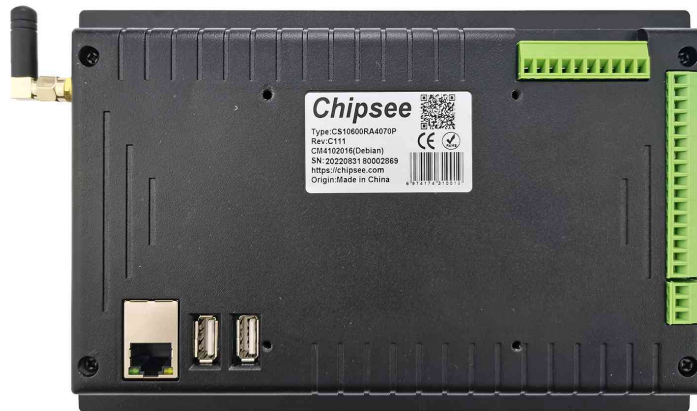
Contents

1. EPC/PPC-CM4-070	4
1.1. Product Overview	6
1.2. Ordering Options	7
1.2.1. Pi® CM4 Module	7
1.2.2. Operating System	7
1.2.3. Optional Features	7
1.3. 7 inch CM4 Products Comparision	7
1.4. Specifications	9
1.5. Power Input	11
1.6. Touch Screen	12
1.7. Connectivity	13
1.7.1. RS232/RS485/CAN	13
1.7.2. GPIO Port	14
1.7.3. USB Connectors	16
1.7.4. LAN Connectors	17
1.7.5. WiFi & BT Module	18
1.7.6. 3G/4G/LTE Module	18
1.7.7. Zigbee Module	19
1.7.8. Camera Connector	20
1.8. TF Card Slot	22
1.9. Audio Connectors	23
1.10. PROG Button	24
1.11. Mounting Procedure	25
1.11.1. CS10600RA4070E	25
1.11.2. CS10600RA4070P	25
1.12. Mechanical Specifications	26
1.12.1. CS10600RA4070P	26
1.12.2. CS10600RA4070E	26
1.13. 3D Model	26
1.14. Disclaimer	27

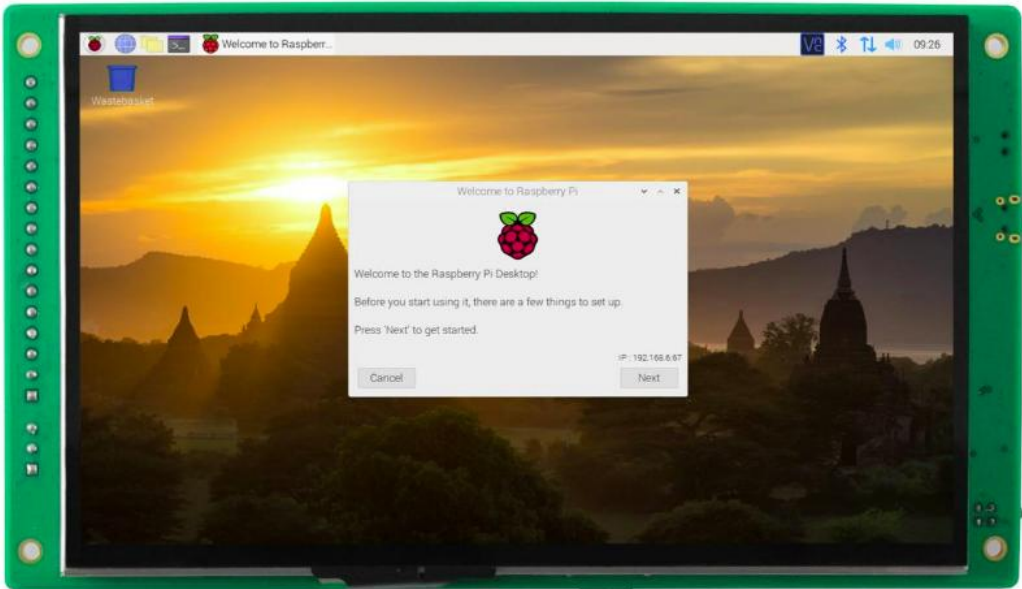
EPC/PPC-CM4-070



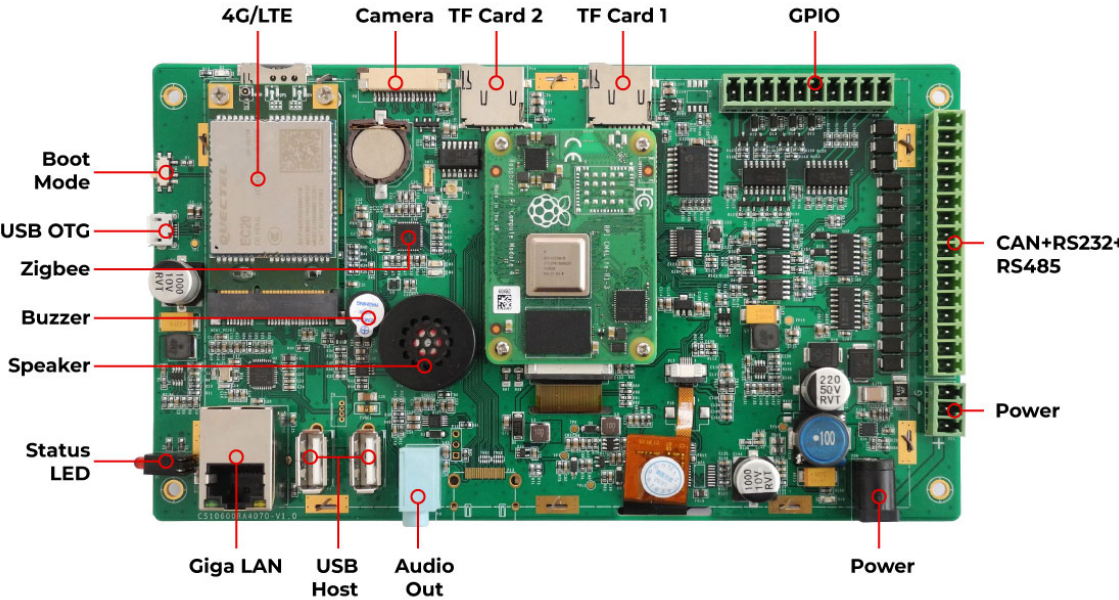
Front View



Rear View



Front View (Embedded Variant)



Rear View (Embedded Variant)

Product Overview

The Cortex[®]-A72 Raspberry Pi[®] series EPC/PPC-CM4-070 (PN: CS10600RA4070) is a high-quality industrial Pi PC. It features a 7" five-point capacitive touch screen with a resolution of 1024 x 600 pixels and brightness of 500 cd/m².

Key Applications

- Human Machine Interface HMI
- Process Control
- Process Monitoring
- HMI
- IIoT node
- Environmental Monitoring
- PLC
- Automotive applications
- ATM...

It is available both as an embedded solution and as a device housed in a casing with bezels, thus facilitating different installation options:

- Installation on an industrial cabinet
- Integration with the existing equipment

The EPC/PPC-CM4-070 industrial Pi PC is based around the powerful Raspberry Pi[®] Compute Module 4, powered by the Quad Cortex[®]-A72 processor with a processor speed of 1.5GHz.

Ordering Options

Chipsee products can be customized during the ordering process. The product will be shipped with the pre-installed factory defaults if no extra requirements are specified. The table in the [Specifications](#) section provides information about the default options bundled with the product.

Note

You can order [EPC/PPC-CM4-070](#) from the official [Chipsee Store](#) or from your nearest distributor.

Pi[®] CM4 Module

The Pi[®] Compute Module 4 appears in different versions depending on the size of the DDR4 and eMMC.

The EPC/PPC-CM4-070 industrial Pi PC does not include the CM4 Raspberry Pi[®] module by default. If you would like to purchase it with a CM4, you can select it at the Chipsee store during the ordering process.

Operating System

This product comes with a pre-installed Debian OS. Chipsee software engineers have created all the drivers, so every hardware feature is readily available for any standard development tool.

If your project requires a different OS, please [Contact us](#), and we'll make a [customized version](#) that suits your needs.

Optional Features

The EPC/PPC-CM4-070 industrial Pi PC does not include the 3G/4G/LTE modules by default. These modules are optional and can be selected at the Chipsee store during the ordering process.

Warning

Installation, repair, and maintenance tasks should be performed by trained personnel only. Chipsee does not bear any responsibility for damage caused by inadequate handling of the product.

7 inch CM4 Products Comparision

Chipsee provides two 7 inch Industrial Pi PCs, EPC/PPC-CM4-070 and PPC-CM4-070-D, here is the comparison:

Product	EPC/PPC-CM4-070	PPC-CM4-070-D
LAN	1 x LAN	2 x LAN
USB-A	2 x USB 2.0	2 x USB 3.0
GPIO	8 x Optical Isolated GPIO	6 x Raspberry Pi CPU GPIO (Compatible with Pi GPIO Software Libraries) or 8 x Optical Isolated GPIO
Connectors	Distributed on each side	Mostly on the bottom side
Dimension	206 x 135 x 30mm	188.05 x 123.11 x 33.20mm, new case, small and compact

Table 267 Comparison Between the 7 inch CM4 Products

Specifications

The EPC/PPC-CM4-070 industrial Pi PC offers a broad range of performance and connectivity options for scalable integration, providing expandability according to future needs. Some of the key features are listed in the table below.

EPC/PPC-CM4-070	
CPU	Raspberry Pi® CM4, CM4 Lite; Quad Cortex-A72 at 1.5GHz
Storage	Support for 2 x TF Card ³
RAM	2/4/8 GB, Based on CM4
eMMC	16/32 GB, Based on CM4
Display	7" IPS LCD, 1024 x 600 resolution px, brightness 500 cd/m ²
Touch	5-point capacitive touch with 1mm Armored Glass
USB	2 x USB 2.0 Host, 1 x USB OTG
LAN	1 x Channel Giga LAN
Audio	3.5mm Audio Out Connector, 2W Speaker Internal
Buzzer	Onboard Buzzer, driven by GPIO
RTC	Yes, High Accuracy RTC with Lithium Button Coin battery (lithium battery not included)
RS232	Default to 2 x RS232, up to 4 x RS232
RS485	Default to 2 x RS485 ¹ , these 2 x RS485 can be configured as 2 x RS232
CAN	1 x CAN-BUS
GPIO	8 Channels, 4 Input, 4 Output
I2C	Not Supported
WiFi/BT	Supported but depending on the CM4 selected ²
ZIGBEE	Onboard Zigbee module, not mounted by default
HDMI	Yes
SATA II	Not Supported
3G/4G/LTE	Supported, not mounted by default
Camera	Yes, not mounted by default
Power Input	From 6V to 36V
Current	420mA Max at 12V
Power Consumption	5W Typical
Working Temperature	From 0°C to +60°C

EPC/PPC-CM4-070	
OS	Debian
Dimensions	CS10600RA4070E: 190 x 108 x 28mm; CS10600RA4070P: 206 x 135 x 30mm
Weight	CS10600RA4070E: 400g; CS10600RA4070P: 700g
Mounting Method	CS10600RA4070P: Panel, VESA; CS10600RA4070E: Embedded

Table 268 Key Features

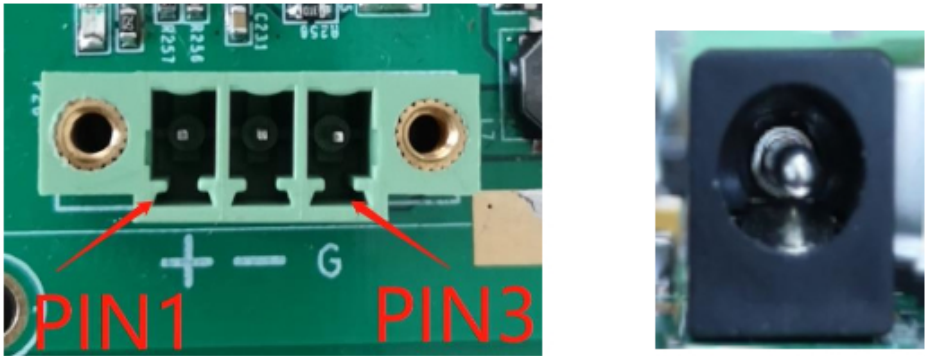
-
- 1 The RS485 circuit controls the Input and Output direction automatically, there’s no need to control it from within the software.
 - 2 The default product without the CM4 does not include a Wi-Fi/BT module. You can include a CM4 that has the Wi-Fi/BT module at the Chipsee store during the ordering process.
 - 3 Chipsee designed one of the TF card slots for Lite version which have no eMMC. We designed the other one for storage expansion, as the TF card for storage expansion use same pins with WiFi, it can’t be used with WiFi at same time.

 **Attention**

Chipsee does not install a lithium battery by default, as we cannot ship products with batteries. We recommend you buy it locally and install it by yourself. The lithium battery part number is CR1220. Please **Contact us** if you need help.

Power Input

The EPC/PPC-CM4-070 industrial Pi PC can be powered by a wide range of input voltages: From 6V to 36V DC. There are two types of power input connectors. One is a **3 Pin, 3.81mm screw terminal** connector, and the other is a **2.1mm DC input head**. As shown in the figure below.




Power Input

Note that the “+” sign represents the positive power input, and it is printed both at the casing and as a silk-screen on the board of the embedded version. The “-” terminal is shorted to the ground.

Power Input Definition		
Pin Number	Definition	Description
Pin 1	Positive Input	DC Power Positive Terminal
Pin 2	Negative Input	DC Power Negative Terminal
Pin 3	Ground	Power System Ground

Table 269 Power Connector

 **Note**

The system ground “G” is connected to power negative “-” on board.

Touch Screen

The EPC/PPC-CM4-070 industrial Pi PC uses a 5-point capacitive touch with 1mm Armored Glass screen. However, the Debian OS supports only One-Point touch.

The figure below shows the capacitive touch screen connected to the motherboard via the FPC connector.



Capacitive Touch Connector

Attention

A capacitive touch screen is susceptible to power noise and Electromagnetic Radiation (EMR). It may cause LCD ripples or even capacitive touch malfunction. If using a capacitive multi-touch test application, you might notice the touch points float erratically across the display. There are several solutions to this problem:

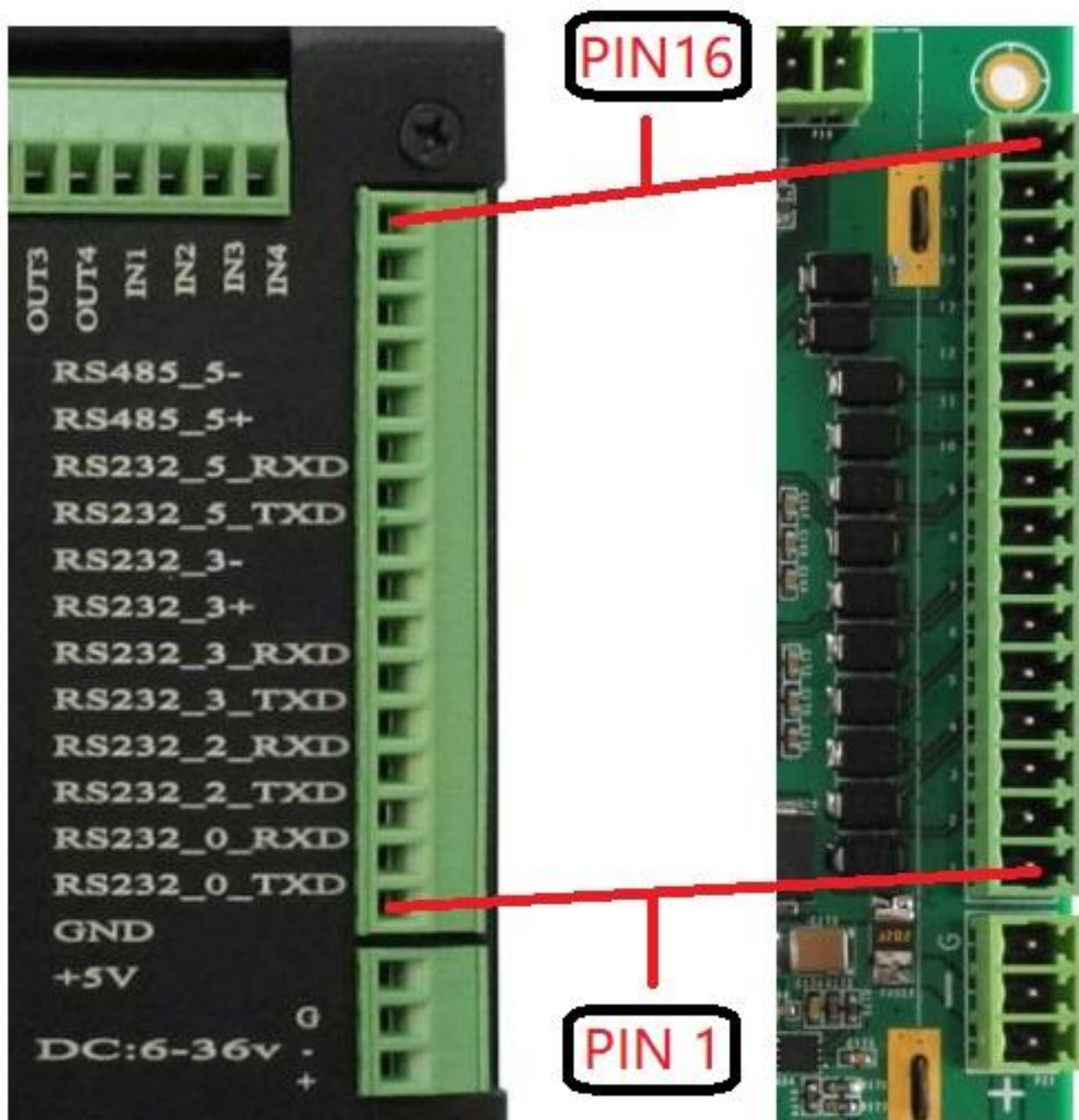
1. Use a high-quality Power Adapter Unit (PSU) with low EMR. You can also provide power from a battery.
2. Make sure that the EPC/PPC-CM4-070 Power Input connector (pin 3) is properly connected to the Power System Ground to provide sufficient EMI shielding and eliminate the problem entirely.
3. Bad GND problems can also be confirmed by touching pin 3 of the Power Input connector with one hand while operating the capacitive touch screen with the other hand. In this case, the operator's body acts as the Power System Ground.

Connectivity

There are many connectivity options available on the EPC/PPC-CM4-070 industrial Pi PC. It has 2 x USB 2.0 Host, 1 x USB OTG, 1 x Channel Giga LAN (RJ45) Ethernet connector supporting up to 1 Gbps, and 4 x UART and 1 x CAN terminals (RS232/RS485/CAN).

RS232/RS485/CAN

The serial communication interfaces (RS485, RS232, and CAN) are routed to a 16-pin 3.81mm terminal, as illustrated in the figure below.



RS232-RS485-CAN on the EPC/PPC-CM4-070 Industrial PC

⚠ Attention

1. RS485_3 and RS485_5 can control the input and output direction automatically. There's no need to control it from within the software.
2. The 120Ω match resistor for RS485 is **already** mounted by default.
3. The 120Ω match resistor for CAN is **NOT** mounted by default. Be sure to mount the match resistor when testing CAN.
4. RS485_3 and RS232_3 share UART3 and can't work at the same time; RS485_5 and RS232_5 share UART5 and can't work at the same time. Meaning the product provides 4 x RS232 + 0 x RS485, or 2 x RS232 + 2 x RS485, or 3 x RS232 + 1 x RS485.

The table below offers more detailed description of every pin and its definition:

RS232 / RS485 / CAN Pin Definition:		
Pin Number	Definition	Description
Pin 16	CAN_H	CAN BUS "H" signal
Pin 15	CAN_L	CAN BUS "L" signal
Pin 14	RS485_5-	CPU UART5, RS485 -(B) signal
Pin 13	RS485_5+	CPU UART5, RS485 +(A) signal
Pin 12	RS232_5_RXD	CPU UART5, RS232 RXD signal
Pin 11	RS232_5_TXD	CPU UART5, RS232 TXD signal
Pin 10	RS485_3-	CPU UART3, RS485 -(B) signal
Pin 9	RS485_3+	CPU UART3, RS485 +(A) signal
Pin 8	RS232_3_RXD	CPU UART3, RS232 RXD signal
Pin 7	RS232_3_TXD	CPU UART3, RS232 TXD signal
Pin 6	RS232_2_RXD	CPU UART2, RS232 RXD signal
Pin 5	RS232_2_TXD	CPU UART2, RS232 TXD signal
Pin 4	RS232_0_RXD	CPU UART0, RS232 RXD signal
Pin 3	RS232_0_TXD	CPU UART0, RS232 TXD signal
Pin 2	GND	System Ground
Pin 1	+5V	System +5V Power Output, No more than 1A Current output

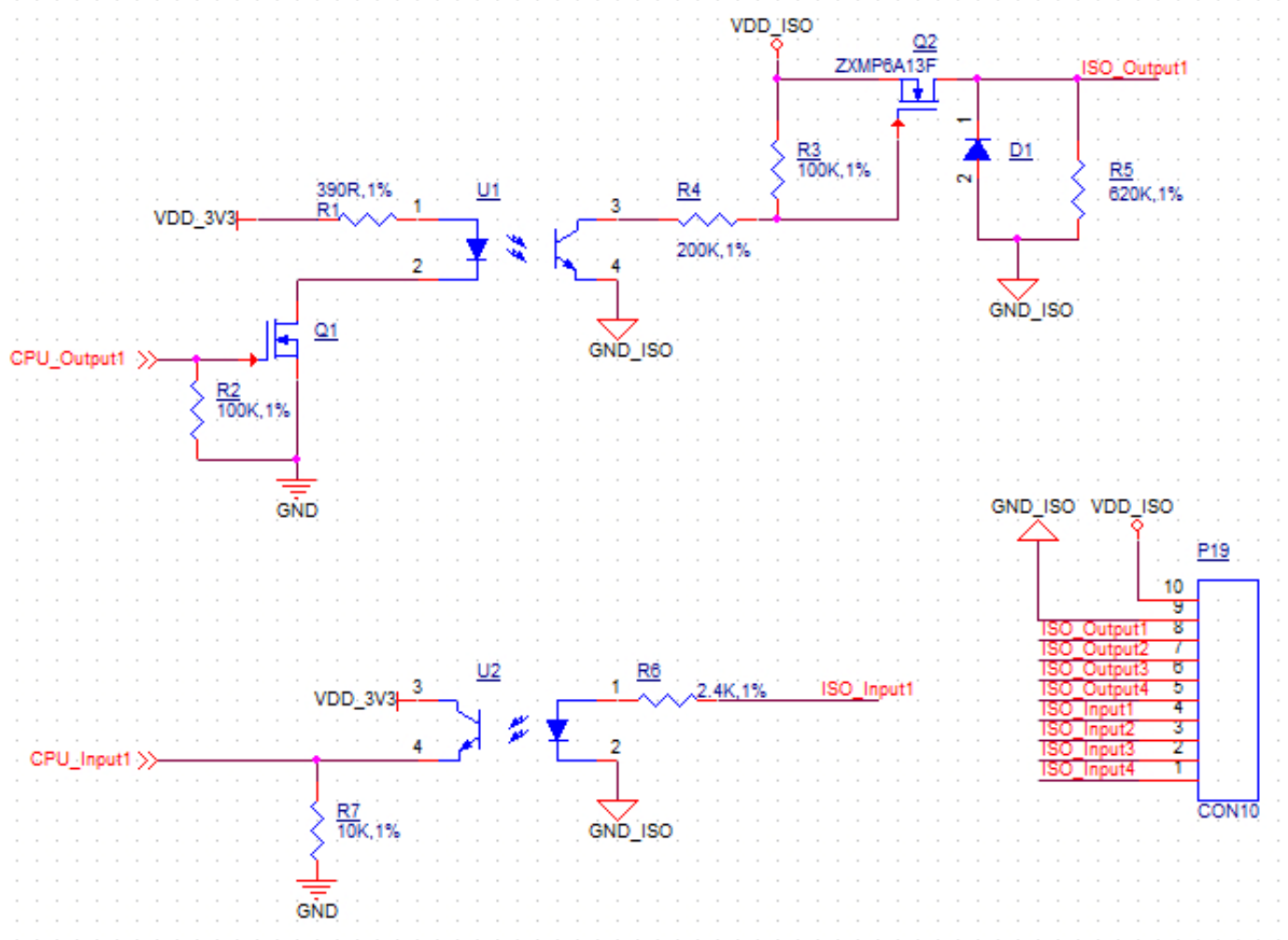
Table 270 Connectivity Section

GPIO Port

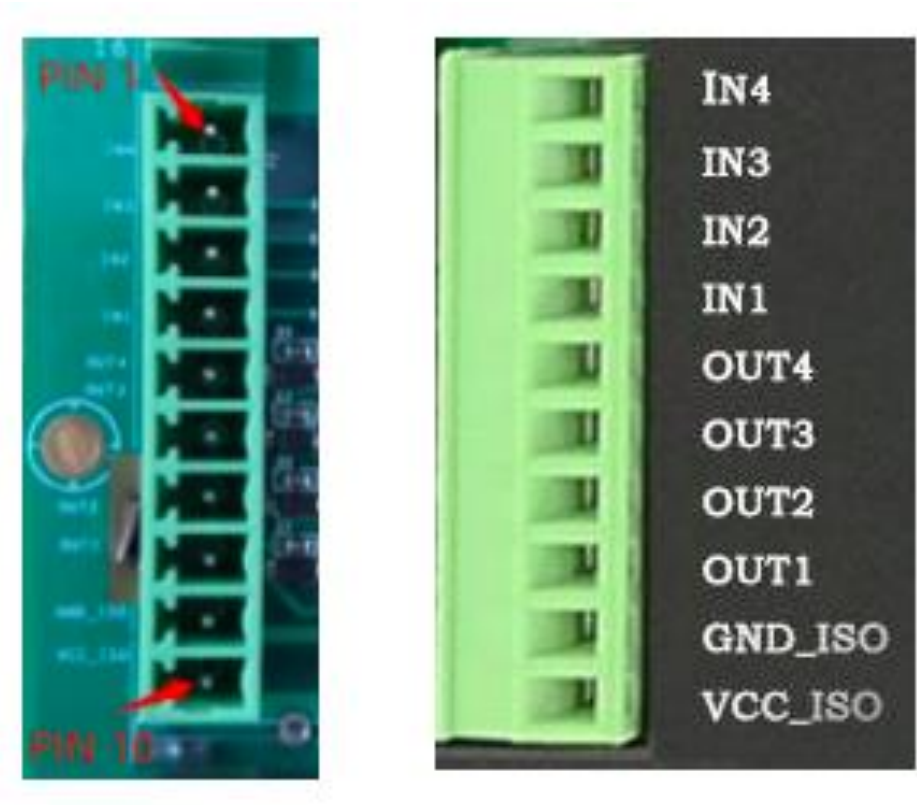
The EPC/PPC-CM4-070 industrial Pi PC has a 10 Pin 3.81mm **GPIO Connector**, as shown in the figure below. The table below gives details about the definition of every Pin.

Attention

1. In order to use the Isolated Output, you need to add an external Isolated Power to the VDD_ISO and GND_ISO. The power voltage should not exceed 24V.
2. The output current can achieve 500mA for every channel, but it also depends on the isolated power that is connected.
3. In order to use the Isolated Input, you need to add a signal to the ISO_InputX and GND_ISO. A 2.4K Ω resistor, as R6, can be added to limit the input current, as shown in the figure above. This resistor should work well for the 5-24V input signal. If your input signal is less than 5V, please change this input resistor.



Isolated GPIO reduced schematic



GPIO Connector

GPIO Connector Pin Definition:		
Pin Number	Definition	Description
Pin 10	VDD_ISO	Isolated Power +5V ~ +24V Input
Pin 9	GND_ISO	Isolated Ground
Pin 8	OUT1	Isolated Output 1
Pin 7	OUT2	Isolated Output 2
Pin 6	OUT3	Isolated Output 3
Pin 5	OUT4	Isolated Output 4
Pin 4	IN1	Isolated Input 1
Pin 3	IN2	Isolated Input 2
Pin 2	IN3	Isolated Input 3
Pin 1	IN4	Isolated Input 4

Table 271 GPIO Connector Pin-out

USB Connectors

There are 2 x USB 2.0 Host, 1 x USB OTG onboard, as shown in the figure below.

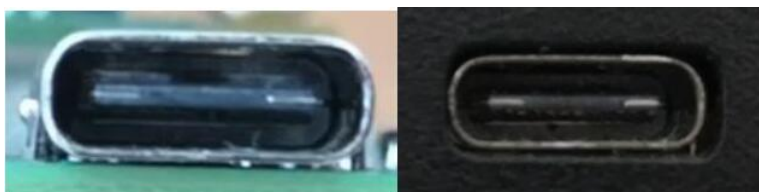


USB HOST Connectors

Attention

1. These two USB host connectors can drive 500mA for each channel at most.
2. These two USB host connectors, Zigbee and 4G/LTE come from the same USB HUB.
3. When you connect this product to the HOST PC through the Type-C port, the USB HUB will be disabled. As a result, the two USB host connectors, Zigbee and 4G/LTE will not work.

The product has one USB Type-C OTG connector that works as a slave by default. You can use it to establish a connection with the host PC and for downloading the system to the eMMC of CM4 module.



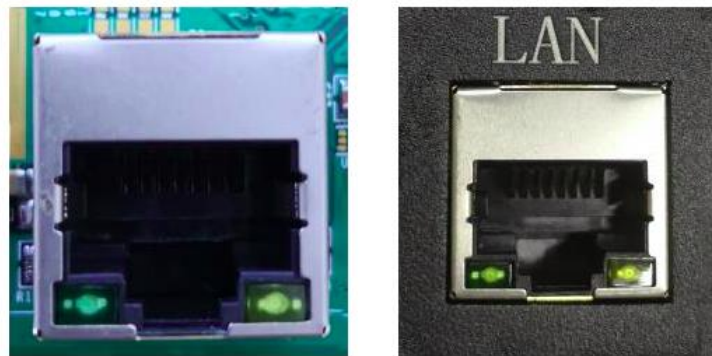
USB Type-C OTG Connector

Warning

1. Be careful not to touch surrounding electronic components accidentally while plugging in USB devices into the embedded Industrial PC version.
2. Remember to unplug the Type-C cable after flashing OS, otherwise the USB hosts won't work.

LAN Connectors

LAN (RJ45) connector provides Ethernet connectivity over standardized Ethernet cables as shown in the figure below. The integrated Ethernet interface supports up to 1 Gbps data throughput. These Giga LAN signals come from the CM4 module directly.

*RJ45 LAN Connector***Note**

Use CAT5 or better cables to achieve full data throughput over maximum distance defined by the 1000BASE-T standard (100m).

WiFi & BT Module

The default EPC/PPC-CM4-070 without the CM4 does not include a Wi-Fi/BT module. If you include a CM4 that has the Wi-Fi/BT module, the product will have Wi-Fi/BT feature. The enclosed (CS10600RA4070P) variant of the product also includes an SMA connector for an external WiFi/BT antenna, as illustrated in the figure below.

*WiFi+BT Antenna***Attention**

The product does not come shipped with the Wi-Fi/BT module by default.

3G/4G/LTE Module

The EPC/PPC-CM4-070 industrial Pi PC is equipped with a **mini-PCle connector** that can connect to a 3G/4G/LTE module. The customer will also need a SIM Card Holder and a 3G/4G/LTE antenna to ensure 3G/4G/LTE works on the EPC/PPC-CM4-070. SIM card does **NOT** support hot plug. **Power off** before inserting or removing SIM card.



SIM Card Direction



Figure 929: 3G/4G/LTE Module



Figure 930: SIM Card Holder and 3G/4G/LTE Antenna

⚠ Attention

The product does not come shipped with the 3G/4G/LTE module by default. If you need to use 3G/4G/LTE, you can contact us when placing an order, we can install the necessary hardware for you.

Zigbee Module

The EPC/PPC-CM4-070 industrial Pi PC supports an onboard Zigbee module. The Zigbee controller is TI CC2531, and the Raspberry Pi forum supports it.

For CS10600RA4070P, there is a connector on the backside of the case that you can use to connect the external Zigbee antenna, as described in the figure below. If you need to use WiFi/BT and Zigbee together, we can customized the case and add another SMA connector for you, usually across the rear to the opposite of the current SMA.

Internal Zigbee Antenna

External Zigbee Antenna Connector

Zigbee Controller

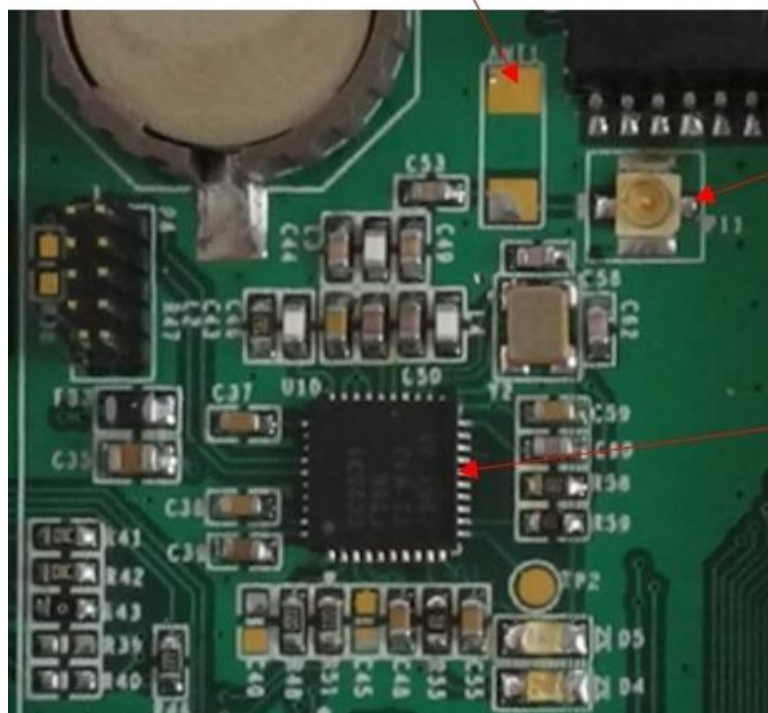


Figure 931: Zigbee controller



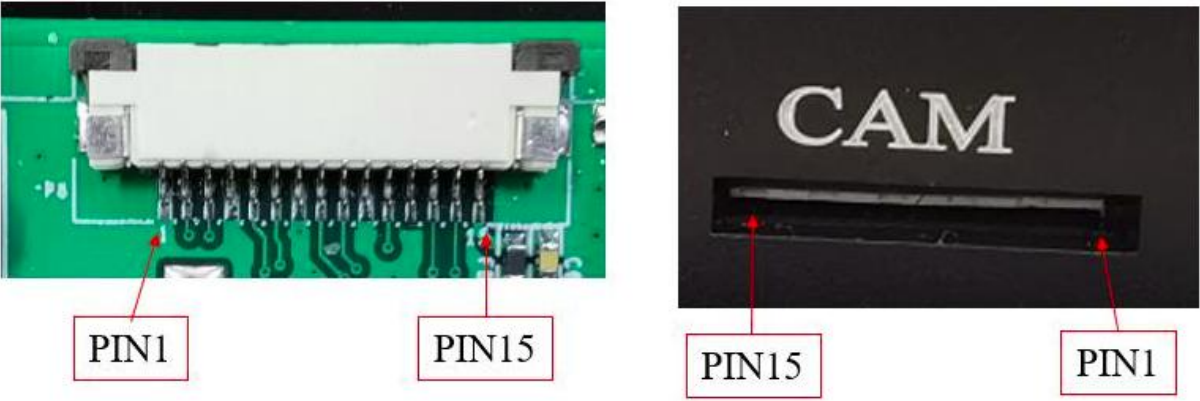
Zigbee Antenna

⚠ Attention

The product does not come with the Zigbee module by default.

Camera Connector

The EPC/PPC-CM4-070 industrial Pi PC has a 15 Pin **Camera Connector**, as shown in the figure below. The camera signals come from CAM1. The table below gives details about the definition of every Pin.



Camera Connector

Camera Connector Pin Definition:		
Pin Number	Definition	Description
Pin 1	GND	Power Ground
Pin 2	CAM1_DN0	CAM1_DN0
Pin 3	CAM1_DP0	CAM1_DP0
Pin 4	GND	Power Ground
Pin 5	CAM1_DN1	CAM1_DN1
Pin 6	CAM1_DP1	CAM1_DP1
Pin 7	GND	Power Ground
Pin 8	CAM1_CN	CAM1 Clock signal Negative
Pin 9	CAM1_CP	CAM1 Clock signal Positive
Pin 10	GND	Power Ground
Pin 11	CAM GPIO	CAM GPIO, use for disable camera power and module
Pin 12	NC	Not connected
Pin 13	SCL0	CPU I2C SCL0 signal
Pin 14	SDA0	CPU I2C SDA0 signal
Pin 15	+3.3V	System +3.3V Power Output, No more than 500mA Current output

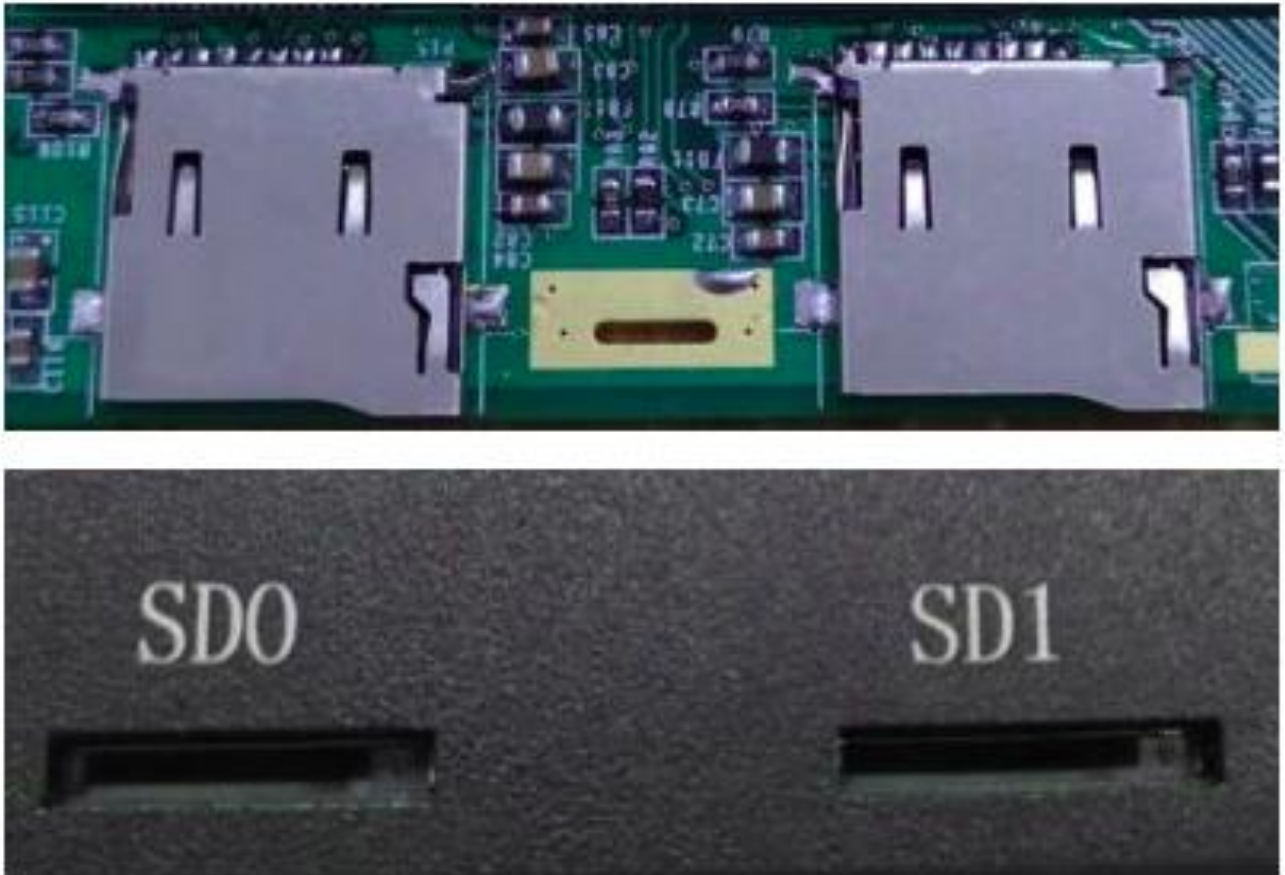
Table 272 Camera Connector Pin-out

Attention

1. The camera is not mounted by default.

TF Card Slot

The EPC/PPC-CM4-070 industrial Pi PC features 2 x **TF Card (micro SD) slot**. A slot can address up to 128GB of memory.



TF (micro SD) Card Slot

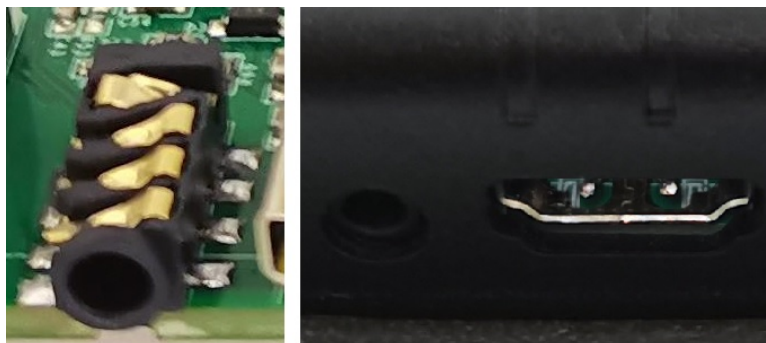
Attention

1. The **SD0** is used only for the Lite version of Compute Module 4 that has no internal eMMC. If you use CM4 with eMMC, this SD0 will be **disabled**. The **SD1** is used for storage extension, it **can't** be used for system boot-up.
2. This storage extension SD uses the same pins as WiFi on CM4. SD storage and WiFi **can't** be used at the same time.
3. The product does not come shipped with the TF card by default.

Audio Connectors

The EPC/PPC-CM4-070 industrial Pi PC features some audio peripherals. It has 1 x **3.5mm audio output jack**.

Also, the EPC/PPC-CM4-070 industrial Pi PC has a miniature 2W internal speaker for audio reproduction, as well as a small buzzer for alarm/notification sounds.



Audio Connector (enclosed PC version)

Attention

By plugging in the headphone cable, the internal speaker will be disabled automatically.

PROG Button

The EPC/PPC-CM4-070 industrial Pi PC has one button for entering usb download mode, as shown in the figure below.

When booting **with** the button being pressed, the Raspberry Pi will boot from the USB connector. You can use this feature to download the OS software to the internal eMMC. When booting **without pressing** the button, the Raspberry Pi will boot from the internal eMMC.

There is no need to press the button during regular operation. However, if you need to reinstall the OS, please refer to the detailed information on how to reflash the OS from the [Software Documentation](#).



PROG Button

Mounting Procedure

The EPC/PPC-CM4-070 industrial Pi PC can be mounted with 4 x M4 screws, enabling simplified installation onto any standard mounting fixture.

CS10600RA4070E

You can mount CS10600RA4070E with the Embedded mounting method, as shown in the figure below.

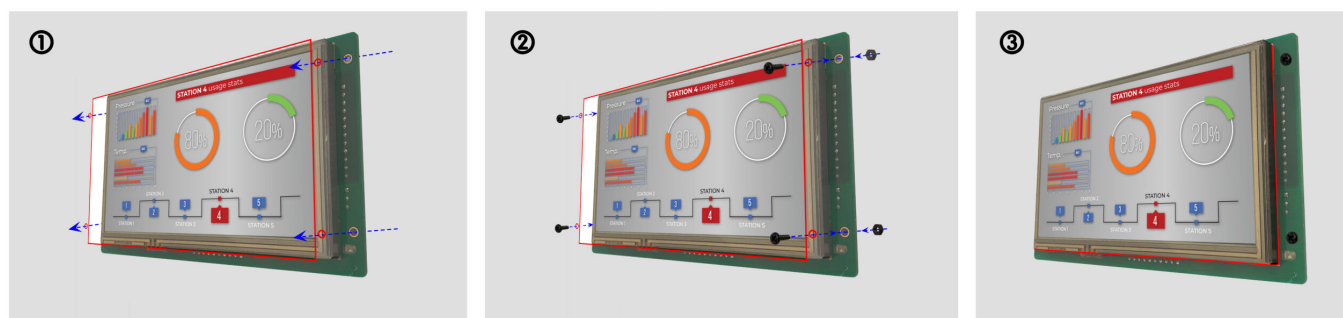


Figure 932: *Embedded mounting*

CS10600RA4070P

You can mount CS10600RA4070P with the Vesa (75 x 75mm) and Panel mounting methods, as shown on the figure below.

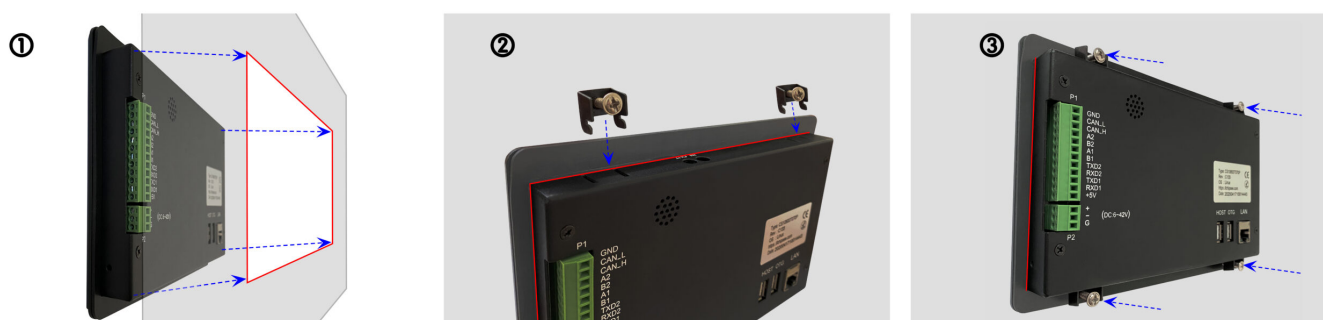


Figure 933: *Panel mounting*

Attention

Please make sure the display is not exposed to high pressure when mounting into an enclosure.

You can find detailed information about mounting in the [Mount IPC Guide](#).

Mechanical Specifications

CS10600RA4070P

For CS10600RA4070P, the outer mechanical dimensions are 206 x 135 x 30mm (W x L x H).

CS10600RA4070E

For CS10600RA4070E, the outer mechanical dimensions are 190 x 108 x 28mm (W x L x H).

Please refer to the technical drawing in the figure below for details related to the specific product measurements.

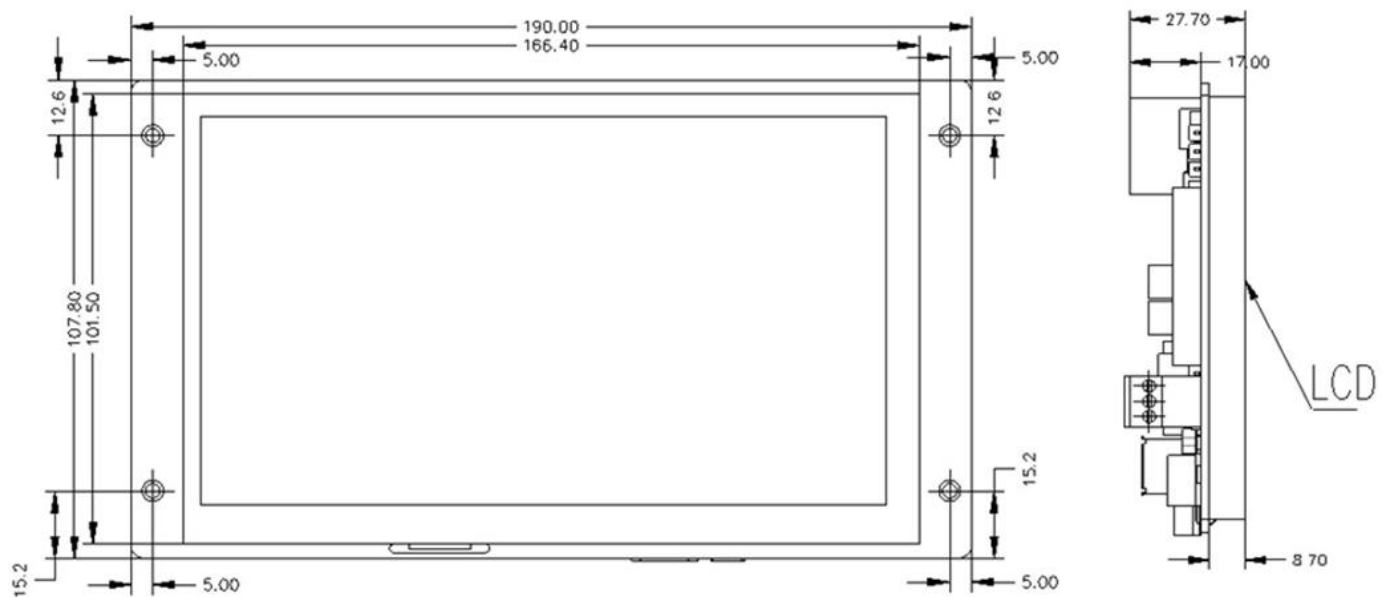


Figure 934: CS10600RA4070E *Technical Drawing*

3D Model

EPC/PPC-CM4-070 3D model can be viewed in the online doc in a web browser, if you are reading from the **PDF** version, please visit the [online doc](#).

Disclaimer

This document is provided strictly for informational purposes. Its contents are subject to change without notice. Chipsee assumes no responsibility for any errors that may occur in this document. Furthermore, Chipsee reserves the right to alter the hardware, software, and/or specifications set forth herein at any time without prior notice and undertakes no obligation to update the information contained in this document.

While every effort has been made to ensure the accuracy of the information contained herein, this document is not guaranteed to be error-free. Further, it does not offer any warranties or conditions, whether expressed orally or implied in law, including implied warranties and conditions of merchantability or fitness for a particular purpose. We specifically disclaim any liability with respect to this document, and no contractual obligations are formed either directly or indirectly by this document.

Despite our best efforts to maintain the accuracy of the information in this document, we assume no responsibility for errors or omissions, nor for damages resulting from the use of the information herein. Please note that Chipsee products are not authorized for use as critical components in life support devices or systems.

Technical Support

If you encounter any difficulties or have questions related to this document, we encourage you to refer to our other documentation for potential solutions. If you cannot find the solution you're looking for, feel free to contact us. Please email Chipsee Technical Support at support@chipsee.com, providing all relevant information. We value your queries and suggestions and are committed to providing you with the assistance you require.