

EPTTE3100

- Combined pressure and temperature measurement
- High strength, rugged stainless steel design
- Competitively priced

The **EPTTE3100** is a high quality all stainless steel combined pressure and temperature transducer, intended for use in the measurement of gases and liquids compatible with stainless steel.

The **EPTTE3100** offers the combination of the well proven EPT3100 motor sport pressure transducer with the latest integrated temperature measurement technology and features an exposed temperature sensor for quick response time measurements.

With additional EMI / RFI protection, low static and thermal errors and high resistance to shock and vibration as standard, the **EPTTE3100** assures trouble free operation at temperatures up to 125°C.

The **EPTTE3100** piezo-resistive sensing element coupled with the latest ASIC circuitry, assures excellent accuracy, choice of high level outputs and long stability, protected within a rugged, stainless steel housing.

The **EPTTE3100** high strength stainless steel construction contains no silicone oil and provides therefore excellent reliability which is backed by a one-year warranty.



Specification

Performance

Pressure:

Accuracy	+/- 0.5% at RT
Non linearity	<0.15% FS
Repeatability	<0.1% FS
Stability (1 Year)	< ± 0.1 %
Temp.coefficient offset	<0.15 % FS / 10K
Temp.coefficient span	<0.15 %FS / 10K
Overrange pressure	up to 4x rated pressure
Burst pressure	up to 6x rated pressure
Pressure cycles	> 10 million
Pressure response time:	<1ms

Temperature:

Temperature range	-50 to +150°C
Accuracy	PT1000 class B
Temperature response time:	<10s

Environment

Temperature	-20° to 125°C
Shock	1000 G, 11 msec., 1/2 Sine
Vibration	25 G peak, 20 to 2000 Hz
Sealing	IP 67

Electronics

Excitation for output pressure:	4 = 10-32 VDC for 0.5 – 4.5 V Output 5 = 5 VDC for 0.5 – 4.5 V Output
Output temperature	PT1000
Current consumption	< 10 mA
Reverse voltage protection	Yes

Mechanics

Housing incl. wetted parts	304 stainless steel, NBR70
Pressure port	see select table
Electrical connection	see select table
Weight	ca. 60 g

Pressure/ Temperature sensor



EPTTE3100

Ordering Information

(Please use the characters in the chart below to construct your product code)

Sample Code: **EPTTE3100 - M10x1 - 01000 - B - 4 - A**

Series	Port Configuration	Measurement Range	Pressure Unit	Output Signal	Electrical Interface
EPTTE3100	C - 1/8" NPT Male M10x1 - M10 x 1 Male	The sensor is available up to 25 Bar (Temperature: -50 to +150°C linear output)	B - gauge pressure	4 = 0.5 – 4.5 V 5 = 0.5 – 4.5 V ratiometric	A - 600 mm cable

Custom options available on request

Pressure Range									
Bar	0.6	1.0	1.6	2.5	4	6	10	16	25
Order Code	00060	00100	00160	00250	00400	00600	01000	01600	02500

The EPTTE3100 series is backed by a 1 Year Warranty. The purchaser is responsible for compatibility of the media, functional adequacy and correct installation of the transmitter.

Ordering Information - Stock Models

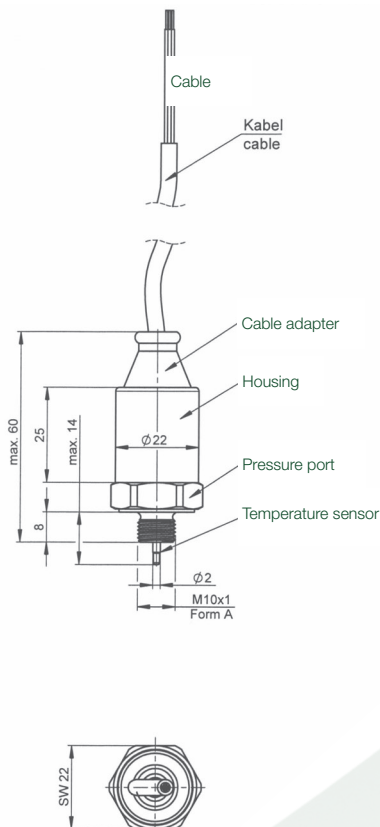
The following models are typically available from stock:

EPTTE3100-C-01000-B-5-A

EPTTE3100-m10x1-01000-B-4-A

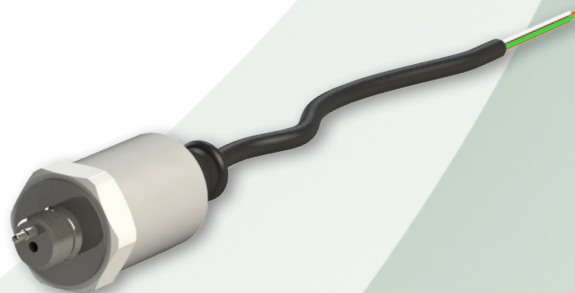
Dimensions / Electrical interface

Cable output



Electrical Connection

red:	+ Supply
black:	- Supply
white:	Output Pressure
green:	Output Temperature
blue:	Output Temperature



Variohm EuroSensor - Williams' Barn - Tiffeld Road - Towcester - Northants - NN12 6HP - UK
sales@variohm.com • www.variohm.com • +44 (0) 1327 351004

Subject to change without notice