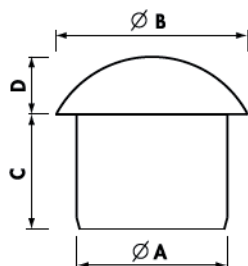


TCP Internal Plugs for Plastic and Brass Cable Glands

INTERNAL PLUGS FOR CABLE GLANDS - POLYAMIDE PA6.6



Plugs

Ref.	Suitable for MAXIblock®	MAXIbrass® MAXIinox®	Ø A (mm)	Ø B (mm)	C (mm)	D (mm)	Quantity Box/Bag
TCP5	M12R + Pg7R	M12R	4,5	8,5	10,8	4,5	3.000/100
TCP10	Pg9R	Pg9R	6	12	12	4,5	2.000/100
TCP12	M12 + Pg7 M16R + Pg11R	M12 + Pg7 M16R + Pg11R	6,8	12	12	4,5	1.000/100
TCP15	Pg9	Pg9	8	11	11,5	5	1.500/100
TCP18	M16 + Pg11	M16 + Pg11	9,5	12,5	13	5	1.500/100
	M20R	M20R					
TCP20	Pg13,5 + Pg13,5R Pg16R	Pg13 + Pg13,5R Pg16R	10	15	14	6	800/100
TCP25	M20 + Pg16	M20 + Pg16	12,5	17	15	8	400/100
TCP30	M25R + M32R Pg21R	M25R + M32R Pg21R	12,5	22,5	18	9	300/100
TCP35	M25 + Pg21	M25 + Pg21	16	19,5	18	8	300/100
TCP40	M32	M32	19	22,5	19	9	150/50
TCP45	M40R + Pg29 + Pg36R	M40R + Pg29	22	30	20	10	100/50
TCP50	M40 + M50R + Pg42R	M40 + M50R	27,5	38	25	12	50/25
TCP55	Pg36	Pg36	31,5	36,5	23,5	12	50/25
TCP60	M50	M50	34,5	40	23,5	12	50/25
TCP65	M63R + Pg42 + Pg48R	M63R + Pg42	37,5	48	26,5	12	30/15
TCP70	M63 + Pg48	M63 + Pg48	43	48	26,5	12	30/15

R: reduced cable entry

Application:

Blanking the cable entry of, **MAXIblock®**, **MAXIbrass®** and **MAXIinox®** cable glands and maintaining IP 68.

Technical details:

PROTECTION :

IP 68 (EN 60529:1991 / CEI 70-I)

MATERIAL :

POLYAMIDE PA6.6

SELF-EXTINGUISHING CLASS :

V-2 (UL 94)

TEMPERATURE RANGE :

-20°C ÷ +90°C (continuous)

COLOUR:

black RAL 9005

RESISTANCE TO CHEMICALS:

See Annexe A

(R=Resistant; LR= Low Resistance; NR= Not Resistant)

TCP Internal Plugs for Plastic and Brass Cable Glands

INTERNAL PLUGS FOR CABLE GLANDS - POLYAMIDE PA6.6

Annexe A:

Chemical agent	Level of resistance				Note
	Resistant	Limited resistance	Not resistant	Soluble	
Acetaldehyde					Swelling
Acetylene					
Acetone					
Acetic Acid, 30% solution					
Acetic Acid, 5% solution					
Acrylic Acid					
Butyric Acid, aqueous					
Butyric Acid, concentrated					
Citric Acid					
Hydrochloric Acid					
Hydrochloric Acid, concentrated					
Hydrochloric Acid, 40% solution					
Hydrochloric Acid, 1% aqueous solution					
Formic Acid, 10% acid solution					
Formic Acid, 85% acid solution					
Phosphoric Acid, 10% aqueous solution					
Phosphoric Acid, 30 % aqueous solution					
Hydriodic Acid					
Lactic Acid					
Nitric Acid, 1% aqueous solution					
Nitric Acid, 50% aqueous solution					
Oleic Acid (commercial)					
Oxalic Acid, 10% aqueous solution					
Perchloric Acid					
Hydrogen Sulfide					
Hydrogen Sulfide, 10% aqueous solution					
Hydrogen Sulfide, 30% aqueous solution					
Hydrogen Sulfide, 96% aqueous solution					Solvent
Sulphurous Acid					
Tartaric Acid					
Trichloro Acetic Acid					
Water					
Sea Water					
Hydrogen Peroxide, 10 % aqueous solution					Oxidising agent
Allyl Alcohol					
Benzyl Alcohol					
Ethyl Alcohol, concentrated					Swelling
Methyl Alcohol					
Propyl Alcohol					Swelling
Alcohols of fatty acid					
Cinnamic Aldehyde					
Furan Aldehyde					
Zinc Halide, aqueous solution					
Liquid Ammonia					
Carbon Dioxide					
Sulphurous Anhydride					

INTERNAL PLUGS FOR CABLE GLANDS - POLYAMIDE PA6.6

Annexe A:

Aniline					
Nitrogen					
Photographic fixing bath					
Ground bacteria (anaerobic)					
Benzaldehyde					
Benzene					
Petrol super grade					
Beer					
Bitumen					
Bromine					
Butanol					
Caprolactam, melted at 75 °C					
Potassium Carbonate, saturated solution					
Zinc Carbonate					
CFC					
Ketone					
Cyclohexane					
Cyclohexanone					
Chloral Hydrate					Solvent
Chloramine					
Sodium Chloride, aqueous solution					Oxidising agent
Chlorobenzene					
Chloroform					
Calcium Chloride, alcohol solution					
Calcium Chloride, aqueous solution					
Iron Chloride, aqueous acid					
Iron Chloride, neutral, aqueous					
Potassium Chloride, 10% aqueous solution					
Sodium Chloride, saturated solution					
Thionyl Chloride					
Vinyl Chloride					
Fuel for petrol engine					
Creosol					Solvent
Dibutyl Phthalate					
Potassium Dichromate					
Diethylene-Glycol					
Dimethylamine					
Dimethylformamide					Solvent at high temperature
Dimethyl Sulfoxide					Solvent at high temperature
Dioxane					
Disinfectant with active chlorine					Oxidizing agent
Carbon Disulfide					
E 6705					
Heptane					
Benzene Hexachloride					
Hexane					
Ethane					
Ether					
Diethyl Ether					
Ethyl Acetate					
Ethylene					

TCP Internal Plugs for Plastic and Brass Cable Glands

INTERNAL PLUGS FOR CABLE GLANDS - POLYAMIDE PA6.6

Annexe A:

Phenol					Solvent
Fertilizers					
Fluorine					
Brazing flux					Contains: Zinc Halide
Formaldehyde, 10% aqueous solution					
Formamide					See: Dimethylformamide
Phosphate					
Phthalates					Plasticiser
Butane gas					
Chlorine gas					Oxidising agent
Inert gases					
Lighting gas					
Diesel fuel for trucks					
Gel					
Glycerine					
Ethylene Glycol					
Ethylene Glycol					
Grease, wax					
Cattle fat					
Hydrogen					
Calcium Hydroxide, aqueous solution					
Potassium Hydroxide, concentrated & in solution					
Ink					Verify colour absorbtion
Calcium Hypochlorite					
Sodium Hypochlorite					Oxidising agent
Isooctane					
Isopropanol (Isopropyl alcohol)					Swelling
Methane					
Mould					
Ammonium Nitrate, saturated solution					
Silver Nitrate, aqueous solution					
Hydraulic oil					Tests must be performed in operating temperature conditions
Lubricating oil					
Mineral oil					
Gearbox oil					
Fuel oil					
Citrus oil					
Camphor oil					
Colza oil (Rape seed oil)					
Linseed oil					
Fish oil					
Turpentine oil					
Motor oil					
Brake fluid					
Ethylene Oxide					

INTERNAL PLUGS FOR CABLE GLANDS - POLYAMIDE PA6.6

Annexe A:

Oxygen					At 3 bar
Ozone, 20 ppm					Oxidising agent
Paraffin					
Potassium Perchlorate , 2% aqueous solution					Oxidising agent
Potassium Permanganate, 10% aqueous solution					Oxidising agent
Petroleum					
Natural Petroleum Gas					
Propane					
Cellulose covering					
Blood					
Silicon fluid					
Caustic soda, 10% aqueous solution					
Caustic soda, concentrated aqueous solution					See: Potassium Hydroxide , solution
Soda, aqueous solution					
Soda, saturated solution					
Sodium Trisulfate, solution 200g/l					
Ammonium Sulfate, saturated solution					
Copper Sulfate, saturated solution					
Sodium Sulfide, saturated solution					
Agfa processing solution					
Photographic processing solution					
Sweet solution pH 4.5					
Sweet solution pH 9.5					
Solvent for dry wash with boiling point between 100-140 °C					
Styrene					
Fruit juice					
Carbon Tetrachloride					
Carbon Tetrafluoride					
Tincture of Iodine (commercial)					
Toluene					
Trichloroethylene					
Triethanolamine					
Urea, 20% aqueous solution					
Urine					
Water vapour					
Xylene					
Sugar, saturated solution					