



The Perfect Fit for Imperfect Environments

Optimizing features, size & cost

Contact Us

ahsieh@diamonds
your acco

Products

Solutions

Markets

Support

About Us

Sales

Sales Portal

Admin

By Function

By Form Factor

SBCs

NVIDIA™ Solutions

Analog I/O

Digital I/O

Serial I/O

Ethernet I/O

Ethernet Switches

CAN I/O

Power Supplies

Systems

Enclosures

Mass Storage

Accessories

Software

Customization

Whitepapers

Designing Embedded Computers for Rugged Applications

Application Articles

Building Automation
Paper Processing
Train Controller
Wind Instrument
Lung Simulator
Gas Analyzer
Weapon System

Visit our Markets & Applications page.

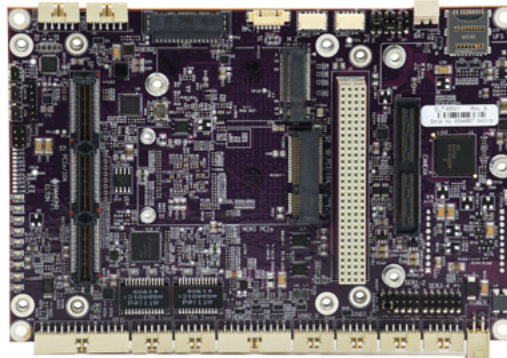
Sign Up for our eNewsletter Today!

Email Address:

Submit

Products > Nvidia Solutions > NVIDIA Solutions > ELTON™ Carrier for Nvidia Jetson Xavier
ELTON™ Carrier for Nvidia Jetson Xavier

High-Performance Carrier System for NVIDIA® Jetson™ AGX Xavier™ Module



top

◆ Ideal Platform for compute-intensive rugged embedded applications

With its NVIDIA Xavier computing power, rugged design, and PCIe/104 expansion capability, Elton offers the ideal platform for implementing high performance computing and AI applications in mobile and harsh environments.

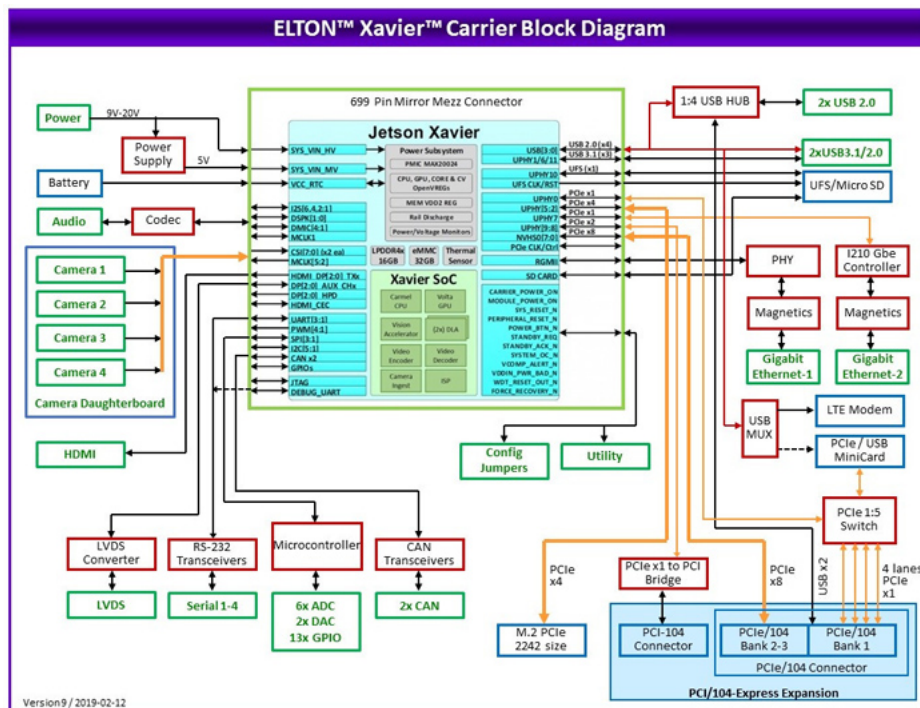
Elton utilizes the NVIDIA Jetson AGX Xavier embedded computer module to deliver unmatched performance for AI, machine learning, image processing, and other compute-intensive tasks. The Xavier module delivers up to 30 TeraOps in performance (3×10^{13} operations per second) at a maximum power dissipation of 30 watts. Xavier also offers scalable performance for applications requiring lower overall power consumption of 10 or 15 watts. The module runs at 32 TOPs on a 512-core Volta GPU with Tensor Cores and accelerators, enabling high-performance AI-powered autonomous machines like never before. At 87 x 100mm (3.4 x 3.9") it is slightly bigger than the other Jetson modules.

Elton provides numerous sockets for I/O expansion. An industry-standard camera module socket supports the attachment of up to 8 CSI cameras (up to 4 cameras with 4K resolution). An M.2 socket supports the use of PCIe x4 NVMe flash storage up to 256GB. An LTE module socket supports the use of NimbeLink SkyWire cellular modems, featuring a broad range of solutions with worldwide compatibility.

Standard PC-style I/O on Elton includes 2 USB 3.0 ports, 2 USB 3.1 ports, HD audio, HDMI and LVDS display, and 4 RS-232/422/485 ports with software configurability. All I/O is provided on pin headers that are compatible with both common non-latching and rugged latching mating cables, making Elton ideal for applications in environments subject to high shock and vibration.

top

◆ Elton Block Diagram



FEATURES

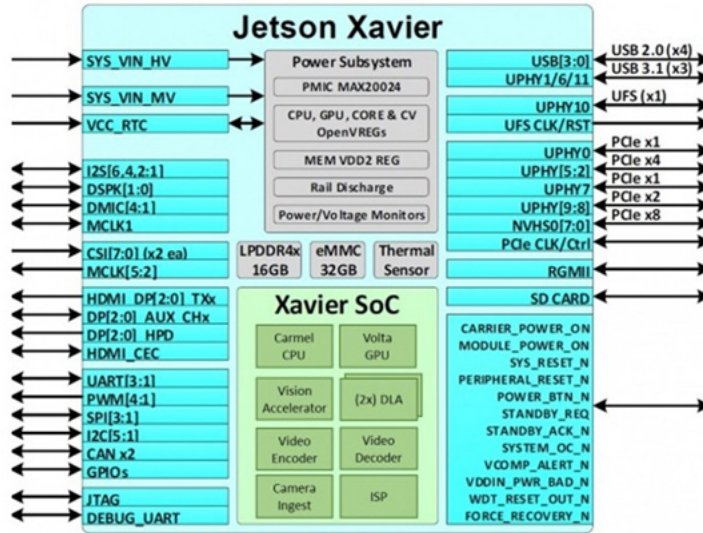
- Size: 4" x 6.00" / 101.6 x 152.4 mm
- Input voltage 9-20VDC
- On-board features:**
 - I/O breakout from Xavier bc
 - 2x USB 3.1
 - 2x USB 2.0
 - 2x Gigabit Ethernet
 - 1x HDMI
 - 1x LVDS LCD
 - 4x RS-232/RS485/RS422
 - 2x CAN 1Mbps
 - Audio
- SAM DAQ circuit:
 - 6 12-bit A/D, 0-3.3V input 1MSPS sampling rate
 - 2 12-bit D/A, 0-3.3V output
 - 13 GPIO, 3.3V logic levels
- Socketed features:**
 - Camera module connector s 6x 2-lane CSI cameras
 - UFS flash socket
 - M.2 PCIe x4 socket (2242 s)
 - 1x NimbleLink™ Skywire® m
 - PCI-104 Express expansion
 - PCI-104 connector for PCI-104
 - 3-bank PCIe/104 Type 1 connector
 - 1x PCIe x8 and 4x PCIe x1
- The PCIe/104 specifications available here

ONLINE SUPPORT

- See ELTON™ Carrier for NVIDIA Jetson Xavier Technical Resources
- Request Product Information
- Request Technical Support
- DOWNLOADS**
 - Elton user manual (.pdf, 3.7 MB)

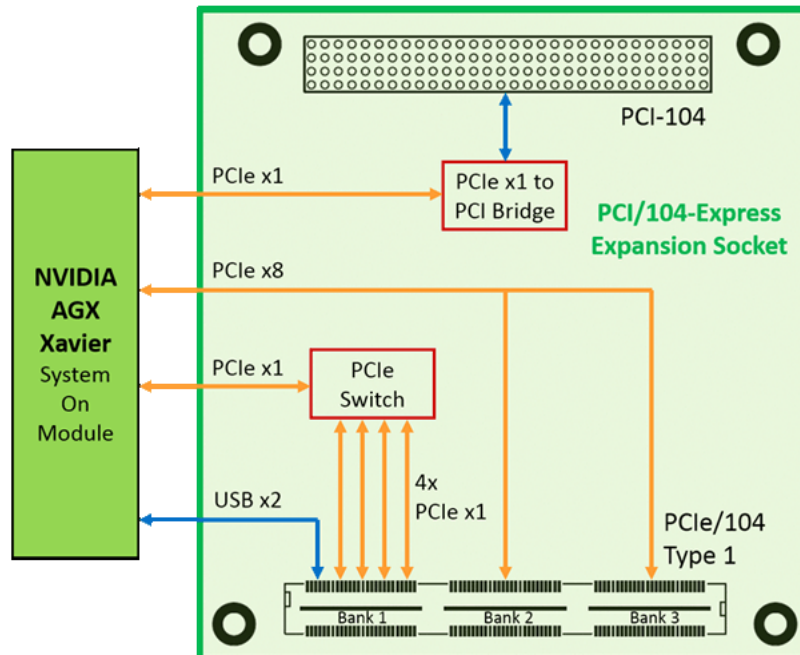
[top](#)

Jetson Xavier Block Diagram

[top](#)

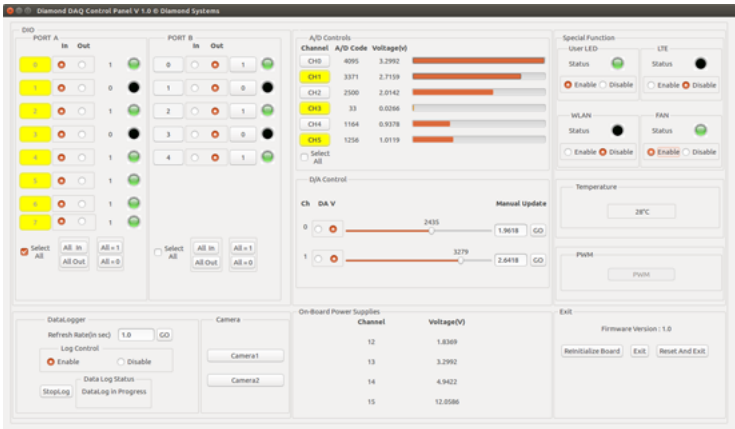
NVIDIA Meets PC/104

Unique among NVIDIA computing module carriers, Elton employs a PCI/104-Express expansion socket. The socket provides support for PCI-104, PCIe/104 type 2 (x8 lane), and PCIe/104 OneBank expansion modules (4 x1 lanes), enabling rapid creation of truly rugged, custom-configured, high performance, PCIe-based solutions using off-the-shelf I/O modules from a large number of manufacturers worldwide. Typical PCIe/104 I/O expansion includes 1G/10G Ethernet, video capture, and high resolution video display. A wide variety of industrial I/O modules, including analog, digital, serial, motion control, and other types is also available.

[top](#)

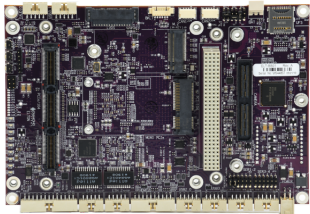
Data Acquisition

A built-in data acquisition circuit provides 12-bit A/D up to 1MSPS, 12-bit D/A, and 3.3V GPIO. Diamond's free C-language programming library simplifies application development, while a GUI control panel offers convenient control and monitoring of real-world processes as well as ready-to-run data logging capability.

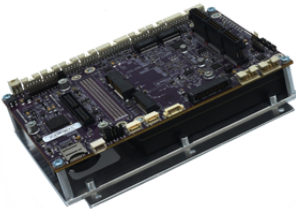


[top](#)
Unique and Rugged

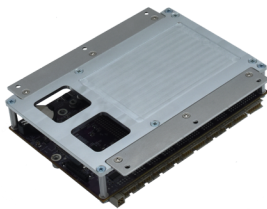
Unique among NVIDIA module carriers, Elton offers a full PCI/104-Express expansion socket with PCIe x8, PCIe x1, and PCI expansion capabilities in a solution designed for vehicle and harsh environment applications. Elton bridges the world of NVIDIA high performance computing and graphics capabilities and the world of PC/104 rugged systems. Elton is the first product to bring NVIDIA into the PC/104 ecosystem and helps to prove the enduring value of PC/104 as the PCIe expansion system of choice for small form factor, high performance, rugged embedded computer systems.



Elton carrier board

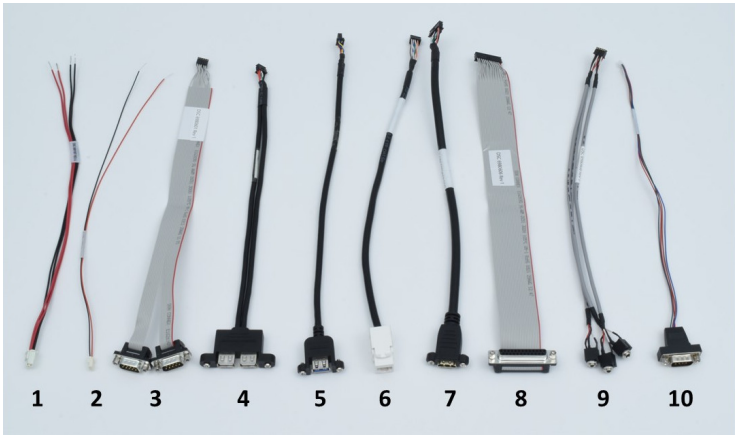


Elton carrier board with heat spreader, and no PC-104 connector bank



Elton carrier board bottom with tabs for securing to enclosure

Cable kit for Elton Jetson Xavier carrier board, Latching board connectors



CK-ELTON-01 includes the following cables:

No.	Qty	Cable	Description	Drawing
1	1	6981507	Power Cable, IPD 2x2 to Leads, 20AV	Show
2	1	6980524	Cable, External Battery, Molex Spox	Show
3	1	6980601	Dual serial, latching, 2x DB9M	Show
4	1	6980602	Cable, Dual USB 2.0, FCI 98414 to D	Show
5	1	6980603	Cable, USB 3.0, Latching, FCI 98414	Show
6	1	6980604	Cable, RJ-45 socket, panel mount	Show
7	1	6980605	HDMI Cable	Show
8	1	6980606	DAQ Cable	Show
9	1	6980608	Audio cable 2mm to 3x3.5mm	Show
10	1	6981182	CANbus 2.0 dual port cable	Show

[top](#)

 [Get an online quote](#)

ELTON™ Carrier for Nvidia Jetson Xavier

available models:		quantity:
ELT-BB01	Elton carrier board for Jetson AGX Xavier computer on module with PCIe/104 expansion	<input type="text" value="0"/>
ELT-BB02	Elton carrier board for Jetson AGX Xavier computer on module with PCIe/104 + PCI-104 expansion	<input type="text" value="0"/>
ELT-BB03	Elton carrier board for Jetson AGX Xavier computer on module, no PCIe/104 / PCI-104 expansion	<input type="text" value="0"/>
ACC-HSELT-01	Heat spreader for Elton carrier board	<input type="text" value="0"/>

[view your online quote](#) [add to quote](#)

Cables and accessories

available models:		quantity:
CK-ELTON-01	Cable kit, Elton Latching type	<input type="text" value="0"/>
6981507	Power Cable, IPD 2x2 to Leads, 20AV	<input type="text" value="0"/>
6980524	Cable, External Battery, Molex Spox	<input type="text" value="0"/>
6980601	Dual serial, latching, 2x DB9M	<input type="text" value="0"/>
6980602	Cable, Dual USB 2.0, FCI 98414 to D	<input type="text" value="0"/>
6980603	Cable, USB 3.0, Latching, FCI 98414	<input type="text" value="0"/>
6980604	Cable, RJ-45 socket, panel mount	<input type="text" value="0"/>
6980605	HDMI Cable	<input type="text" value="0"/>
6980606	DAQ Cable	<input type="text" value="0"/>
6980608	Audio cable 2mm to 3x3.5mm	<input type="text" value="0"/>
6981182	CANbus 2.0 dual port cable	<input type="text" value="0"/>

[view your online quote](#) [add to quote](#)

[Home](#) | [Search](#) | [Sitemap](#) | [Privacy](#) | [About Us](#) | [Contact Us](#) | [Email Us](#)

Copyright© Diamond Systems Corporation 2001-2020. All rights reserved.