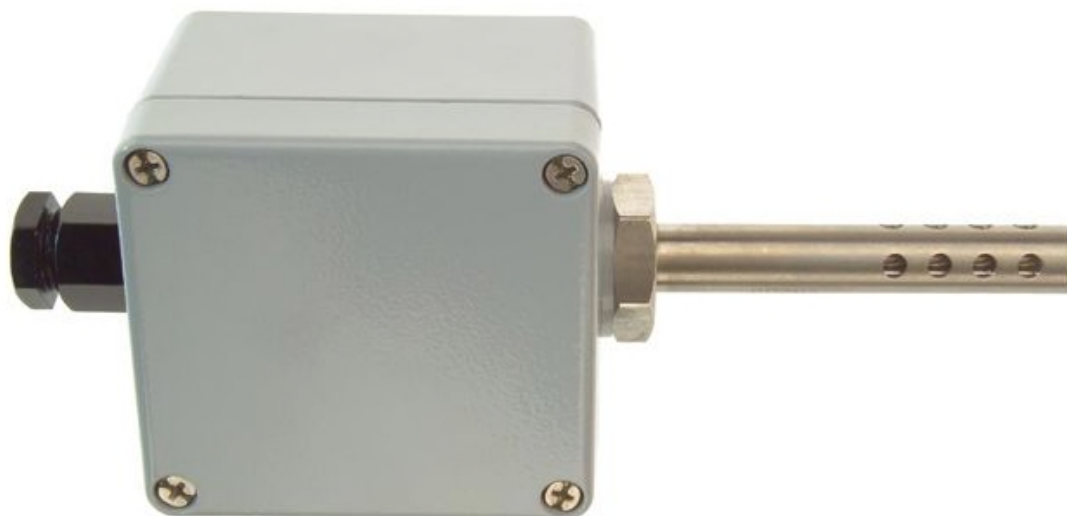


**Pt100 Outdoor / Cold Store Temperature  
Sensors - Type PRT -  
Dual Element**

**XE-3674-001**



Labfacility are the UK's leading manufacturer of Temperature Sensors, Thermocouple Connectors and associated Temperature Instrumentation and stockists of Thermocouple Cables. The Company has been trading since 1971 and is ISO 9001 accredited.

Duplex 2 x 4 wire with two independent sensing elements, allowing connection to two measurement or control devices; alternatively one sensor may be used as a primary and the other as a back-up, eliminating the need to remove and replace the probe if one of the sensors should fail – can be connected to any Pt100 2, 3 or 4 wire instrument.

## Specifications

<b>General Description</b>	Weatherproof IP67 rated wall mounting Pt100 for accurate outdoor air temperature sensing
<b>Sensor Type</b>	Dual element
<b>Housing</b>	Painted Die-Cast Aluminium Housing L80 x W74 x H54mm
<b>Element</b>	Pt100, class B to IEC 751
<b>Sheath Material</b>	Perforated 316 stainless steel probe, 12.7mm x 75mm
<b>Gland</b>	M20 cable entry gland
<b>Max. Temperature</b>	+150°C
<b>Min. Temperature</b>	-50°C
<b>IP Rating</b>	IP67
<b>Number of Wires</b>	2 x 4 wires

## Ordering Information

Type	Element	Order Number
PRT	Dual	XE-3674-001