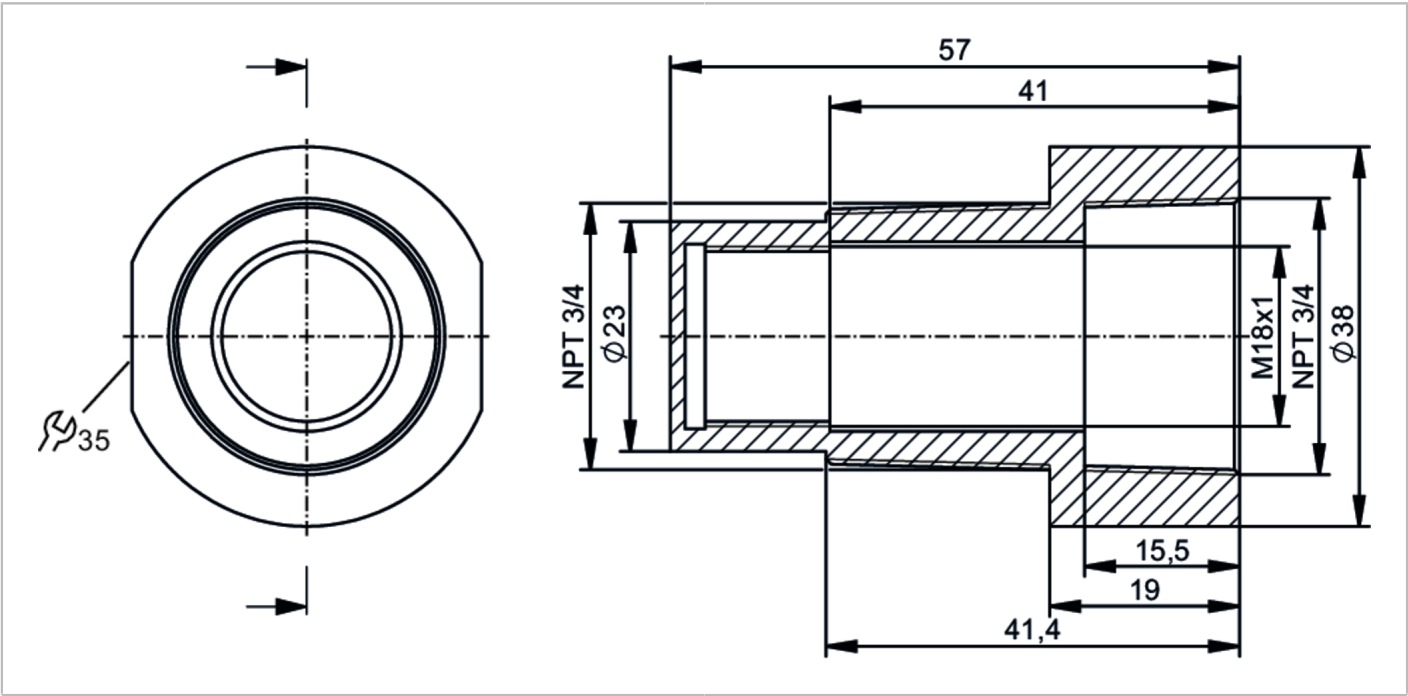


E19927



Mounting adapter for capacitive sensors

MOUNTING ADAPTER M18 PTFE



Application	
Design	for type M18
Mechanical data	
Weight [g]	47.5
Dimensions [mm]	3/4" NPT / L = 57
Thread designation	3/4" NPT
Materials	PTFE
Sensor connection	threaded connection M18 x 1 internal thread
Process connection	3/4" NPT
Remarks	
Pack quantity	1 pcs.