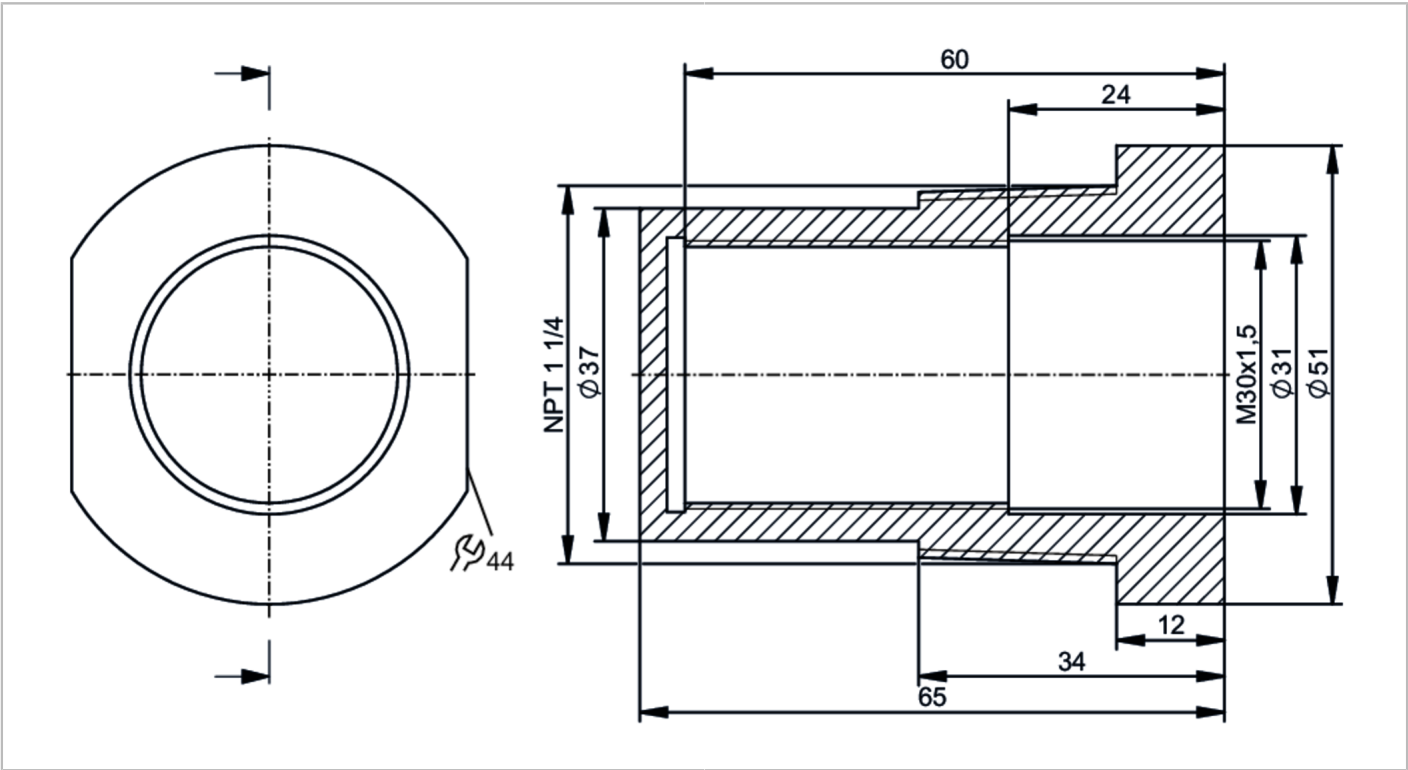




Mounting adapter for capacitive sensors

MOUNTING ADAPTER M30 PTFE



Application	
Design	for types M30
Mechanical data	
Weight [g]	91.05
Dimensions [mm]	1 1/4" NPT / L = 60
Thread designation	1 1/4" NPT
Materials	PTFE
Sensor connection	threaded connection M30 x 1,5 internal thread
Process connection	1 1/4" NPT
Remarks	
Pack quantity	1 pcs.