



MEMS mass flow sensors

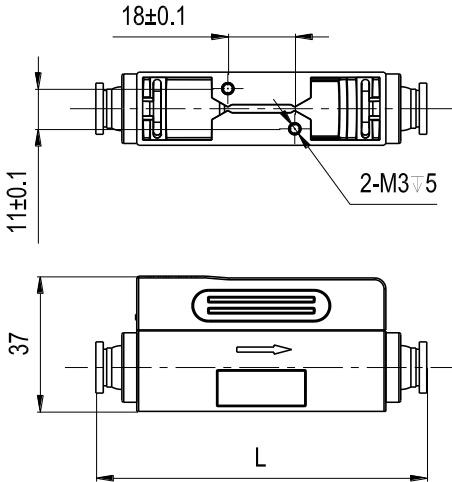
With Thermal-D sensing technology

FS4308 Series

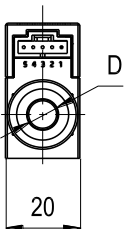
FS4308 series mass flow sensors are an upgrade of FS4000 series with Siargo's *Thermal-D* mass flow sensing technology. A proprietary flow conditioning is implemented that allows the ultimate flexibility in connector, even without a straight pipe at both inlet and outlet. It can be readily applied for a variety of applications including medical equipment such as anesthesia, instrumentation, process control, welding gas and gas mixer. The connector can be adjusted for one-touch, compressed fitting, and others for a particular application.

FS4308 series can measure a mass flow of up to 1000 SLPM. The standard electrical switching options are also incorporated, and **the products are fully RoHS and REACH compatible.**

Dimensions



	L	D
8mm One-touch	89.0 ± 2.0	$\varnothing 8.0$
6mm One-touch	85.0 ± 2.0	$\varnothing 6.0$
4mm One-touch	83.0 ± 2.0	$\varnothing 4.0$



Siargo Ltd.
 Santa Clara, California
www.Siargo.com
 408.969.0368
info@Siargo.com



Specifications

Range	0~2, 3, 4, 5	0~10, 20	0~30, 40, 50	SLPM
Accuracy*	$\pm(1.5+0.15FS)$			%
Repeatability	0.25			%
Turn-down ratio	100:1			
Gas temperature	-10 ~ +55			°C
Gas temperature accuracy	± 2.5			°C
Response time	10			msec
Power supply	8 ~ 24 (50mA)			Vdc
Output	Linear: 1.0 ~ 5.0 Vdc / Digital: RS485 / I ² C			
Maximum pressure	0.8			MPa
Working temperature	-10 ~ +55			°C
Humidity	<95 (no condensation)			%RH
Mechanical connection	BSPT 1/4" or 4mm / 6mm / 8mm One-touch			
Pinout	5 pins, AMPMODU MTE, or compatible			
Calibration	Air @ 20°C, 101.325 kPa			
Max. overflow	30	100	200	SLPM
Max. flow change	4	15	30	SLPM/sec
Weight	40 (with BSPT)			g
Compatibility	RoHS, REACH, CE			

Note: Parameters specified at the calibration conditions.

Product selection

FS4308 - ☐ - ☐ - ☐ - ☐

Gas: **A** – air, N₂, O₂, and Ar; **B** – N₂O; **C** – CO₂.

For other gases, please contact the manufacturer.

Output: **B** – RS485; **C** – RS232; **E** – I²C; **V** – analog 1.0 ~ 5.0 Vdc.

Option: **V**, **BV**, **CV** or **EV**.

Connector: **R** – BSPT 1/4"; **O4/O6/O8** – one touch; **X** – customized.

Full scale flow rate: **2, 3, 4, 5, 10, 20, 30, 40, 50**.