

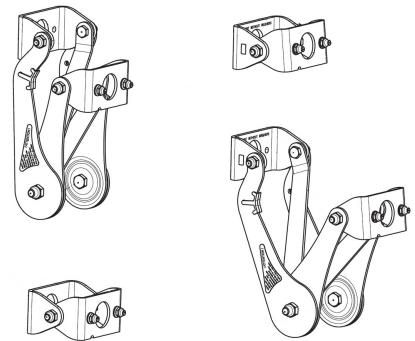
## Downtilt Kit 85010009

### Description

---

Mounting Hardware for Special Communication Antennas:  
Standard Downtilt Kit for Panel Antennas  
(Wind Load Category "H")

Special downtilt kit for Panel antennas with a higher wind load.



### Technical Data

---

#### Mechanical Data

Weight 4.4 kg

Preferred range of use:

- Panel antennas with a higher wind load
- Panel antennas with attached mounting plates
- Downtilt kit without scale for universal use

Material: Hot-dip galvanized steel

Screws: Hot-dip galvanized steel / Stainless steel

Nuts: Stainless steel

Attention: The downtilt kit is not to be used together with azimuth kits or offsets.

#### Environmental Data

#### Related Documents

Security instruction DOC-0000278984

Downtilt Kit  
85010009

Recommended mast clamps:

Type No.	Description	Mast diameter mm   inches	Weight approx. kg   lb	Units per antenna
738546	1 clamp	42-115   1.7-4.5	1.1   2.4	2
85010002	1 clamp	110-220   4.3-8.7	2.7   6.0	2
85010003	1 clamp	210-380   8.3-14.9	4.8   10.6	2

Recommended torque for bolted connections:

Screw size	Torque
M8	Nm 20
M10	Nm 50
M12	Nm 85

Maximum acceptable load:

Frontal wind load	N   lbf	< 5000   1124
Lateral wind load	N   lbf	< 1300   292

Instructions to adjust the required downtilt angle are given in the antenna datasheet or on the rearside of the antenna.

Mounting this downtilt kit enlarges the spacing between mast and antenna by a minimum of 100 mm | 3.9 inches.

Use the downtilt kit together with the clamps as described in the antenna datasheet.

The downtilt kit can also be used for uptilting the antenna.

