

Part No. 1005193

UWB PCB Antenna with SMA Connector

6.0 – 8.5 GHz



KYOCERA AVX's 1005193 is a versatile off-board UWB PCB antenna optimized for applications spanning 6.0 – 8.5 GHz where off-board implementation is advantageous and necessary. The 1005193 antenna incorporates a rigid mounting structure through an SMA connection allowing for ease of assembly to any device.

UWB PCB Embedded Antenna

6000 – 8500 MHz

KEY BENEFITS

Stay-in-Tune

Ethertronics antenna technology provides superior RF field containment, resulting in less interaction with surrounding components.

Quicker Time-to-Market

By optimizing antenna size, performance and emissions, customer and regulatory specifications are more easily met.

Reliability

Products are the latest RoHS, WEEE version compliant

APPLICATIONS

- Embedded design
- Gateway, Access Point
- Handheld
- Telematics
- Tracking
- IoT, Industrial
- devices
- Smart Homes
- Agriculture

Electrical Specifications

Typical Performance using antenna with SMA connector in Free-space.

Frequency	6.0 – 8.5 GHz
Peak Gain	6.0 dBi
Average Efficiency	80%
VSWR Match	2.0 :1 max
Feed Point Impedance	50 ohms unbalanced
Polarization	Linear
Operation Temperature (°C)	-40 to +85
Power Handling	10 Watt

Mechanical Specifications & Ordering Part Number

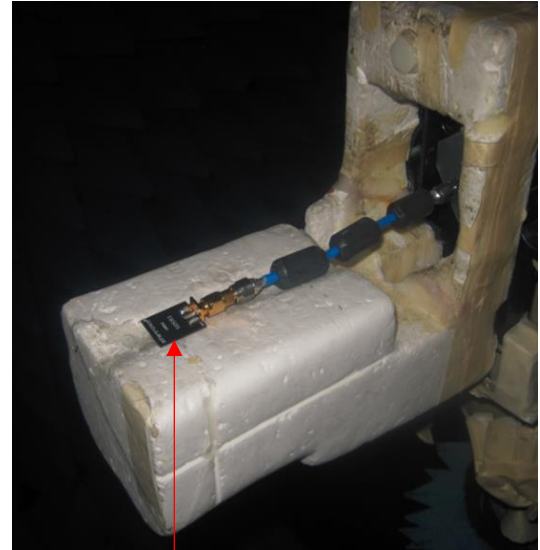
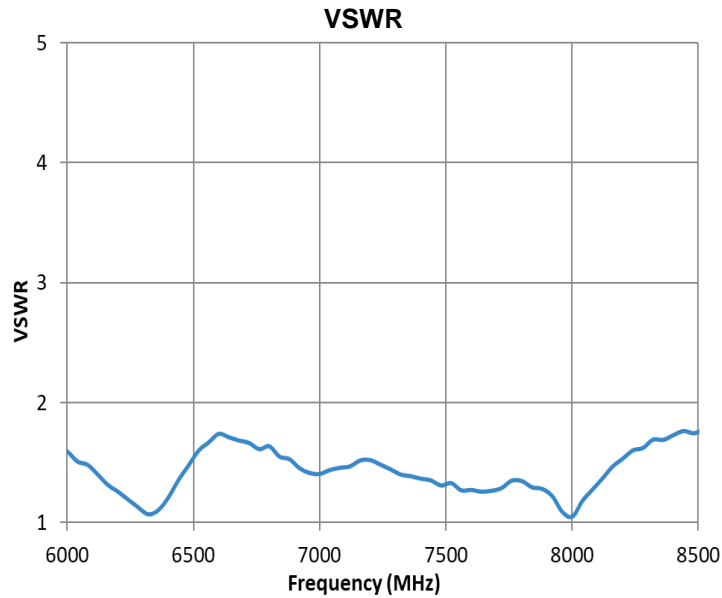
Ordering Part #	1005193-B02
Dimensions (mm)	18.6 x 20.6 x 0.8
Weight (grams)	2.8
Connector	SMA Connector JACK (Female)
Mounting	Screw Mount
Storage Temperature (°C)	-40 to +85
Packaging	PE bags

*Additional variations available with different connectors.

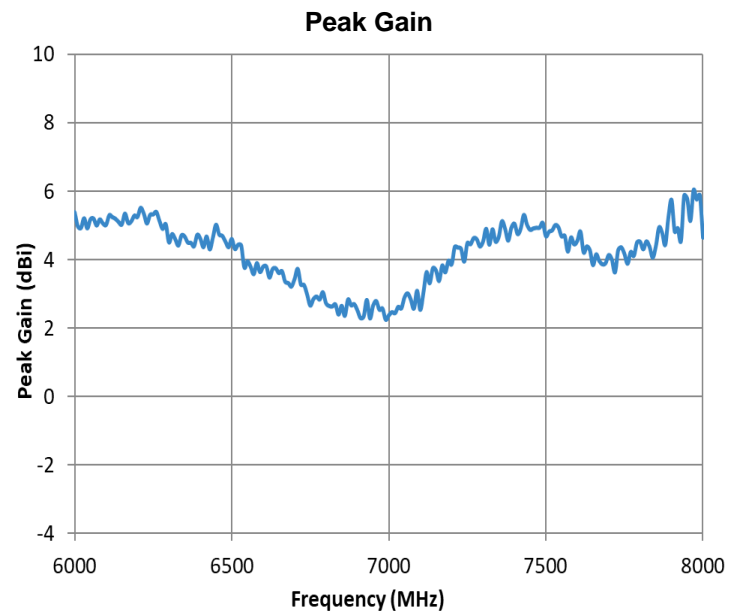
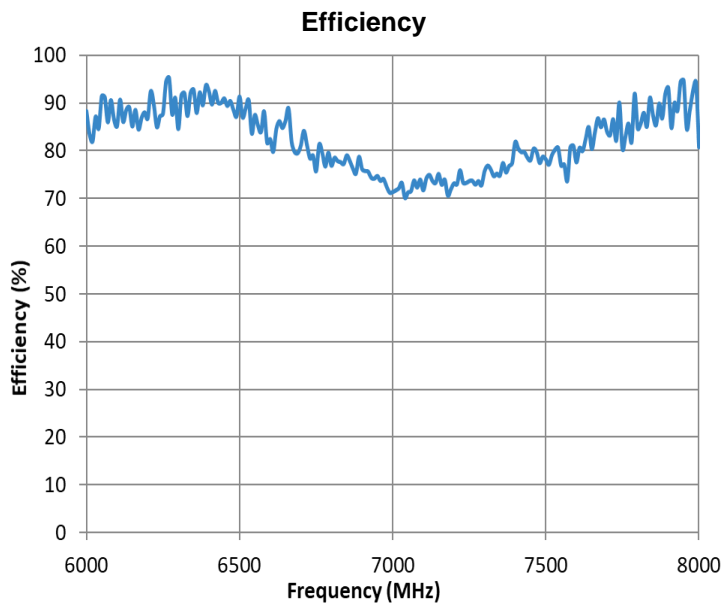
UWB PCB antenna with SMA connector Specifications
 KYOCERA AVX produces a wide variety of standard and custom antennas to meet user needs.

Typical VSWR, Efficiency and Peak Gain plots

Typical Performance using antenna with SMA connector in Free-space.



1005193



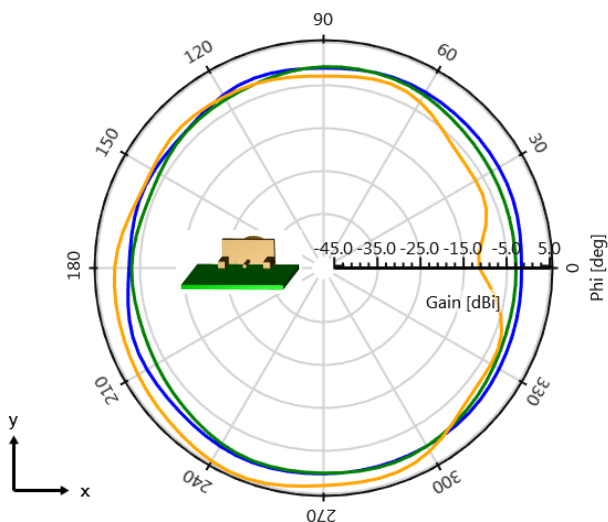
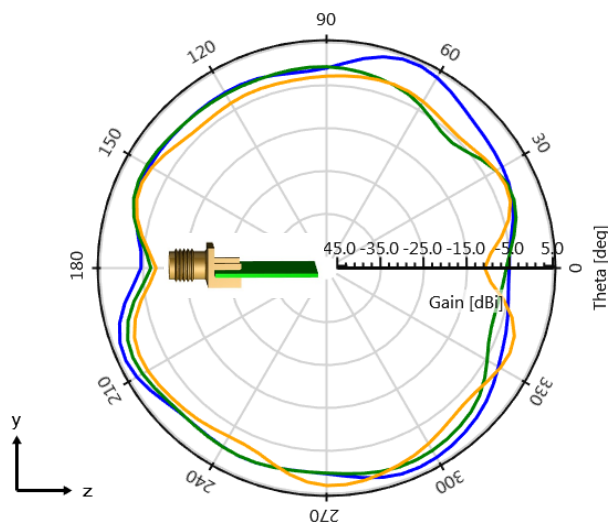
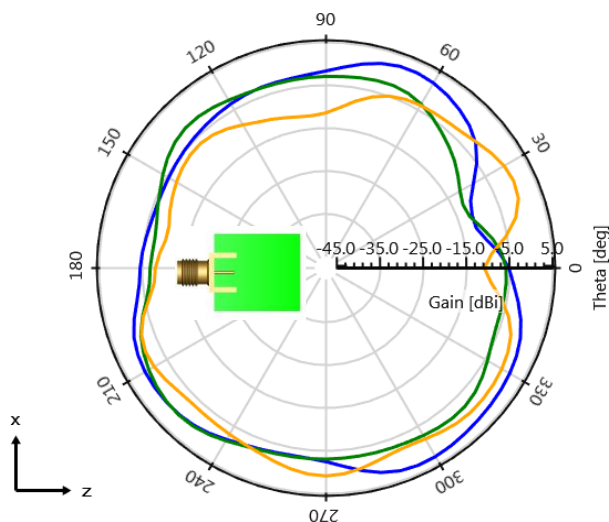
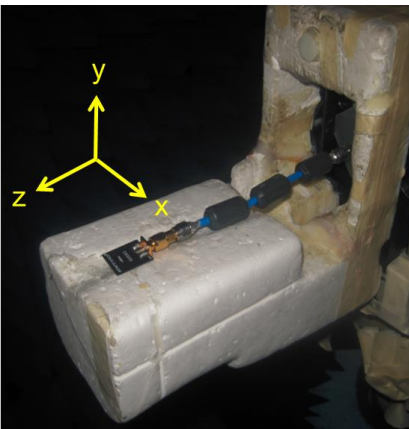
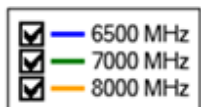
UWB PCB antenna with SMA connector Specifications

KYOCERA AVX produces a wide variety of standard and custom antennas to meet user needs.

Radiation Patterns Plots

Typical Performance using antenna with SMA connector in Free-space.

Typical Performance @ 6500 MHz, 7000 MHz, 8000 MHz



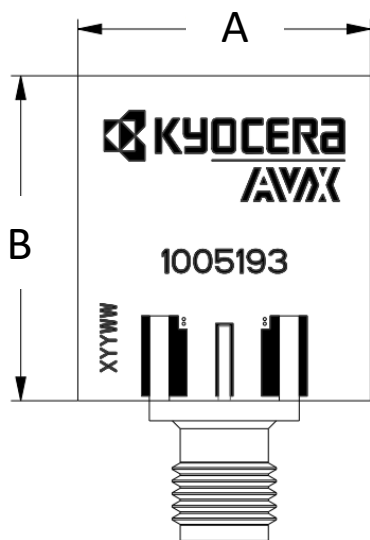
UWB PCB antenna with SMA connector Specifications
KYOCERA AVX produces a wide variety of standard and custom antennas to meet user needs.

Mechanical Dimensions

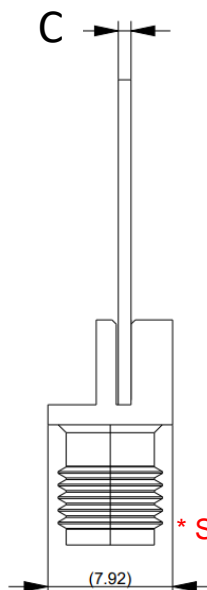
Typical antenna dimensions (mm)

Part Number	A (mm)	B (mm)	C (mm)	D (mm)	Connector Type
1005193-A01	18.6 ± 0.2	20.6 ± 0.2	0.8	33.5	SMA Male
1005193-B02	18.6 ± 0.2	20.6 ± 0.2	0.8	29.5	SMA Female

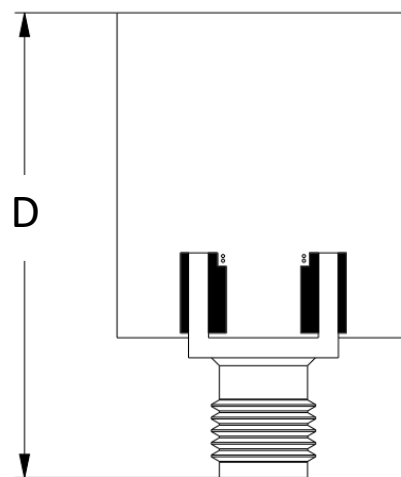
*Additional variations available with different connectors.



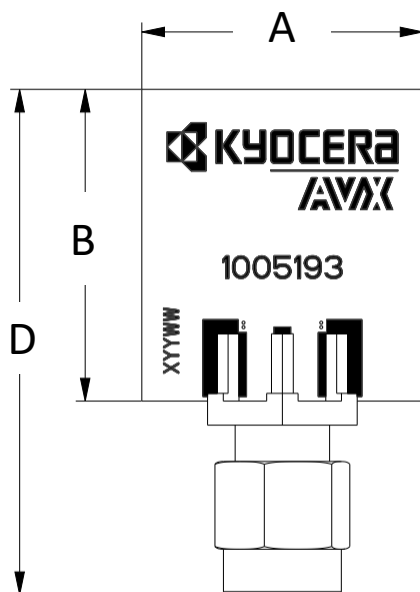
FRONT VIEW



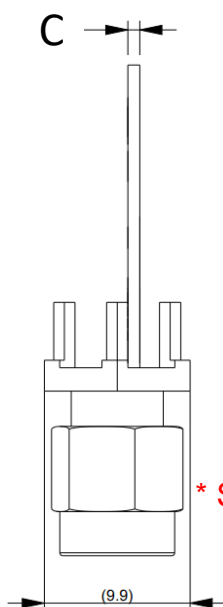
SIDE VIEW



BACK VIEW



FRONT VIEW



SIDE VIEW