

200 to 2600 MHz SMA GaN Power Amplifier, 10W, High VHF Through S Bands, 28V, 40% Efficiency and Class AB

The FMAM5084 is a Class AB high power amplifier that operates in high VHF through S bands from 200 MHz to 2600 MHz and generates 10 Watts (typ) of CW RF power. The module utilizes the latest Gallium Nitride (GaN) semiconductor technology with 40% power added efficiency. The amplifier package design features an extremely small form factor of just 2.84in³ that's ideal for size, weight, and power (SWaP) constrained applications used in broadband RF telemetry, tactical communication, electronic warfare, and unmanned aircraft systems, as well as software defined radios. Impressive typical performance includes 46 dB of linear gain, 2:0:1 VSWR, +44 dBm third order intercept point, and harmonic suppression of -15 dBc. Operating voltage is +28 Vdc with 1.4A of DC current. Additional features include overvoltage protection, reverse voltage protection, and logic on/off control. The rugged Mil-Grade assembly supports female SMA RF input/output connectors and a micro-D 9 pin socket command control connector with an accessory cable assembly included. The operating baseplate temperature range is -40°C to +85°C and the unit is guaranteed to withstand up to 95% relative humidity, altitude levels up to 30,000 ft, and random vibration and shock profiles (see chart below). Fairview Microwave also offers an accessory Harmonic filter option, model FMHFL0000 that can be used at the output of the FMAM5084 power amplifier. This lowpass RF filter has low insertion loss with power handling up to 50W and specifically designed to reduce harmonics at the output of transmitters operating at up through L & S Bands and offers rejection levels of greater than 25 dB from 3.25 GHz to 5 GHz. The filter is offered in a miniature SMA connectorized package.

Electrical Specifications

(TA = +25°C, DC Voltage = 28Volts , DC Current = 1.4A)

Description	Min	Typ	Max	Unit
Frequency Range	0.2		2.6	GHz
Small Signal Gain		46		dB
Gain Flatness		±4		dB
Input Power (CW)		+0		dBm
Psat	7	10		Watts
Efficiency (PAE)		40		%
P1dB		+33		dBm
Output 3rd Order Intercept Point		+44		dBm
Output Mismatch			10:1	
2nd Harmonics		-10		dBc
3rd Harmonics		-15		dBc
Impedance (Input)		50		Ohms
Impedance (Output)		50		Ohms
Input VSWR		2:1		
Operating DC Voltage	11	28	32	Volts
Operating DC Current		1.4	1.8	A
Quiescent Current Bias		400		mA
Operating Temperature Range	-40		+85	°C



Features:

- 10W GaN High Power Amplifier
- High VHF through S Band Class AB Design
- Frequency Range: 200 MHz to 2600 MHz
- 46 dB linear Gain
- VSWR: 2.0:1
- +44 dBm IP3
- PAE: 40%
- Extremely Small Form Factor Rugged Mil-Grade Package
- 50 Ohm Design
- Female SMA RF Connectors
- +28Vdc @0.14A DC current
- -40°C to +85°C Operating Baseplate Temperature
- Output Harmonic Filter Accessory Option

Applications:

- Broadband RF Telemetry
- RF Communications Systems
- Electronic Warfare - Airborne Electronic Attack
- Unmanned Aircraft Systems (UAS)
- Unmanned Ground Vehicles (UGV), Software Defined Radios
- Data Links
- Transmitters
- Test & Measurement
- Telecom Infrastructure

Fairview Microwave
301 Leora Ln., Suite 100
Lewisville, TX 75056
Tel: 1-800-715-4396 / (972) 649-6678
Fax: (972) 649-6689
www.fairviewmicrowave.com
sales@fairviewmicrowave.com

Performance by Frequency

Description	F1	F2	F3	Units
Frequency Condition	200	1400	2600	MHz
Output Power @ 1dB Compression, Typ	26	25	33	dBm
Small Signal Gain, Typ (@-30dBm input)	46	46	43	dB
Third Order Intercept Point	42	44	41	dBm

Absolute Maximum Rating

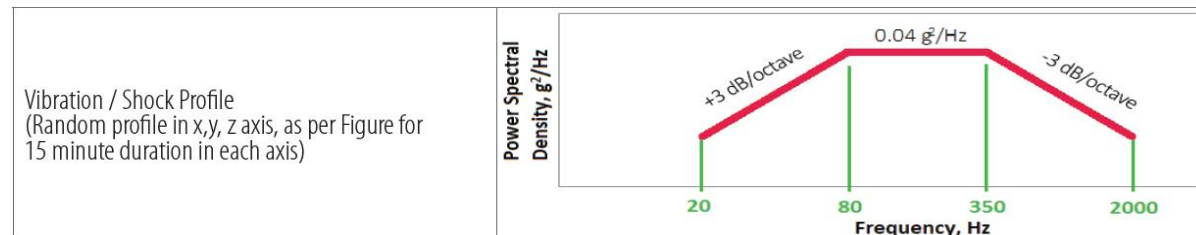
Parameter	Rating	Unit
Max Device Voltage	32	V
Max Device Current	3.0	A
Max RF Input Power, $Z_L = 50 \Omega$	10	dBm
Max Operating Temperature (ambient)	60	°C
Max Operating Temperature (baseplate)	85	°C
Max Storage Temperature	85	°C



ESD Sensitive Material,
 Transport material in
 Approved ESD bags. Handle
 only in approved
 ESD Workstation.

Mechanical Specifications
Size

Length	2.34 in [59.44 mm]
Width	1.96 in [49.78 mm]
Height	0.62 in [15.75 mm]
Weight	0.2 lbs [90.72 g]
Input Connector	SMA Female
Output Connector	SMA Female
Bias Connector	9-Pin Micro-D Socket

Environmental Specifications


Temperature	
Operating Range	-40 to +85 deg C
Storage Range	-55 to +85 deg C
Humidity	95% Non-Condensing
Altitude	MIL-STD-810F Method 5004

Compliance Certifications (see [product page](#) for current document)

Plotted and Other Data

- Notes:
- Values at 25 °C, sea level



Amplifier Power-up Precautions

- 1.) Confirm that proper ESD precautions and controls are always in place before handling any Amplifier module.
- 2.) Confirm adequate thermal management is in place to effectively dissipate heat away from the Amplifier package. The Amplifier operational baseplate temperature must be within the operational temperature range stated in the Amplifier datasheet. Depending on the design and thermal requirements, using a heatsink with cooling fan is always recommended for safe reliable operation. A heat sink without a cooling fan may also be used. Damage caused from overheating will void the warranty.
- 3.) Confirm adequate system grounding is established. The DC power supply and Amplifier must have a common ground in order to operate properly.
- 4.) Power Amplifiers may require additional DC Current when initially powered-up. Depending on the design, the input current draw could range from an additional 10% to 100% above the maximum rated DC current of the Amplifier. This varies based on product part number.
- 5.) Confirm the DC power supply, if limited, is set to allow for additional start-up current that's rated for the Power Amplifier.
- 6.) Confirm the system is designed and calibrated for 50 ohms. Any impedance mismatch may cause performance issues.
- 7.) Perform a CALIBRATION (if required) with the loads before connecting the Amplifier to the Network Analyzer to ensure proper performance.
- 8.) Use a fixed attenuator between the signal source and input port of the Amplifier to optimize the input VSWR match.
- 9.) Confirm the input power level at the input port of the amplifier does not exceed the maximum rated limit for input power (as stated in the Amplifier datasheet).
 P_{in} for Small Signal Gain = P1dB-SSG-10 dB
 P_{in} for P1dB = P1dB-SSG+1 dB
- 10.) Confirm the Network Analyzer is always connected to the Amplifier first before DC power is applied to the Amplifier.
- 11.) As long as the input and output ports of the amplifier are connected to a 50Ohm load and RF signal power is applied, the Amplifier can be powered up with DC voltage.
- 12.) Confirm the Amplifier output load is matched for a 50 Ohm impedance and will not exceed the maximum rated VSWR or Return Loss limit for the Amplifier. Exceeding the maximum rated VSWR or Return Loss limit will result in reflected signal power that could damage the Amplifier and void the warranty.
- 13.) **Power Amplifier connected to an Antenna for signal transmission** - It's strongly recommended to use a high power fixed attenuator pad or an Isolator between the output port of the Amplifier and input port to the antenna. Any reflected signal power due to impedance mismatch will likely damage the Amplifier and void the warranty.
- 14.) The attenuator or isolator used at the output port of the Amplifier must be rated to handle the output power level and operational frequency band of the amplifier.

POWER BACK-OFF MODE

This Amplifier is designed to allow the user to reduce, or "back-off", the output power in support of linear waveform operation or to trade off output power in exchange for lower power consumption. The amount of power back-off is assuming a 0 dBm drive level to PA module.

Pins 7 & 9 on the CTRL/PWR interface connector are designated to allow such operation. Table 1 depicts the pin configurations to achieve low, medium, and high back-off settings, where "N/C" is an indication to leave the pin floating (i.e. not connected) since the pin is tied high internally, and where "GND" means grounding the pin. Due to the broadband nature of the unit, the amount of attenuation is an approximation for each respective setting as shown in Table 1, dependant on operational frequency and other factors, including unit-to-unit power variation.

Table 1: Power Back-off Settings

Attenuation Settings	Bit 1	Bit 2
Full power / No attenuation	N/C	N/C
-6 dB (low)	GND	GND
-9 dB (med)	GND	N/C
-12 dB (high)	N/C	GND

RF ENABLE

This signal is the logic control input that designates whether the unit is in transmit or standby mode. The RF Enable line is pulled high internally placing the PA module in *standby* mode. If the pin is left floating (i.e. not connected), the unit will default to *standby* mode.

Grounding the pin (i.e. a voltage below +0.2 VDC) places the unit in *transmit* mode. The user can either connect the RF Enable line to pins 1 & 2 on the CTRL/PWR interface connector, or an open drain logic line capable of sinking 500 μ A to place the unit in *transmit* mode.

TEMP FLAG

This Signal is a logic level output to indicate an over-temperature condition. A logic high (+5 VDC) indicates normal operation, while a logic low (0 VDC) indicates an over-temperature condition. This amplifier incorporates internal logic circuitry that turns off the DC bias to the RF transistors.

CAUTION: The amplifier should be shut down and allowed to cool off when the over-temperature flag is set to high to avoid damage to the module.

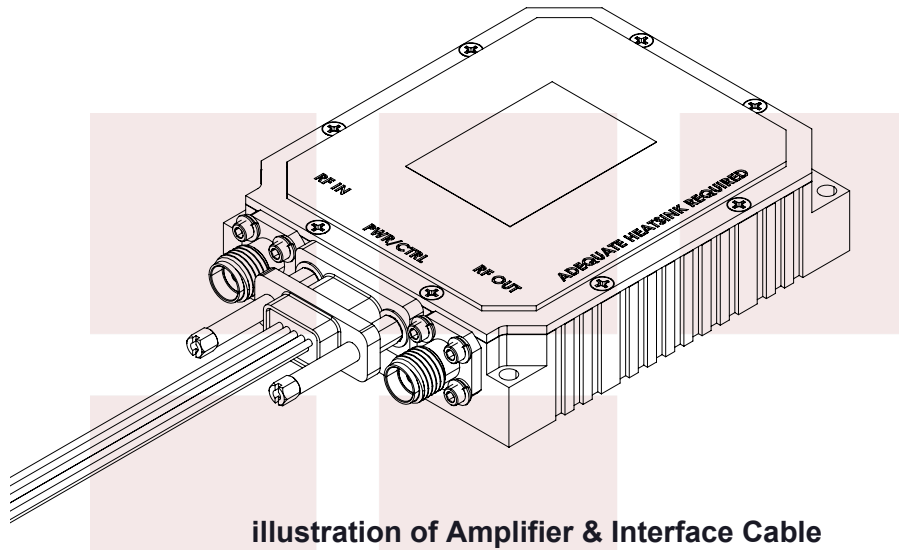
TRANSMIT TURN-ON TIME

This amplifier is at full power approximately 30 μ s after the RF Enable line goes low (ground). Therefore, transmit data can be applied to the input after 30 μ s without loss of data.

CAUTION: Do not apply transmit data until the PA module is at full power. This will prevent loss of data at the beginning of a message

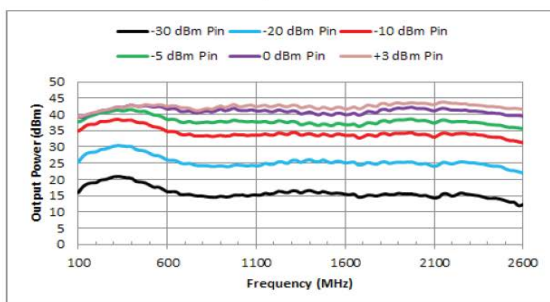
GROUND

The signal and power grounds are tied together in the PA module.

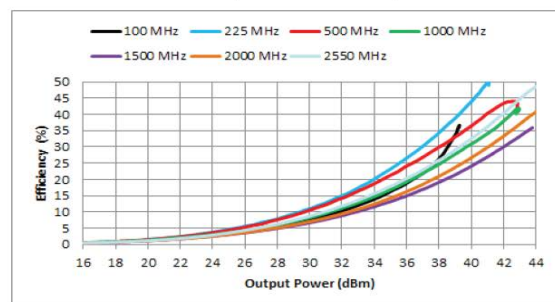


Typical Performance Data

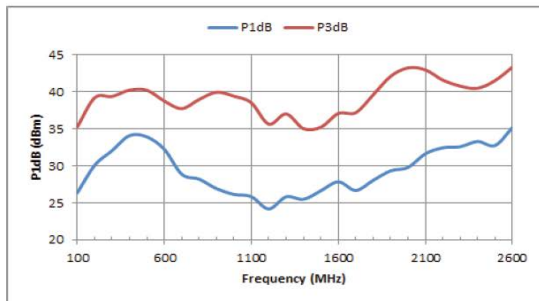
RF Output Power



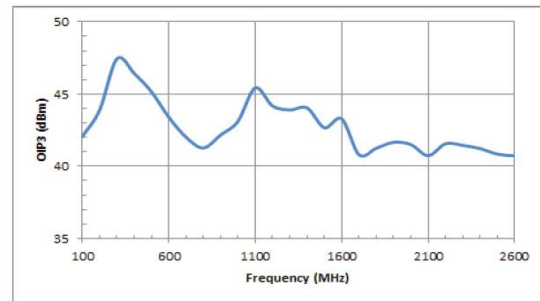
Efficiency vs Power Output



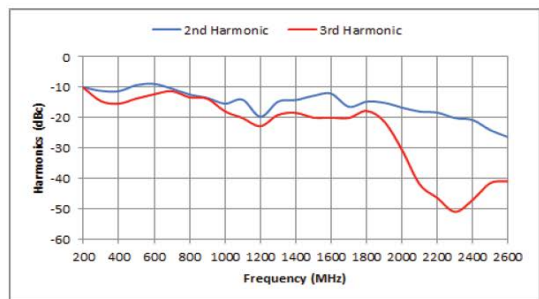
P1dB & P3dB



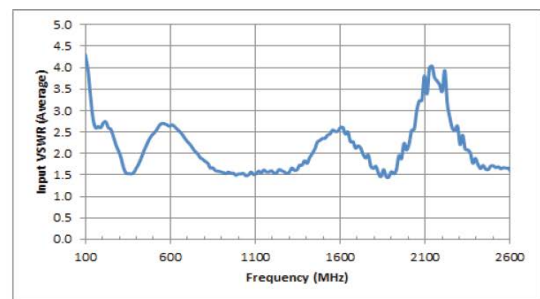
OIP3



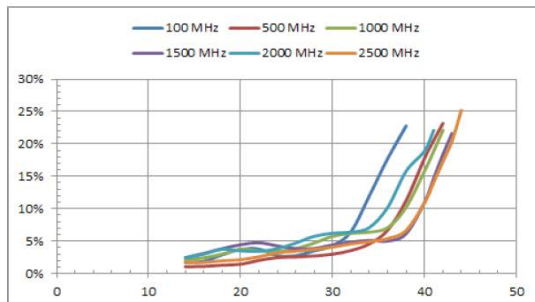
Harmonics (@ Psat)



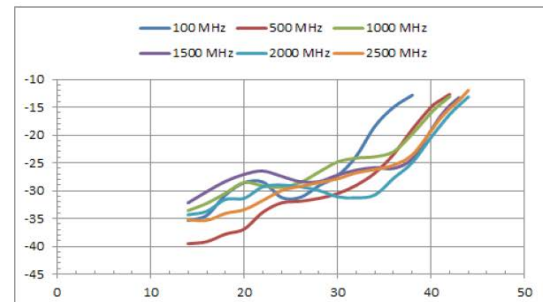
VSWR



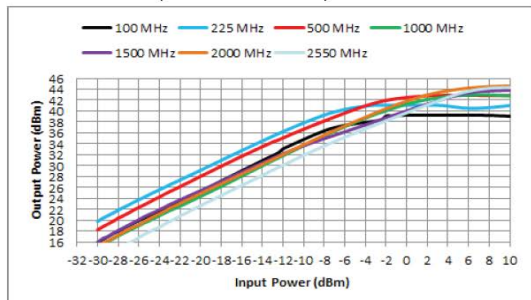
Error Vector Magnitude (%) [w/ OFDM Waveform]



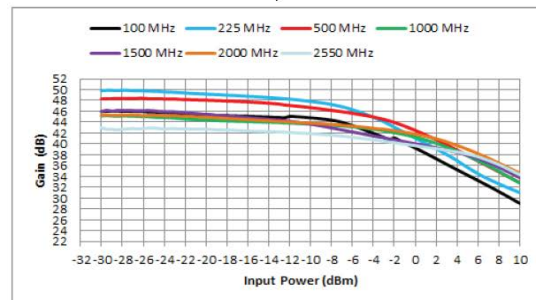
Error Vector Magnitude (dB) [w/ OFDM Waveform]



Output Power vs. Input Power



Gain vs. Input Power

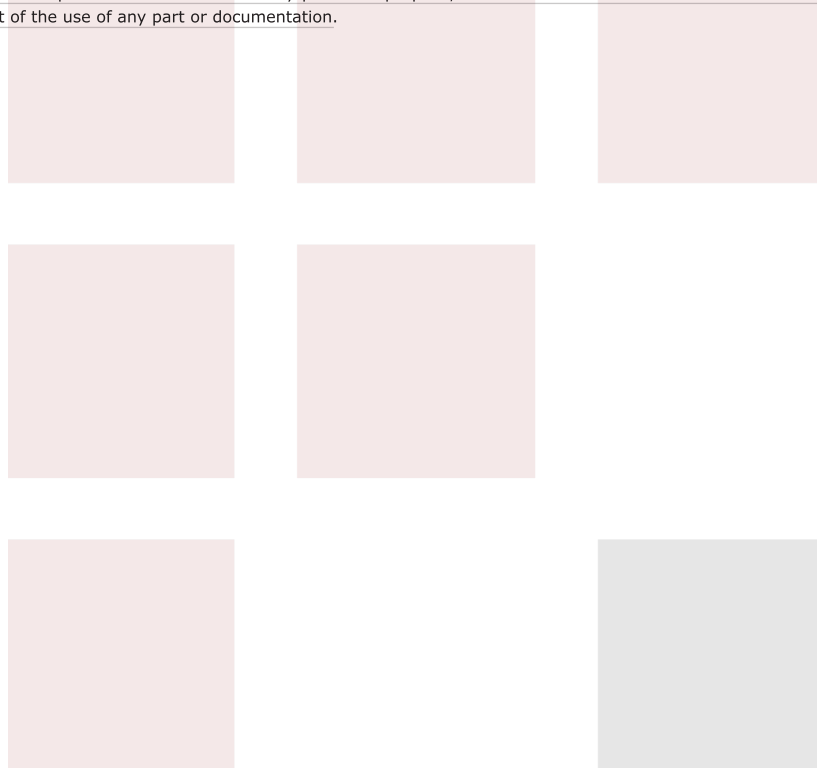


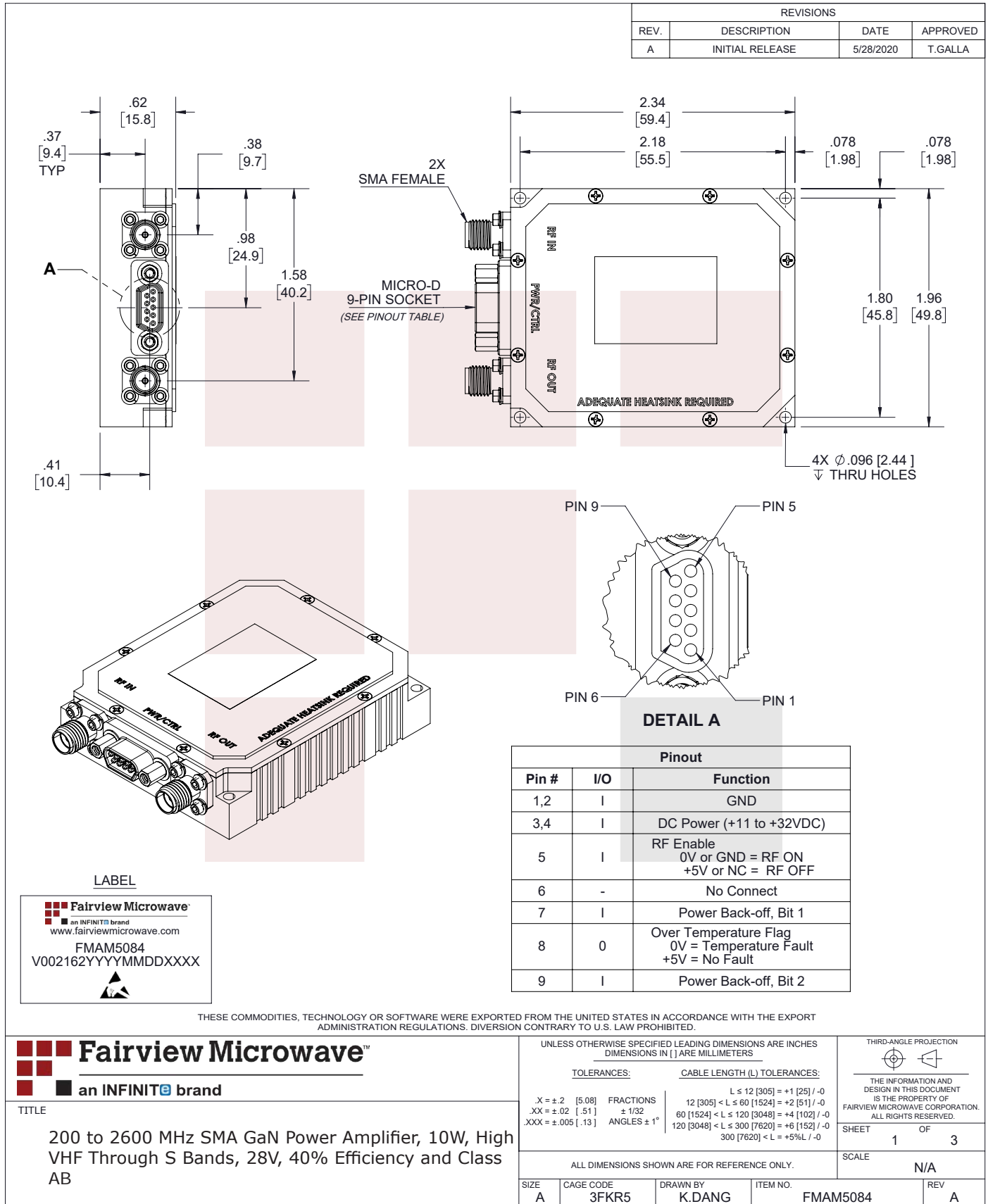
200 to 2600 MHz SMA GaN Power Amplifier, 10W, High VHF Through S Bands, 28V, 40% Efficiency and Class AB from Fairview Microwave is in-stock and available to ship same-day. All of our RF/microwave products are available off-the-shelf from our ISO 9001:2008 certified facilities in Lewisville, Texas. Fairview Microwave is RF on-demand.

For additional information on this product, please click the following link: [200 to 2600 MHz SMA GaN Power Amplifier, 10W, High VHF Through S Bands, 28V, 40% Efficiency and Class AB FMAM5084](#)

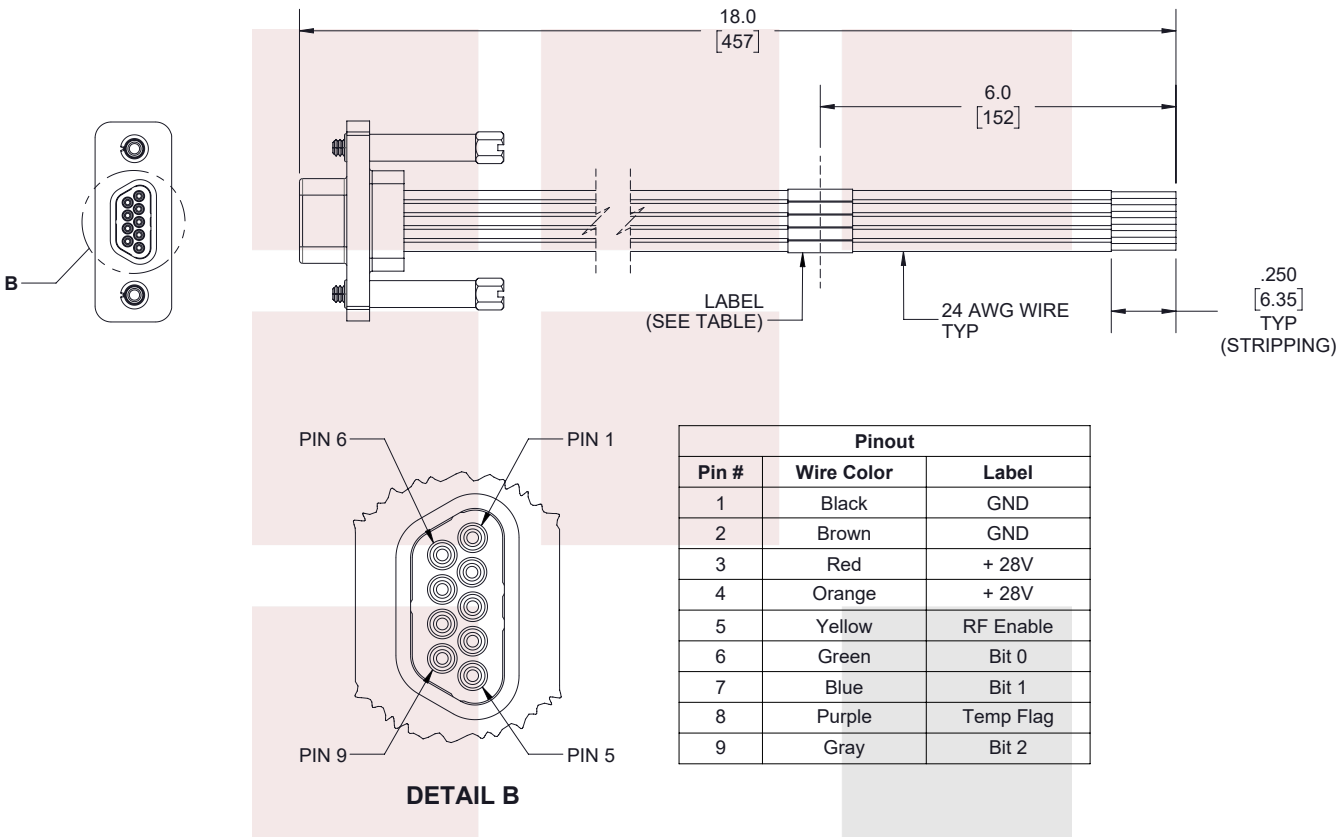
URL: <https://www.fairviewmicrowave.com/46db-medium-power-high-gain-amplifier-10dbm-fmam5084-p.aspx>

The information contained in this document is accurate to the best of our knowledge and representative of the part described herein. It may be necessary to make modifications to the part and/or the documentation of the part, in order to implement improvements. Fairview Microwave reserves the right to make such changes as required. Unless otherwise stated, all specifications are nominal. Fairview Microwave does not make any representation or warranty regarding the suitability of the part described herein for any particular purpose, and Fairview Microwave does not assume any liability arising out of the use of any part or documentation.

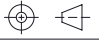




INTERFACE CABLE



THESE COMMODITIES, TECHNOLOGY OR SOFTWARE WERE EXPORTED FROM THE UNITED STATES IN ACCORDANCE WITH THE EXPORT ADMINISTRATION REGULATIONS. DIVERSION CONTRARY TO U.S. LAW PROHIBITED.

<div><div><div></div><div></div><div></div><div></div></div><div><div>Fairview Microwave</div><div>an INFINITE brand</div></div></div>		UNLESS OTHERWISE SPECIFIED LEADING DIMENSIONS ARE INCHES DIMENSIONS IN [] ARE MILLIMETERS		THIRD-ANGLE PROJECTION 	
TITLE 200 to 2600 MHz SMA GaN Power Amplifier, 10W, High VHF Through S Bands, 28V, 40% Efficiency and Class AB		TOLERANCES:		CABLE LENGTH (L) TOLERANCES:	
		.X = ±.2 [5.08] FRACTIONS ± 1/32 .XX = ±.02 [.51] ± 1/32 .XXX = ±.005 [.13] ANGLES ± 1°		L ≤ 12 [305] = +1 [25] / -0 12 [305] < L ≤ 60 [1524] = +2 [51] / -0 60 [1524] < L ≤ 120 [3048] = +4 [102] / -0 120 [3048] < L ≤ 300 [7620] = +6 [152] / -0 300 [7620] < L = +5%L / -0	
		ALL DIMENSIONS SHOWN ARE FOR REFERENCE ONLY.		THE INFORMATION AND DESIGN IN THIS DOCUMENT IS THE PROPERTY OF FAIRVIEW MICROWAVE CORPORATION. ALL RIGHTS RESERVED.	
		SIZE A CAGE CODE 3FKR5 DRAWN BY K.DANG ITEM NO. FMAM5084		SHEET 2 OF 3 SCALE N/A	
				REV A	

T-Rev.D