

SMA Mixer from 5 MHz to 1 GHz with an IF Range from DC to 1 GHz and LO Power of +13 dBm

The FMMX1016 is a Double Balanced Mixer that operates across an RF and LO frequency range from 5 MHz to 1000 MHz with an IF frequency range of DC to 1000 MHz and supports an LO drive level range from +10 to +16 dBm, with +13 dBm nominal. The design utilizes Schottky Ring Quad Diodes with optimized balun structures and exhibits highly linear performance. Exceptional typical performance includes Conversion Loss of 7 dB, RF to LO and LO to IF isolation levels up to 55 dB, and a high input IP3 level of +22 dBm. The 50 ohm hybrid module does not require any external components or matching circuitry. The rugged compact package assembly supports female SMA connectors, operates over a temperature range of -40°C to +85°C, and is designed to meet MIL-STD-202 environmental test conditions for Humidity, Shock, Vibration, and Altitude for high reliability.



Features:

- Broadband Double Balanced Mixer Design
- High Linearity
- LO & RF Frequency Range: 5 MHz to 1000 MHz
- IF Frequency Range: DC to 1000 MHz
- LO Drive Level Range: +10 dBm to +16 dBm
- Schottky Ring Quad Diodes with Optimized Balun Structures
- Conversion Loss: 7 dB typ
- High Port Isolations up to 55 dB typ
- High Input IP3 Level: +22 dBm
- RF Input Up to +9 dBm
- SMA Connectors / Designed to Meet MIL-STD-202 Environmental Test Conditions

Electrical Specifications

Description	Min	Typ	Max	Units
RF Frequency Range	5		1,000	MHz
LO Frequency Range	5		1,000	MHz
IF Frequency Range	DC		1,000	MHz
Impedance		50		Ohms
Conversion Loss		7	9.5	dB
LO to RF Isolation	16	39		dB
LO to IF Isolation	12	30		dB
RF Port VSWR		1.5:1	2.5:1	
IF Port VSWR		1.5:1	2.5:1	
Input at IP3	+19	+22		dBm
RF Input Power			+9	dBm
LO Input Power		+13		dBm

Mechanical Specifications

Weight 0.09 lbs [40.82 g]

Configuration

Design Double Balanced
Package Type Connectorized
RF Connector SMA Female
LO Connector SMA Female
IF Connector SMA Female

Environmental Specifications

Temperature

Operating Range -40 to +85 deg C
Storage Range -55 to +100 deg C

Humidity MIL-STD-202F, Method 103B, Condition B

Applications:

- Electronic Warfare
- Point-to-Point Radios
- Point-to-Multipoint Radios
- VSAT
- Radar
- Space Systems
- Test Instrumentation
- Sensors

Fairview Microwave
301 Leora Ln., Suite 100
Lewisville, TX 75056
Tel: 1-800-715-4396 / (972) 649-6678
Fax: (972) 649-6689
www.fairviewmicrowave.com
sales@fairviewmicrowave.com

Shock
Vibration
Altitude

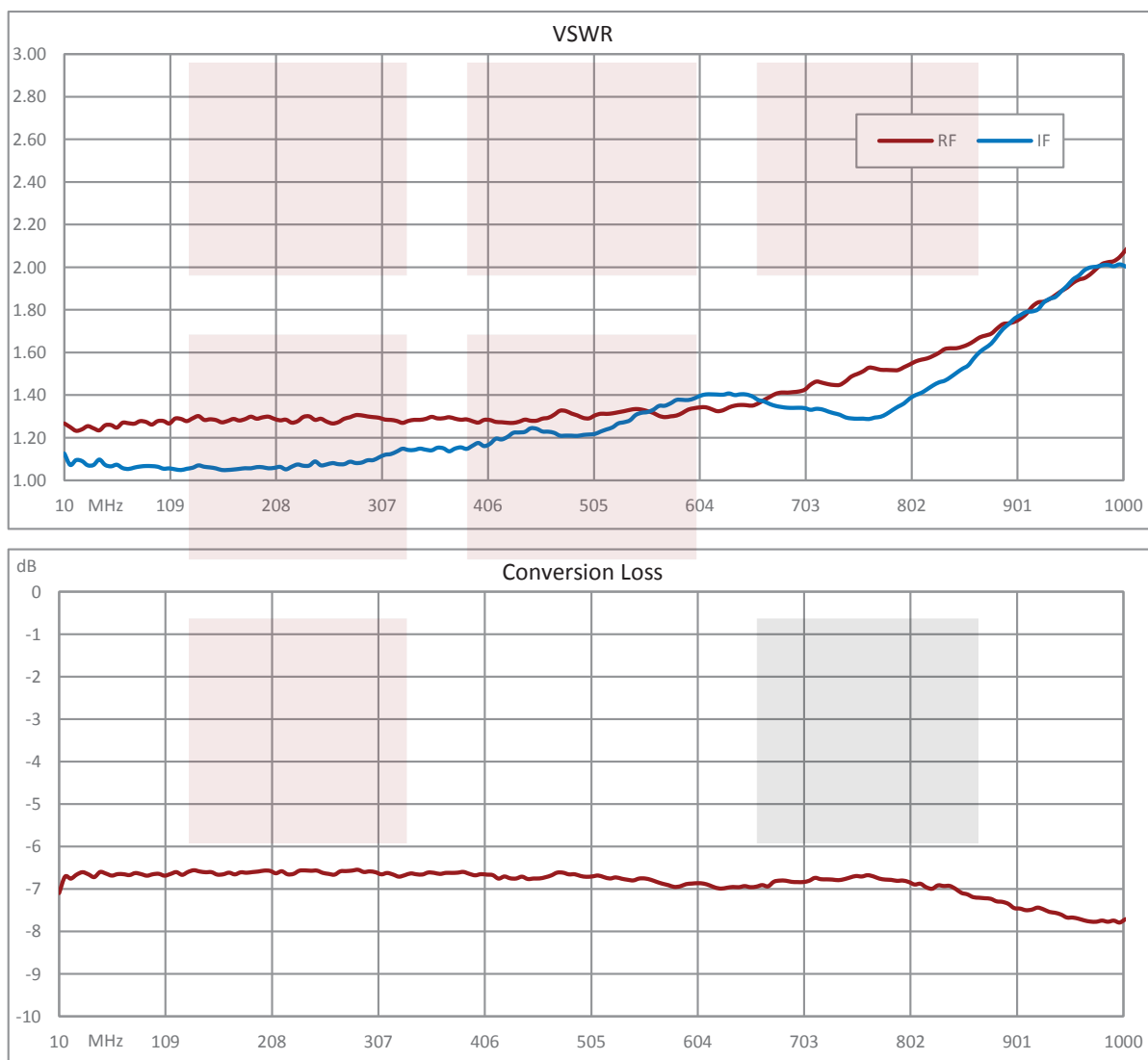
MIL-STD-202F, Method 213B, Condition B
MIL-STD-202F, Method 204D, Condition B
MIL-STD-202F, Method 105C, Condition B

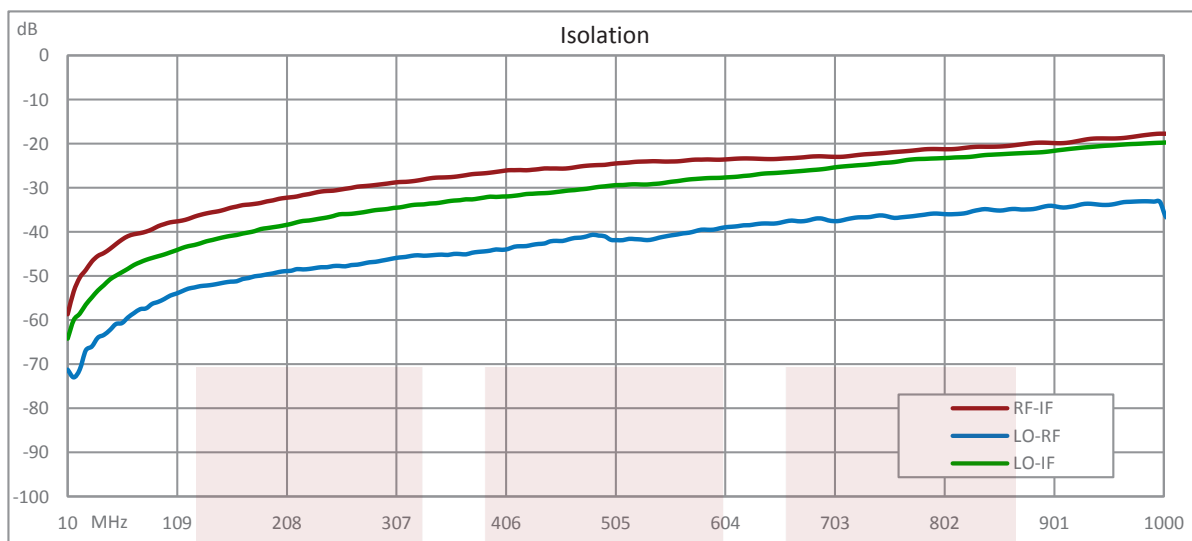
Compliance Certifications (see [product page](#) for current document)

Plotted and Other Data

Notes:

Typical Performance Data



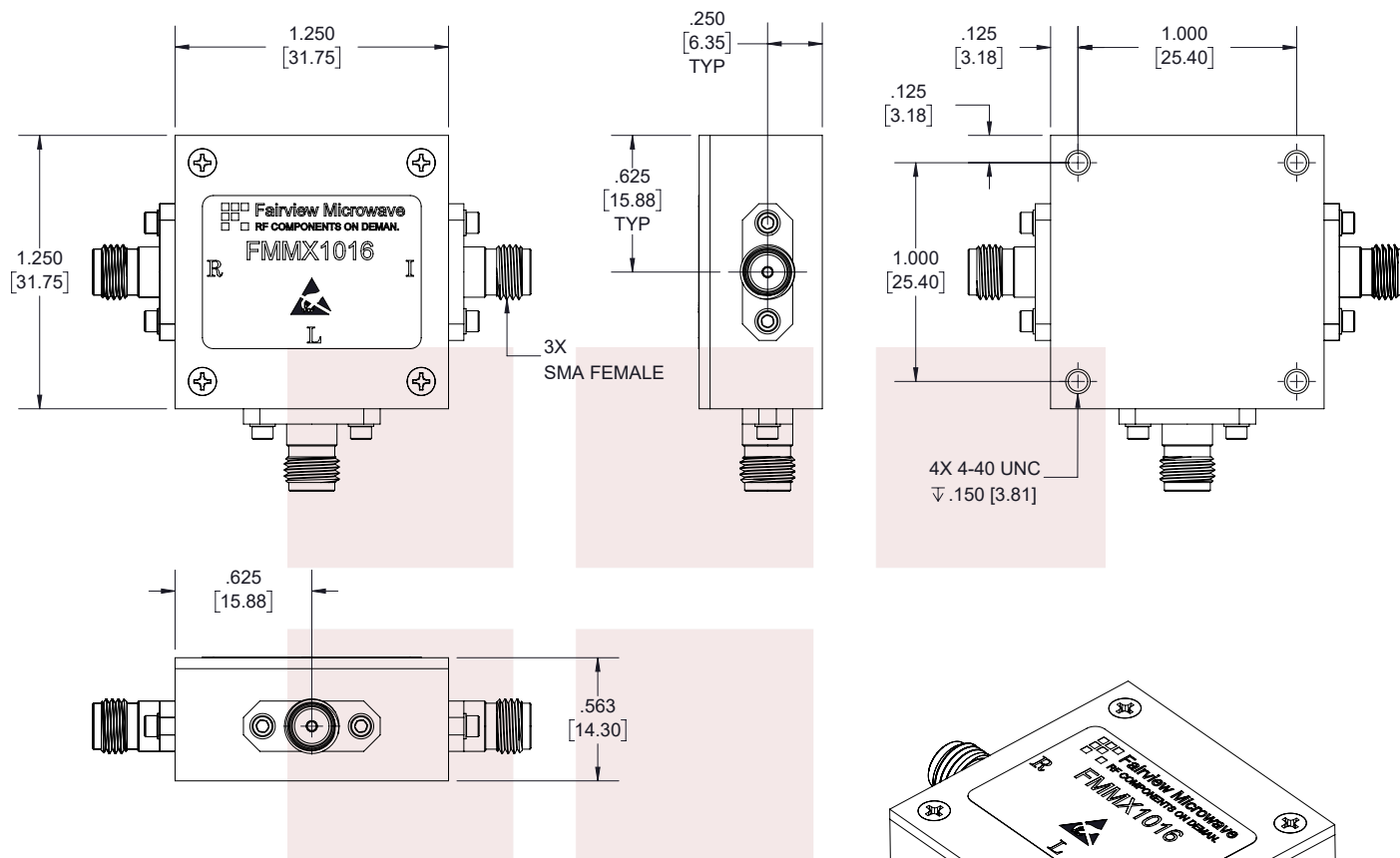


SMA Mixer from 5 MHz to 1 GHz with an IF Range from DC to 1 GHz and LO Power of +13 dBm from Fairview Microwave is in-stock and available to ship same-day. All of our RF/microwave products are available off-the-shelf from our ISO 9001:2008 certified facilities in Allen, Texas. Fairview Microwave is RF on-demand.

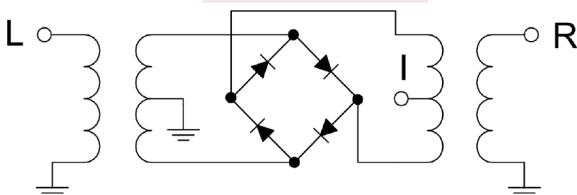
For additional information on this product, please click the following link: [SMA Mixer from 5 MHz to 1 GHz with an IF Range from DC to 1 GHz and LO Power of +13 dBm FMMX1016](https://www.fairviewmicrowave.com/sma-mixer-13-dbm-fmmx1016-p.aspx)

URL: <https://www.fairviewmicrowave.com/sma-mixer-13-dbm-fmmx1016-p.aspx>

The information contained in this document is accurate to the best of our knowledge and representative of the part described herein. It may be necessary to make modifications to the part and/or the documentation of the part, in order to implement improvements. Fairview Microwave reserves the right to make such changes as required. Unless otherwise stated, all specifications are nominal. Fairview Microwave does not make any representation or warranty regarding the suitability of the part described herein for any particular purpose, and Fairview Microwave does not assume any liability arising out of the use of any part or documentation.



SCHEMATIC



STANDARD TOLERANCES

.X ±0.2
.XX ±0.01
.XXX ±0.005

*STANDARD TOLERANCES APPLY
ONLY TO DIMENSIONS IN INCHES

NOTES:
1. UNLESS OTHERWISE SPECIFIED ALL DIMENSIONS ARE NOMINAL.
2. ALL SPECIFICATIONS ARE SUBJECT TO CHANGE WITHOUT NOTICE AT ANY TIME.
3. DIMENSIONS ARE IN INCHES [mm].

TITLE

SMA Mixer from 5 MHz to 1 GHz with an IF Range
from DC to 1 GHz and LO Power of +13 dBm

DWG NO

FMMX1016

CAGE CODE

3FKR5

CAD FILE

04/26/18

SHEET

1 OF 1

SCALE N/A

SIZE A

7361